



**PARTS LIST FOR 1290L AIR SANDER (6000RPM),
1291L AIR GRINDER (6000RPM) & 1292L AIR POLISHER (3000RPM)
(INCLUDES REMOTE EXHAUST)**

Form Z380A
Date 2011 December 2/A
Page 1 of 1

SERIAL "C"

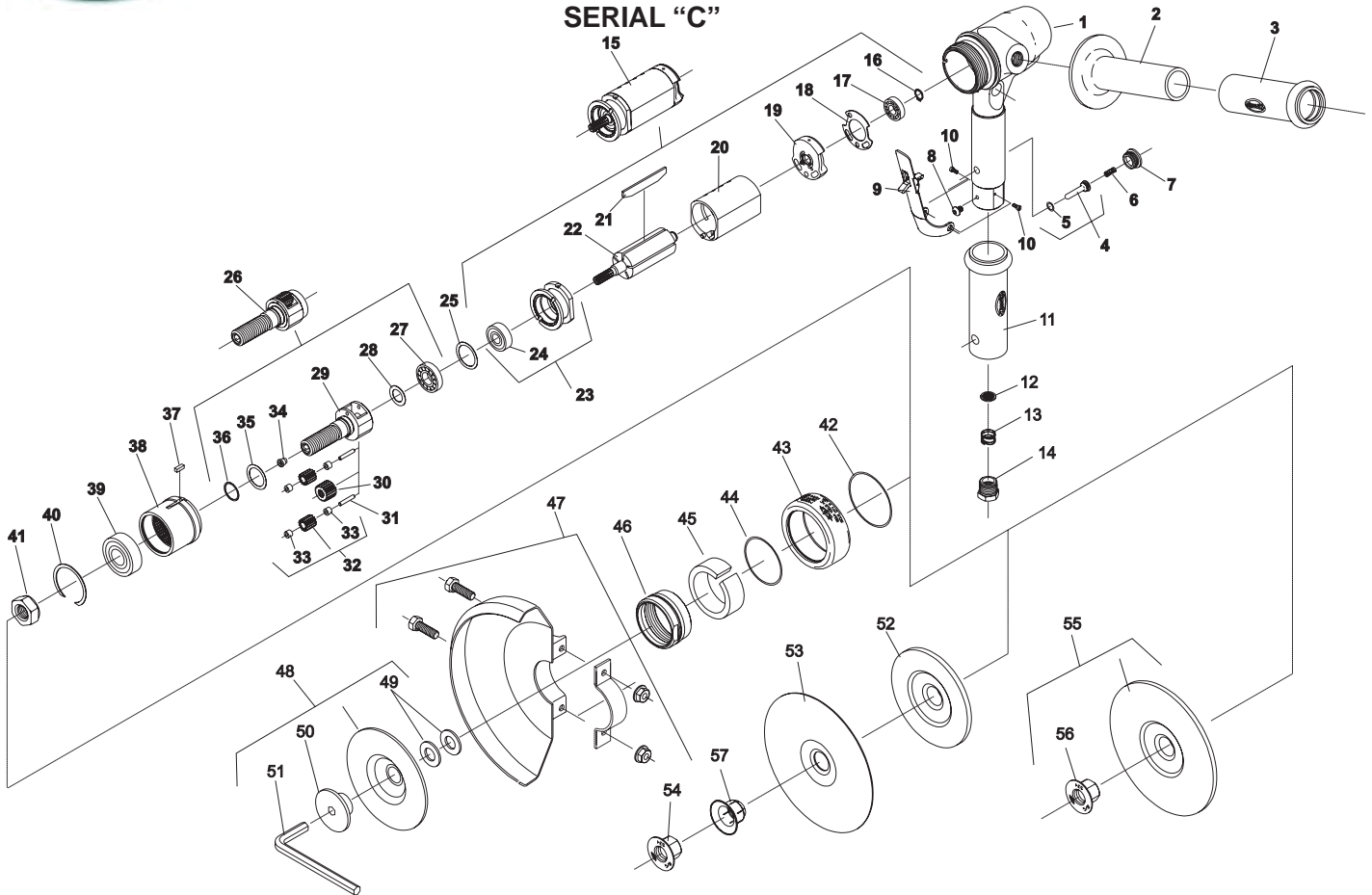


Fig. No.	Part No.	Description
1.	66876	Housing
2.	14171	Auxiliary Handle
3.	66880	Cover
4.	63575	Valve Stem
5.	65289	O-Ring
6.	21211	Spring
7.	66878	Cap
8.	66963	Screw
9.	65669TM	Safety Lever Assembly
10.	06099	Screw (2)*
11.	66880A	Cover
12.	30462	Screen
13.	21417	Spring
14.	44100	Reducing Bushing
15.	43781	Motor Assembly (1290L, 1291L)
	43783	Motor Assembly (1292L)
16.	21534	Retaining Ring
17.	10241	Ball Bearing
18.	14794	Gasket
19.	13227	Rear End Plate
20.	44869	Cylinder
21.	43888	Rotor Vanes Assembly (Set of 5)
22.	54675	Rotor (1292L)
	54676	Rotor (1290L, 1291L)
23.	13226	Front End Plate (Includes Fig. 24)
24.	10221	Ball Bearing

Fig. No.	Part No.	Description
25.	41236	Wave Washer
26.	65831	Planetary Gear Assembly (1290L, 1291L)
	63019	Planetary Gear Assembly (1292L)
27.	10203	Ball Bearing
28.	25976	Washer
29.	54733	Spindle (1292L)
	65825	Spindle (1290L, 1291L)
30.	19206	Pinion Gear (1290L, 1291L)
31.	30369	Torrington Pin (1290L, 1291L)(2)*
	30467	Torrington Pin (1292L)(2)*
32.	19324	Gear & Bearing Assembly (1292L)(2)*
	19325	Gear & Bearing Assembly (1290L, 1291L)(2)*
33.	10080	Needle Bearing (1290L, 1291L)(4)*
	10028	Needle Bearing (1292L)(4)*
34.	30356	Grease Fitting
35.	35260	Washer
36.	21524	Retainer Ring (1292L)
	21753	Retainer Ring (1290L, 1291L)
37.	54728	Gear Case Key
38.	19240	Gear Case
39.	10244	Ball Bearing
40.	21804	Retaining Ring
41.	54727	Spacer
42.	04239	O-Ring

Fig. No.	Part No.	Description
43.	53525	Air Deflector Assembly (Standard Exhaust)
	63166	Remote Exhaust Assembly
44.	14339	O-Ring
45.	14124	Air Deflector Liner (Standard Exhaust)
46.	44798	Lock Sleeve
47.	2336	7" Guard (1291L)
48.	510	Backing Pad (1291L)
49.	25894	Washer (1291L)(2)*
50.	512	Lock Nut (1291L)
51.	30110	Allen Wrench (1291L)
52.	525	Sanding Disc Holder Assembly (1290L)
53.	525-7	Disc Pad (1290L)
54.	524	Lock Nut (1290L)
55.	846C	Polishing Disc Assembly (1292L)
56.	524	Lock Nut (1292L)

Not Shown:
35320 Wrench

***Order Quantity As Required
FURNISH CATALOG, SERIAL, AND
MODEL NUMBER
WHEN ORDERING PARTS**



Snap-on Power Tools, Inc.

Z380A_revA used on	
1290L	AIR SANDER 6000 RPM W/LEVER
1291L	AIR GRINDER 6000 RPM W/LEVER
1292L	AIR POLISHER 3000 RPM W/LEVER