



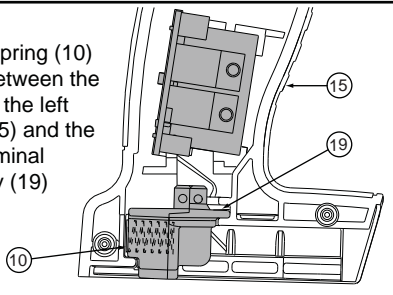
SERVICE PARTS LIST

BULLETIN NO.
54-24-2601

SPECIFY CATALOG NO. AND SERIAL NO. WHEN ORDERING PARTS		REVISED BULLETIN 54-24-2600	DATE July 2012
M18 1/2" COMPACT HAMMER-DRILL			
CATALOG NO.	2602-20	STARTING SERIAL NO.	C15B
		WIRING INSTRUCTION SEE PAGE 3	

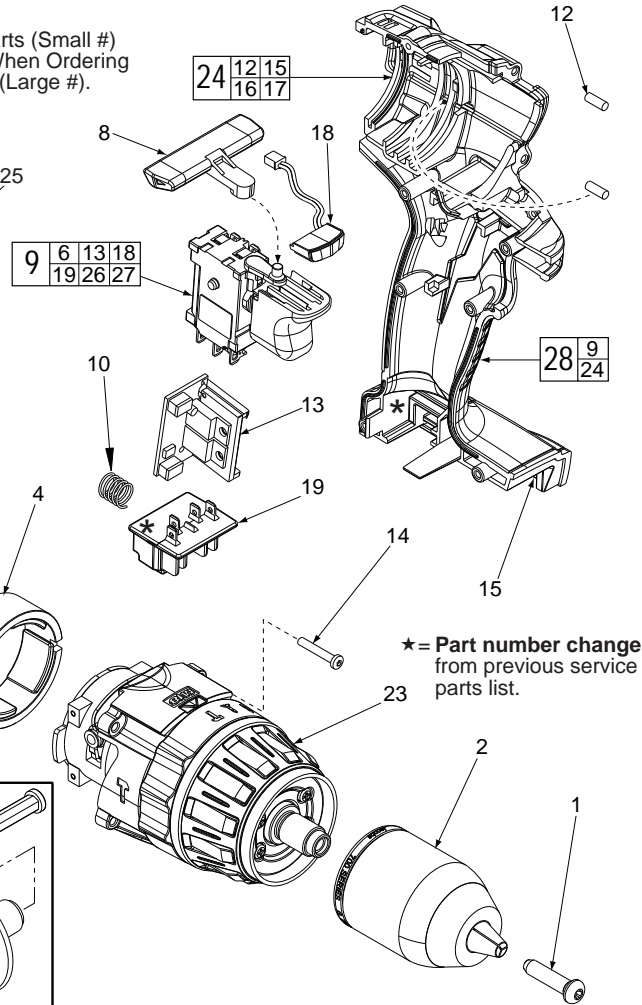
***NOTE:**

Compression spring (10) is positioned between the bottom/back of the left housing half (15) and the back of the terminal block assembly (19) as shown.



00 0

EXAMPLE:
Component Parts (Small #)
Are Included When Ordering
The Assembly (Large #).



*** = Part number change**
from previous service
parts list.

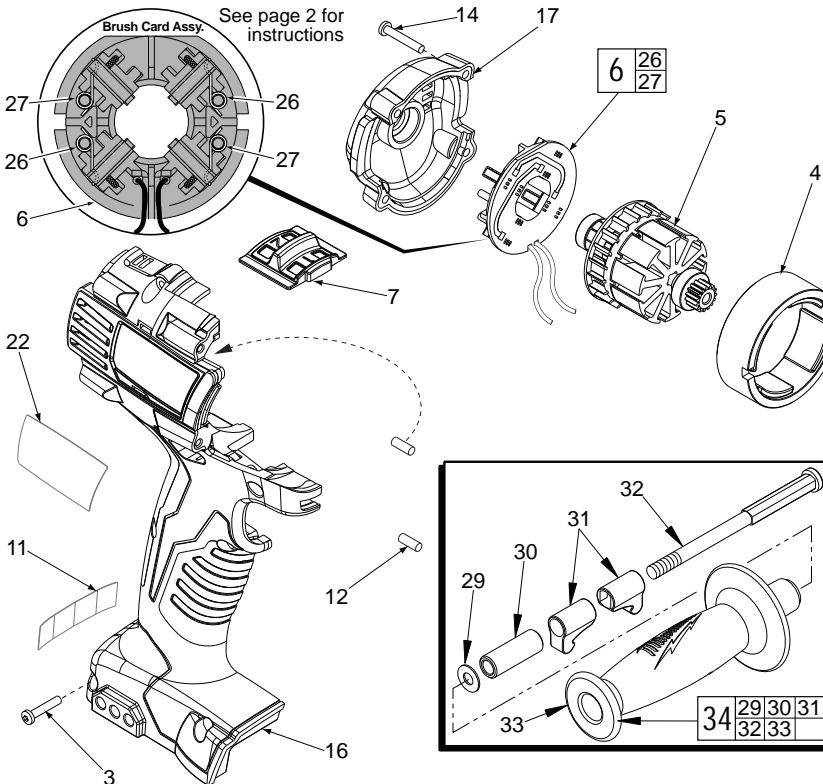


FIG.	PART NO.	DESCRIPTION OF PART	NO. REQ.
★ 1	05-88-1500	M6 x 1.0 LH Chuck Screw w/ locking patch	(1)
★ 2	42-66-0785	1/2" Keyless Chuck	(1)
3	05-88-0770	M3 x 16 Pan Hd. Plastite T-10 Screw	(7)
4	18-01-3010	Service Field	(1)
5	16-01-3015	Service Armature Assembly	(1)
6	22-22-1550	Brush Card	(1)
7	45-24-0250	High / Low Shifter	(1)
8	42-42-0850	Forward / Reverse Button	(1)
★ 9	23-66-1236	Service Switch Assembly	(1)
10	40-50-1090	Compression Spring	(1)
11	10-20-2695	Warning Label	(1)
12	45-30-0270	Rubber Slug	(4)
★ 13	-----	PCBA	(1)
14	05-88-0675	M3.0 x 20mm End Cap/Gearcase Scr T-10	(8)
★ 15	-----	Left Handle	(1)
★ 16	-----	Right Handle	(1)
17	42-50-1060	End Cap	(1)
★ 18	-----	LED Assembly	(1)
★ 19	-----	Terminal Block Assembly	(1)
22	12-20-2602	Service Nameplate Kit	(1)
23	14-29-0375	Service Gearcase Assembly	(1)
★ 24	31-44-2635	Service Housing Kit	(1)
25	42-55-2602	Carrying Case, Optional	(1)
26	40-50-2170	Brush Spring - Right Handed	(2)
27	40-50-2175	Brush Spring - Left Handed	(2)
★ 28	23-66-1237	Switch and Housing Kit	(1)
29	45-88-2090	Washer	(1)
30	45-22-0800	Sleeve	(1)
31	42-68-0925	Clamp	(2)
32	45-04-0975	Adjustment Screw	(1)

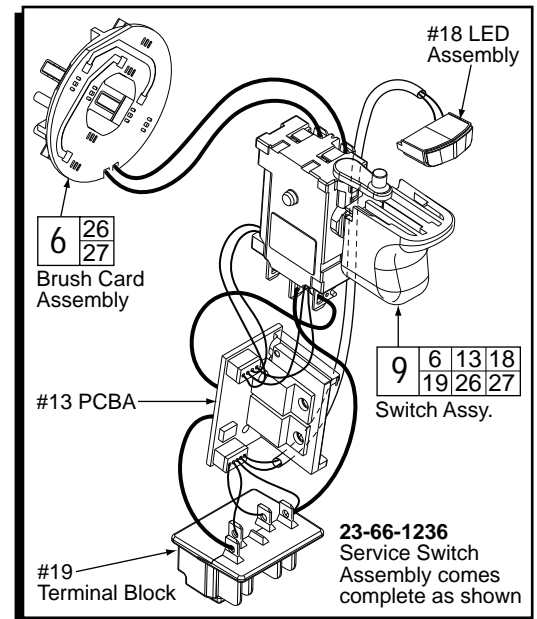
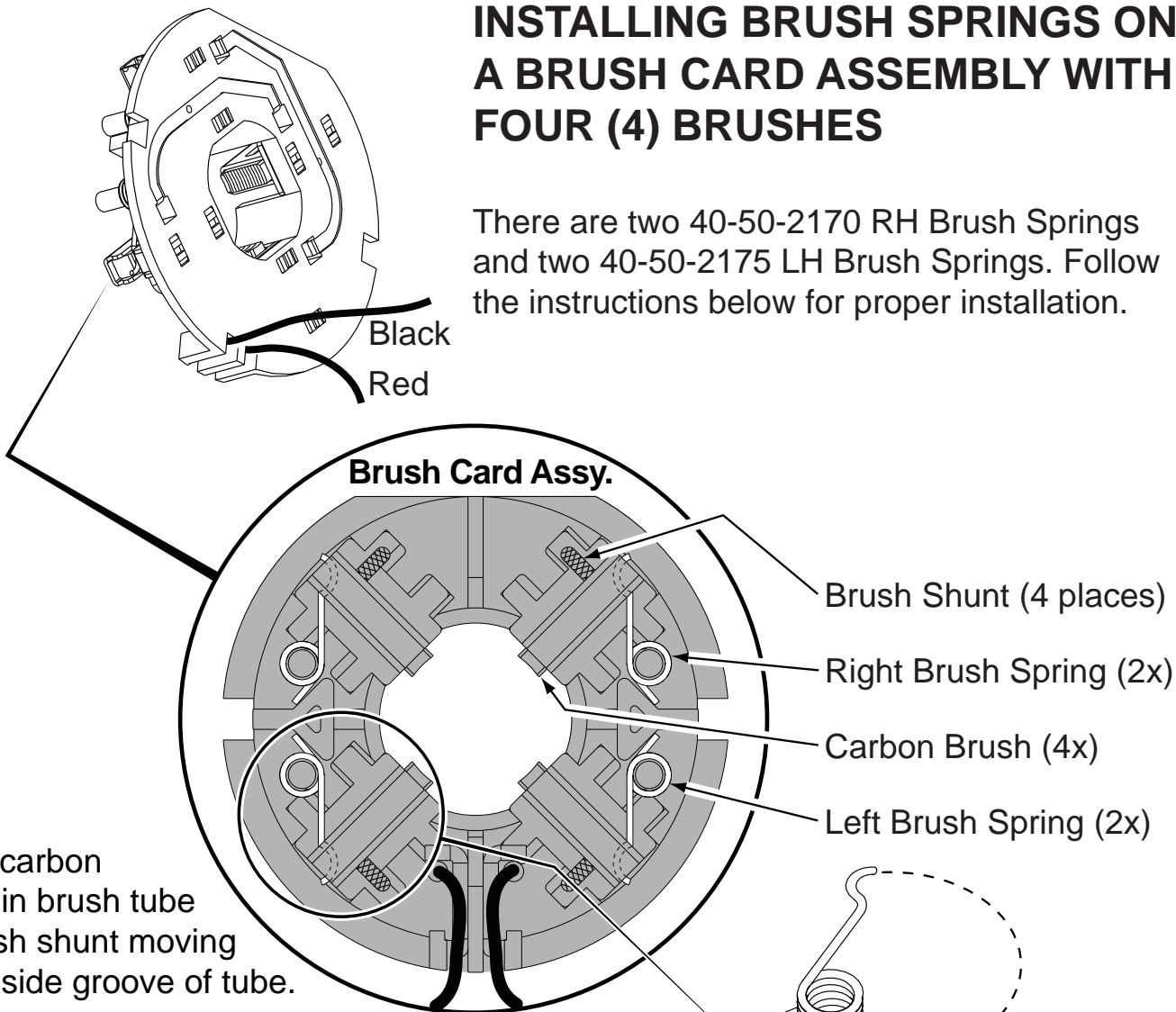


FIG.	PART NO.	DESCRIPTION OF PART	NO. REQ.
33	43-62-1375	Handle Grip	(1)
34	42-62-0525	Side Handle Assembly	(1)

MILWAUKEE ELECTRIC TOOL CORPORATION
13135 W. Lisbon Road, Brookfield, WI 53005
Drwg. 3

INSTALLING BRUSH SPRINGS ON A BRUSH CARD ASSEMBLY WITH FOUR (4) BRUSHES

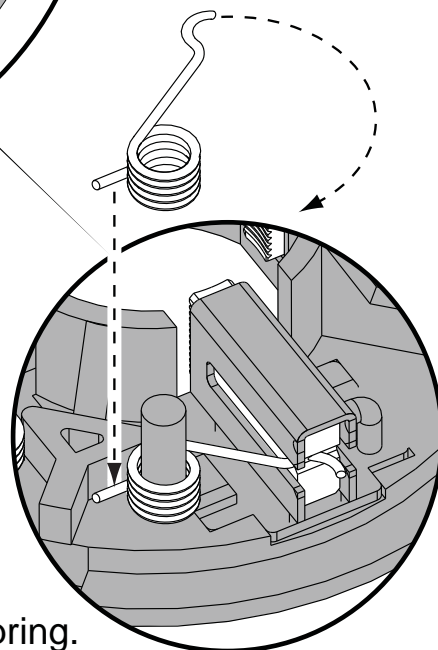
There are two 40-50-2170 RH Brush Springs and two 40-50-2175 LH Brush Springs. Follow the instructions below for proper installation.



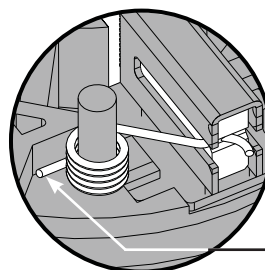
Be sure carbon brush is in brush tube with brush shunt moving freely in side groove of tube.

Place brush spring over post with short leg positioned downward as shown. Be sure spring is completely down with short leg trapped against 'Y' shaped wall on brush card.

While holding spring in place, bring the long leg of spring over the brush tube and through rear opening of tube. Position rounded hook of spring in groove on back of carbon brush. Be sure to check for free movement between carbon brush, brush shunt and brush spring.

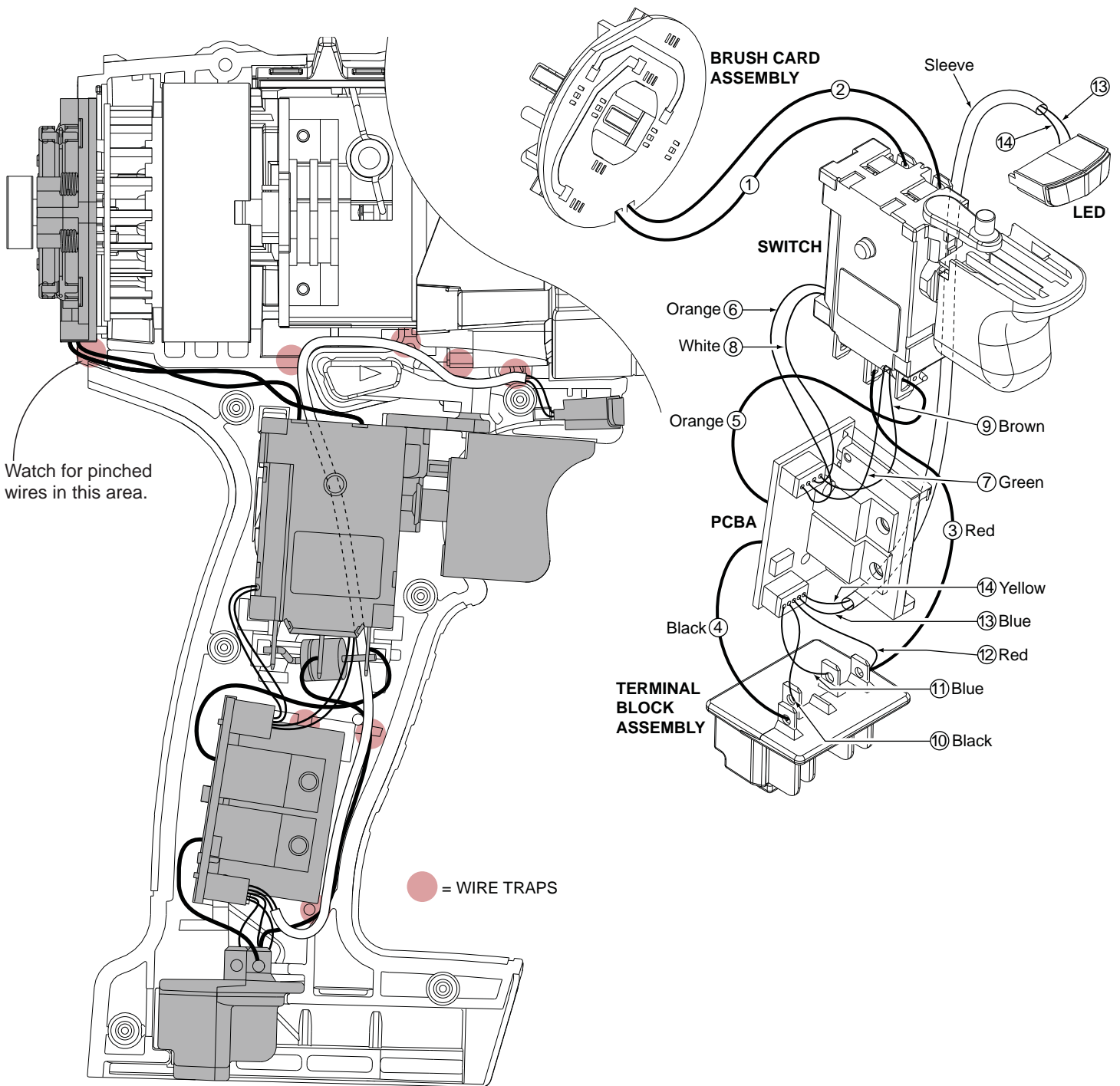


Wrong



Correct

Short leg of spring to the bottom



WIRING SPECIFICATIONS

Wire No.	Wire Color	Origin or Gauge	Length	Terminals, Connectors and 1 or 2 End Wire Preparation
1	Black	----	----	Component of Brush Card Assy. Connect to M2 on Switch.
2	Red	----	----	Component of Brush Card Assy. Connect to M1 on Switch.
3	Red	----	----	Component of Switch/Brush Card/Terminal Block Assembly.
4	Black	----	----	Component of Switch/Brush Card/Terminal Block Assembly.
5	Orange	----	----	Component of Switch/Brush Card/Terminal Block Assembly.
6	Orange	----	----	Component of Switch/Brush Card/Terminal Block Assembly.
7	Green	----	----	Component of Switch/Brush Card/Terminal Block Assembly.
8	White	----	----	Component of Switch/Brush Card/Terminal Block Assembly.
9	Brown	----	----	Component of Switch/Brush Card/Terminal Block Assembly.
10	Black	----	----	Component of Switch/Brush Card/Terminal Block Assembly.
11	Blue	----	----	Component of Switch/Brush Card/Terminal Block Assembly.
12	Red	----	----	Component of Switch/Brush Card/Terminal Block Assembly.
13	Blue	----	----	Component of Switch/Brush Card/Terminal Block Assy. (LED)
14	Yellow	----	----	Component of Switch/Brush Card/Terminal Block Assy. (LED)