



# SERVICE PARTS LIST

**BULLETIN NO.**  
**54-24-1277**

SPECIFY CATALOG NO. AND SERIAL NO. WHEN ORDERING PARTS				REVISED BULLETIN	DATE
<b>BREAKER HAMMER</b>				54-24-1276	Mar. 2000
<b>CATALOG NO.</b>	<b>5338</b>	<b>STARTING SERIAL NO.</b>	<b>805-8000</b>	<b>WIRING INSTRUCTION</b> <b>58-01-1490</b>	

**EXAMPLE:**



Component Parts (Small #) Are Included  
When Ordering The Assembly (Large #).

FIG.	PART NO.	DESCRIPTION OF PART	NO. REQ.	FIG.	PART NO.	DESCRIPTION OF PART	NO. REQ.
1	02-04-2125	Ball Bearing	(1)	71	43-44-0950 ●	Gasket-Gearcase Cover	(1)
2	02-04-5120	Ball Bearing	(1)	72	43-44-0955 ●	Gasket-Barrel	(1)
3	02-40-0010	Bearing Inner Race	(1)	73	43-84-0790	Top Cover Insert	(4)
4	02-40-0020	Bearing Inner Race	(1)	74	44-20-0290	Bit Lock	(1)
5	02-50-1160	Needle Bearing	(1)	★ 75	44-60-1595	Latch Pin	(1)
6	02-50-1170	Needle Bearing	(1)	76	44-52-0550	Cushion-Front	(1)
7	02-50-1180	Roller Bearing	(1)	77	44-52-0555	Cushion-Recoil	(1)
★ 8	02-50-1191	Needle Bearing	(2)	78	44-52-0560	Cushion Housing	(1)
★ 9	02-80-0115	Thrust Bearing	(1)	79	44-60-1355	Pin-Wrist	(1)
10	05-71-0015	M4 x 8 Slotted Pan Hd. Screw	(4)	80	44-60-1360	Pin-Spring	(1)
11	05-71-0020	M4 x 20 Slotted Pan Hd. Screw	(2)	81	44-62-0190	Piston	(1)
12	05-71-0030	M4 x 10 Posi Drive Pan Hd. Screw	(2)	82	44-70-0220	Plunger-Bit Lock	(1)
13	05-73-0050	M4 x 8 Slotted Round Head Screw	(2)	83	44-76-0240	Strain Relief	(1)
14	05-74-0090	M6 x 100 Skt. Hd. Cap Screw	(2)	84	44-82-0160	Ram	(1)
15	05-74-0160	M8 x 16 Skt. Hd. Cap Screw	(1)	85	44-86-0560	Retainer-Bearing	(1)
16	05-74-0170	M8 x 25 Skt. Hd. Cap Screw	(10)	86	44-86-0565	Retainer-Felt Ring	(1)
17	05-74-0180	M8 x 45 Skt. Hd. Cap Screw	(12)	87	44-90-4340 ●	Ring-Retaining	(4)
★ 18	05-74-0190	M6 x 20 Posi Drive Pan Hd. Screw	(4)	88	44-90-4345 ●	Ring-Felt	(1)
★ 19	05-74-0205	M12 x 50 Skt. Hd. Cap Screw	(8)	89	44-90-4350 ●	Ring-Wrist Pin Retaining	(2)
20	05-74-0210	Pozi-Pan Screw	(4)	90	44-94-0370	Connecting Rod	(1)
21	06-42-0100	Square Key	(1)	91	45-06-0600 ●	Seal-Switch	(1)
★ 22	45-88-7959	M6 Washer	(3)	92	45-06-0605 ●	Seal-Striker	(1)
23	06-57-3025	Lock Nut	(1)	93	45-06-0610 ●	Seal-Piston	(2)
24	06-57-3030	M16 Lock nut	(1)	94	45-36-1505	Spacer-Pinion	(1)
25	06-57-3035	Self-Locking Nut	(2)	95	45-36-1510	Spacer	(2)
★ 26	05-71-0025	M6 x 20 Socket Pan Hd. Screw	(3)	96	45-56-2605	Striker	(1)
★ 27	44-60-1600	Retaining Pin	(1)	97	45-72-0180	Trigger	(1)
★ 28	40-50-8855	Disc Spring	(2)	98	45-88-8410	Thrust Washer	(2)
29	16-70-0440	Armature	(1)	★ 99	45-88-8415	Thrust Washer	(3)
30	18-70-0440	Field	(1)	100	45-88-8420	M10 Washer	(3)
31	22-11-0010	Switch Box	(1)	101	45-88-8425 ●	Nylon Washer	(4)
32	-----	Carbon Brush	(2)	102	45-88-8430	Washer-Backing Plate	(1)
33	22-22-1460	Brush Holder Assembly	(1)	103	45-88-8435	Washer-Disc Spring	(1)
34	22-32-0390	Brush Cap	(2)	104	45-88-8440	Washer	(1)
35	22-38-0160	Cord Clamp	(1)	108	12-99-1200	Service Nameplate	(1)
36	22-64-3505	Cord Set	(1)	109	10-20-1235	Product Label	(2)
37	22-84-0860	Fan	(1)	110	10-20-1238	"Milwaukee" Label	(2)
38	22-90-0220	Grommet-Field Lead	(1)	112	28-92-0170	Trigger Retaining Plate	(1)
39	23-48-0125	PCV Sleeve	(1)	113	05-81-0910	M4 x 10 Self-Tapping Screw	(2)
40	23-52-1580	Brush Spring	(2)	114	06-95-1610	Nameplate Screw	(12)
41	23-56-0020	Switch Actuator	(1)	115	45-22-0141	Switch Sleeve	(1)
42	23-66-2141	Switch	(1)				
43	28-12-0340	Nosepiece	(1)				
44	28-25-0150	Barrel	(1)				
45	28-37-0040	Gear Case Housing	(1)				
46	28-72-1080	Bearing Housing	(1)				
47	28-90-0230	Support-Intermediate Shaft	(1)				
48	28-90-0240	Bearing Support	(1)				
49	31-15-0420	Switch Box Cover	(1)				
50	31-44-1790	Handle	(1)				
51	31-44-1795	Handle	(1)				
52	31-50-1025	Brush Holder Housing	(1)				
★ 53	32-40-2335	Intermediate Gear	(1)				
54	32-60-2560	Crank Shaft Gear	(1)				
55	34-40-4290 ●	O-Ring	(1)				
56	34-60-3570	Flat Wire Ring	(1)				
57	34-80-5050	Internal Retaining Ring	(1)				
58	34-80-5055	Internal Retaining Ring	(1)				
59	34-80-5060	Internal Retaining Ring	(1)				
60	36-17-0110	Crank Shaft	(1)				
★ 61	36-18-0576	Shaft-Intermediate	(1)				
62	36-66-4600	Pinion	(1)				
63	40-50-8540	Spring-Bit Lock	(1)				
64	40-50-8545	Spring	(2)				
65	40-50-8550	Spring-Disc	(2)				
66	42-92-0900	Cover-Top	(1)				
67	42-92-0905	Cover-Switch	(1)				
★ 68	42-92-0911	Cover-Gear	(1)				
69	42-96-0150 ●	Cup-Washer	(4)				
★ 70	45-83-0005	Vent	(1)				

**SEE REVERSE SIDE**

● **14-46-5338 LUBRICATION SERVICE KIT**

**THIS KIT CONTAINS:**

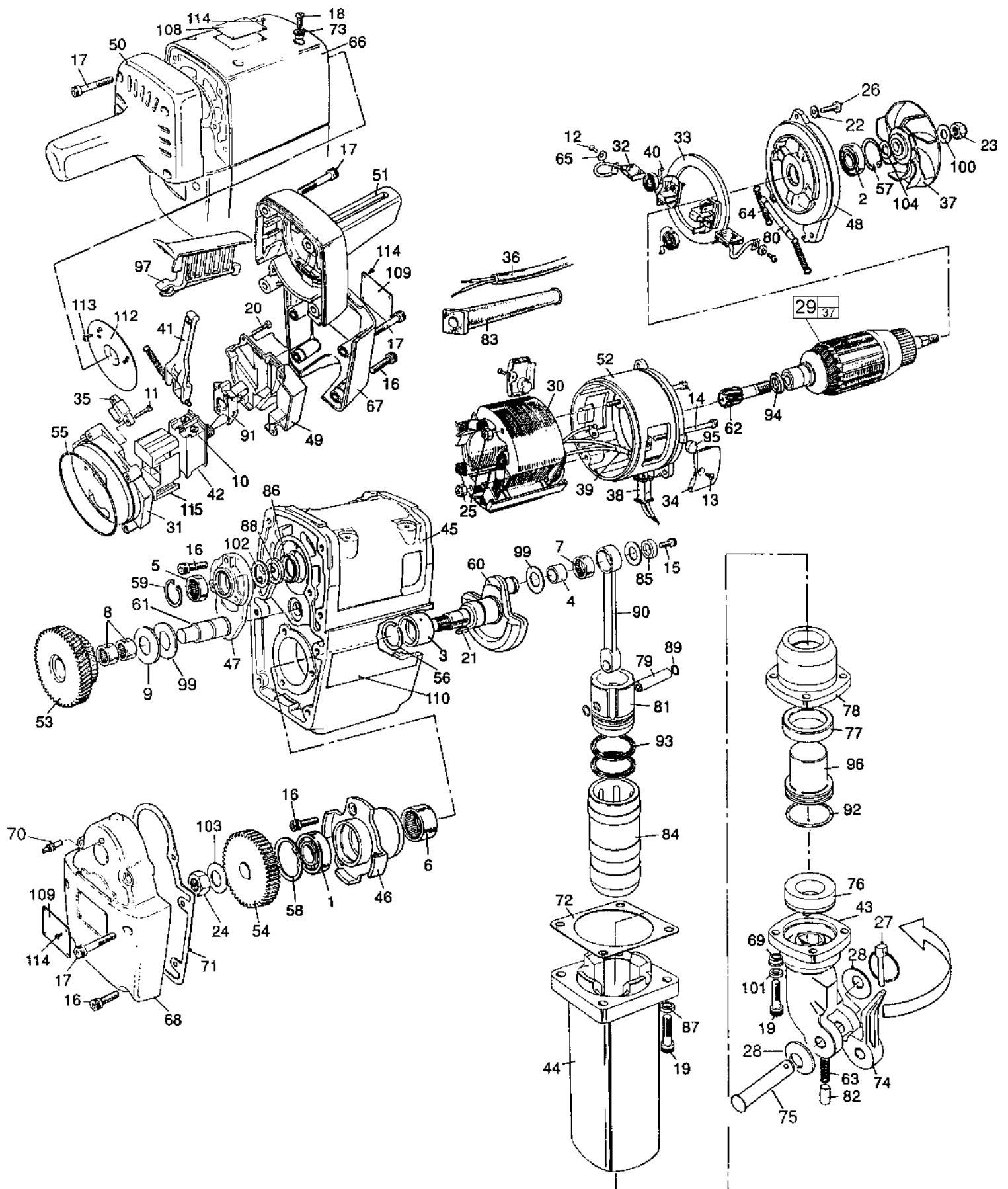
42-96-0150	Cup Washer	4
34-40-4290	O-Ring	1
43-44-0950	Gear Case Gasket	1
43-44-0955	Barrel Gasket	1
44-90-4340	Retaining Ring	4
44-90-4345	Felt Ring	1
44-90-4350	Wrist Pin Retaining Ring	2
45-06-0600	Switch Seal	1
45-06-0605	Striker Seal	1
45-06-0610	Piston Seal	2
45-88-8425	Nylon Washer	4
49-08-4230	6 Oz. Type "N" Grease	2

**22-18-0890 CARBON BRUSH SERVICE KIT**

**THIS KIT CONTAINS:**

-----	Carbon Brush	2
-------	--------------	---

**MILWAUKEE ELECTRIC TOOL CORPORATION**  
13135 W. LISBON RD., BROOKFIELD, WI 53005



### 5338 Service Notes

1. Check for wear between the bearing support (48) and brush holder housing (52). Wear between the two parts will allow the armature and field to drag against one another.
2. DO NOT use loctite on armature pinion (62), torque to 30 ft.lb.
3. Use blue loctite on all fasteners listed except as noted in note 2.
4. Cupped / dished side of disk spring (65) to face brush terminal.
5. Brush terminal screw and brush cover screws to be torqued to 10 in.lb.
6. Notch in switch (42) to face up when installed (off position).
7. Flat side of switch actuator (41) to face switch box (31).
8. Intermediate shaft support bolts to be torqued to 25 ft.lb.
9. Bearing housing (46) mounting bolts to be torqued to 30 ft.lb.
10. Crankshaft self locking nut (24) to be torqued to 50 ft.lb.
11. Crank shaft connecting rod retaining screw to be torqued to 30 ft.lb.
12. Gear case cover bolts to be torqued to 20 ft.lb.
13. Cap screws (16 & 17) securing side cover (67) and handles (50 & 51) to be torqued to 30 ft.lb.
14. Top cover screws (18) to be torqued to 30 in.lb.
15. Use a non hardening sealant such as Loctite 574 (Cat. No. 44-22-0574) between barrel (44), cushion housing (78) and threads of screws (19) holding nose piece to barrel. *Do not use silicone or a silicone based sealant.*
16. Barrel and nose mounting bolts to be torqued to 85 ft.lb.

### 5338 Grease Notes

Use type "N" (49-08-4230) for all grease in this tool.

NOTE: 1 1/2 oz. used in items 1-8 to properly coat all parts.

1. Apply a thin coating of grease to needle bearing (8), thrust bearing (9), intermediate shaft (61) and thrust washer (99).
2. Apply a thin coating to the bearing inner race (3) before assembly to crank shaft (60).
3. Apply a thin coating of grease to the O.D. of the piston (81) and wrist pin (79).
4. Apply a thin coating of grease to the inside and outside of the ram before assembly.  
NOTE: the internal grooves of the ram should not have excessive grease in them, only a thin coating.
5. Apply a thin coating of grease to the striker (96), front cushion (76) and recoil cushion (77) before assembly.
6. Saturate felt seal (88) with oil (30 weight) before installing into intermediate shaft support (47).
7. Apply a moderately heavy coating of grease to the piston seal grooves and piston seals (93) during assembly to piston.
8. Apply a moderately heavy coating of grease to the striker seal groove and striker seal (92) during assembly.
9. Place 1 1/4 oz. in bearing housing (46) area before installing crankshaft.
10. Place 1/4 oz. under bearing retainer (85) in needle bearing (7) area when assembling connecting rod to crankshaft.
11. Place 2 oz. of grease above each gear area in gear case cover (68) ( 4 oz. total).
12. Place 1 oz of grease in rear cavity of piston (81).
13. Place 1/2 oz. of grease on top of piston (81) before assembly to ram (84).
14. When installing ram over piston use a twisting motion and compress.  
NOTE: two compressions of air should occur to properly seat the ram and piston.
15. Apply 3/4 oz. of grease to each of the four lands inside the barrel (44) (3 oz. total) before assembling over ram.
16. Place 1/2 oz. on top of striker (96) once the striker is installed in the cushion housing (78).

GREASING CAT. NO. 5338

Use grease Part No. 49-08-4230, Type "N"  
 - 1 1/2 oz. use to "coat" parts  
 - 12 oz used total

