



SERVICE PARTS LIST

BULLETIN NO.

54-24-0226

SPECIFY CATALOG NO. AND SERIAL NO. WHEN ORDERING PARTS

REVISED BULLETIN
54-24-0225

DATE
Dec. 2006

1-1/2" ROTARY HAMMER

CATALOG NO. 5347

STARTING SERIAL NO. 688-104094

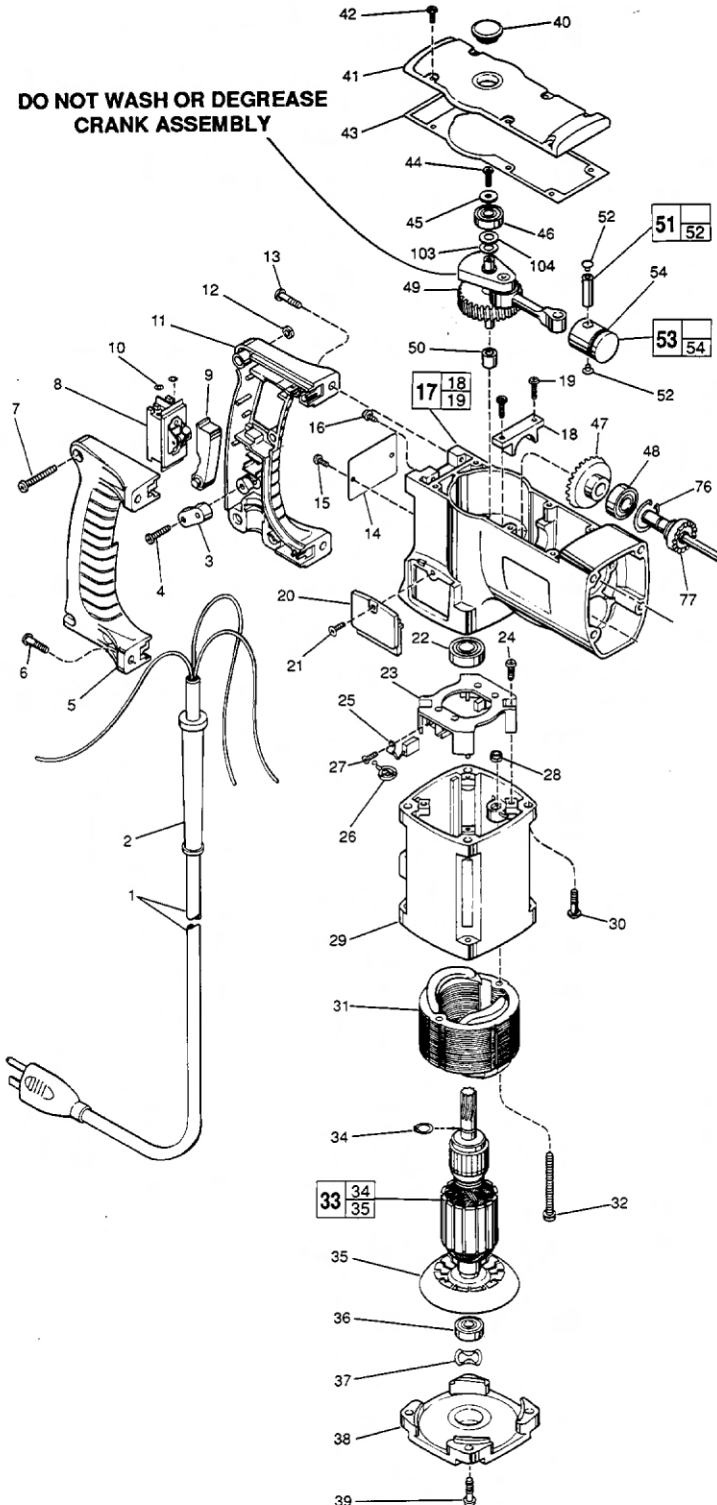
WIRING INSTRUCTION
58-01-0734

EXAMPLE:



Component Parts (Small #) Are Included When Ordering The Assembly (Large #).

DO NOT WASH OR DEGREASE CRANK ASSEMBLY



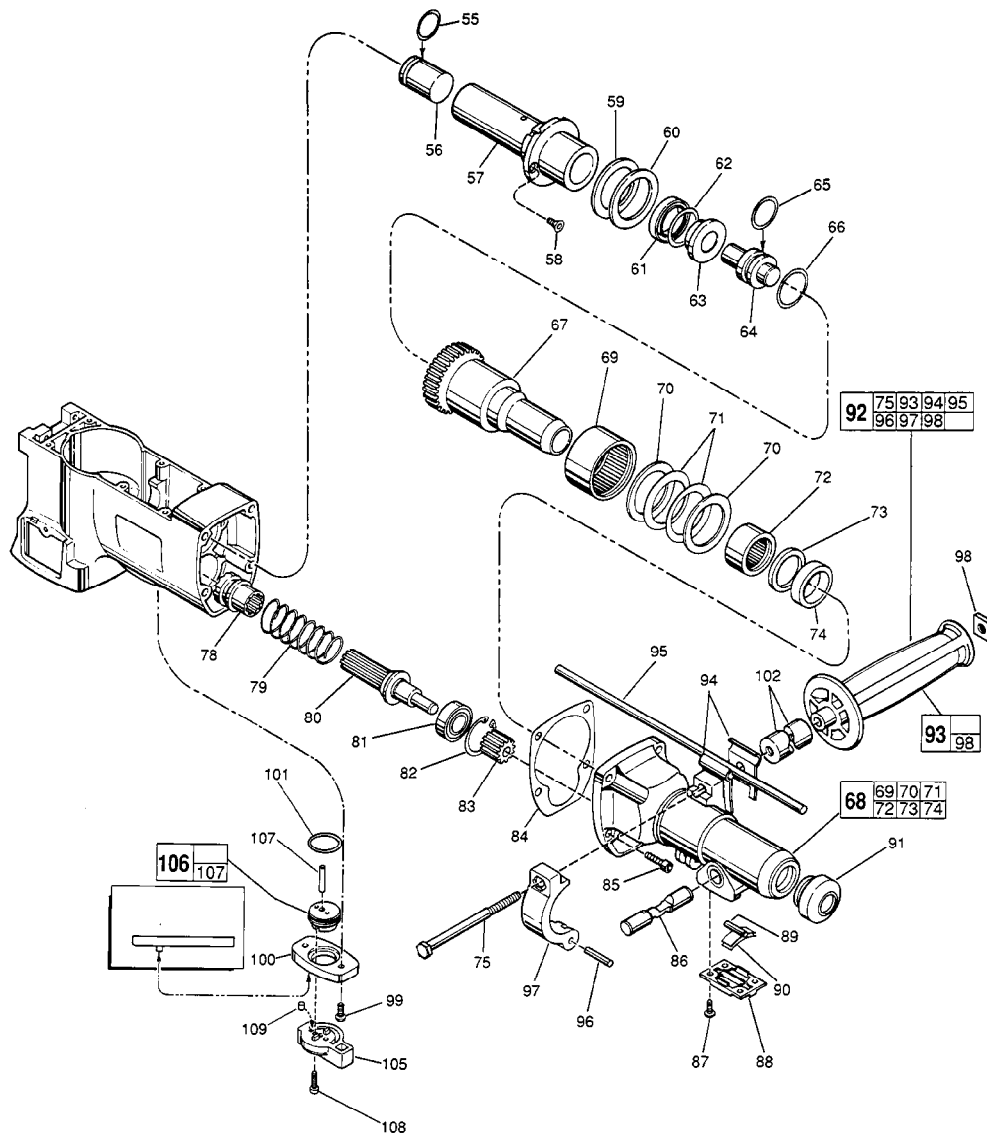
| FIG. | PART NO. | DESCRIPTION OF PART | NO. REQ. |
|-------|------------|---------------------------------|----------|
| 1 | 22-64-0121 | Cord Set | (1) |
| 2 | 44-76-0050 | Cord Protector | (1) |
| 3 | 31-17-0180 | Cord Clamp | (1) |
| 4 | 05-78-0571 | M4.55 x 1.59 x 19 Pan Hd. Screw | (2) |
| ★ 5 | 31-44-1620 | Right Handle Half | (1) |
| 6 | 05-78-0570 | M4.55 x 1.59 x 16 Pan Hd. Screw | (2) |
| 7 | 05-81-0650 | M5 x .8 x 25 Pan Hd. Screw | (3) |
| 8 | 23-66-1230 | Switch | (1) |
| 9 | 31-92-0230 | Trigger | (1) |
| 10 | 06-97-1800 | No. 6 Int. Tooth Lockwasher | (4) |
| ★ 11 | 31-44-1610 | Left Handle Half | (1) |
| 12 | 05-55-0610 | M5 x .8 Hex Nut | (3) |
| 13 | 05-78-0665 | M5 x .8 x 20 Pan Hd. Screw | (2) |
| ★ 14 | 12-99-0870 | Nameplate Blank | (1) |
| 15 | 06-85-0200 | Nameplate Screw | (2) |
| 16 | 05-78-0415 | M4 x .7 x 10 Sems Ground Screw | (1) |
| ★ 17 | 28-14-2181 | Crankcase | (1) |
| 18 | | Bearing Cap | (1) |
| 19 | 05-78-0460 | M4 x .7 x 16 Pan Hd. Screw | (2) |
| 20 | 31-15-0250 | Brush Cover | (2) |
| 21 | 05-78-0440 | M4 x .7 x 10 Pan Hd. Screw | (2) |
| 22 | 02-04-1203 | Ball Bearing | (1) |
| ★ 23 | 22-22-1420 | Brush Carrier Assembly | (1) |
| 24 | 05-78-0340 | M3.63 x 1.34 x 10 Pan Hd. Screw | (2) |
| 25 | 22-18-0780 | Carbon Brush Set | (1) |
| 26 | 23-52-1550 | Brush Spring | (2) |
| 27 | 05-78-0405 | M4 x .7 x 10 Pan Hd. Screw | (2) |
| 28 | 06-57-3005 | 10-32 Locking Hex Nut | (2) |
| ★ 29 | 31-50-0940 | Motor Housing | (1) |
| 30 | 05-74-0515 | M5 x .8 x 20 Socket Hd. Sems | (4) |
| ★ 31 | 18-50-0151 | 120 Volt Field | (1) |
| 32 | 06-81-7470 | 10-32 x 1-7/8 Pan Hd. Sems | (2) |
| 33 | 16-50-0150 | 120 Volt Armature | (1) |
| 34 | 34-60-0950 | Retaining Ring | (1) |
| 35 | 22-84-0710 | Fan | (1) |
| 36 | 02-04-0850 | Ball Bearing | (1) |
| 37 | 45-88-0577 | Wave Washer | (1) |
| 38 | 31-15-0270 | Motor Housing Cover | (1) |
| 39 | 05-78-0570 | M4.55 x 1.59 x 16 Pan Hd. Screw | (4) |
| ★ 40 | 31-12-0220 | Cover Cap | (1) |
| ★ 41 | 28-20-1305 | Crank Case Cover | (1) |
| 42 | 05-78-0460 | M4 x .7 x 10 Pan Hd. Screw | (6) |
| 43 | 43-44-0650 | Gasket | (1) |
| 44 | 05-78-0440 | M4 x .7 x 10 Pan Hd. Screw | (1) |
| 45 | 45-88-0920 | Flat Washer - Spring Steel | (1) |
| 46 | 02-04-0850 | Ball Bearing | (1) |
| 47 | 32-05-1250 | Bevel Gear | (1) |
| 48 | 02-04-1022 | Ball Bearing | (1) |
| 49 | 14-09-0105 | Crank Assembly | (1) |
| 50 | 02-50-1645 | Needle Bearing | (1) |
| 51 | 44-60-0790 | Piston Pin Assembly | (1) |
| 52 | 42-42-0240 | Button | (2) |
| 53 | 14-46-5000 | Piston Assembly | (1) |
| 54 | 34-40-4090 | O-Ring | (1) |
| 76 | 34-80-2006 | Internal Retaining Ring | (1) |
| 77 | 36-14-0700 | Clutch Shaft | (1) |
| ★ 103 | 45-88-0611 | .003 Shim Washer | (1) |
| ★ 104 | 45-88-0612 | .008 Shim Washer | (1) |
| | 10-98-6335 | Product Label - H.D. 1-1/2" | (1) |
| | 10-98-6340 | Product Label - U.S. 1 | (1) |

14-46-1193 1-1/2" HAMMER SERVICE KIT
THIS KIT INCLUDES:

- 1 31-12-0220 Cover Cap
- 1 34-40-4085 O-Ring
- 2 34-40-4090 O-Ring
- 1 34-40-4095 O-Ring
- 1 34-40-4100 O-Ring
- 1 43-44-0650 Gasket
- 1 43-44-0670 Gasket
- 1 43-44-0920 Gasket
- 1 45-06-0290 Quad Ring Seal
- 1 49-08-4161 5 Oz. Tube "K" Grease

SEE REVERSE SIDE

MILWAUKEE ELECTRIC TOOL CORPORATION
13135 W. LISBON RD., BROOKFIELD, WI 53005



| FIG. | PART NO. | DESCRIPTION OF PART | NO. REQ. |
|------|------------|-------------------------------------|----------|
| 55 | 34-40-4090 | O-Ring | (1) |
| 56 | 44-82-0102 | Ram | (1) |
| 57 | 42-98-0165 | Service Barrel Assembly | (1) |
| 58 | 05-78-0435 | M4 x .7 x 13 Flat Hd. Taptite Screw | (2) |
| 59 | 44-90-0562 | Damping Ring - Plastic | (1) |
| 60 | 45-88-7851 | Thrust Washer - Steel | (1) |
| 61 | 45-88-8015 | Cushion Washer | (1) |
| 62 | 34-40-4085 | O-Ring | (1) |
| 63 | 45-88-8020 | Cushion Washer | (1) |
| 64 | 45-56-2551 | Striker | (1) |
| 65 | 34-40-4095 | O-Ring | (1) |
| 66 | 34-40-4100 | O-Ring | (1) |
| 67 | 38-50-5541 | Spindle | (1) |
| 68 | 28-12-0315 | Nose Assembly | (1) |
| 69 | 02-50-9976 | Needle Bearing | (1) |
| 70 | 45-88-0900 | Thrust Washer | (2) |
| 71 | 40-50-7850 | Belleville Spring | (2) |
| 72 | 02-50-6455 | Needle Bearing | (1) |
| 73 | 45-06-0250 | Seal | (1) |
| 74 | 45-88-5175 | Felt Washer | (1) |
| ★ 75 | 06-75-0354 | 5/16 -18 x 3.5 Hex Hd. Bolt | (1) |
| 78 | 36-14-0710 | Splined Clutch | (1) |
| 79 | 40-50-3250 | Clutch Spring | (1) |
| 80 | 14-08-0125 | Splined Clutch Assembly | (1) |
| 81 | 02-04-1510 | Ball Bearing | (1) |
| 82 | 34-80-2355 | Internal Retaining Ring | (1) |
| 83 | 32-60-2160 | Pinion | (1) |
| 84 | 43-44-0670 | Gasket | (1) |
| 85 | 05-74-0615 | M6 x 1.0 x 20 Socket Hd. Cap Screw | (4) |
| 86 | 44-20-0221 | Bit Lock | (1) |
| 87 | 05-78-0440 | M4 x .7 x 10 Pan Hd. Screw | (4) |
| 88 | 28-20-1295 | Bit Lock Cover | (1) |
| 89 | 06-65-1315 | Dowel Pin | (1) |

| FIG. | PART NO. | DESCRIPTION OF PART | NO. REQ. |
|-------|------------|---------------------------------|----------|
| 90 | 40-50-3275 | Bit Retainer Spring | (2) |
| 91 | 42-76-0380 | Dust Collar | (1) |
| ★ 92 | 43-62-0962 | Side Handle Assembly | (1) |
| 93 | 43-62-0865 | Side Handle Assembly | (1) |
| 94 | 42-68-0390 | Depth Gage Clamp | (2) |
| 95 | 44-94-0165 | Depth Gage Rod | (1) |
| 96 | 06-65-0631 | Groove Pin | (1) |
| ★ 97 | 28-82-0165 | Handle Ring Half | (2) |
| ★ 98 | 06-54-0300 | Square Nut | (1) |
| 99 | 05-78-0440 | M4 x .7 x 10 Pan Hd. Screw | (2) |
| ★ 100 | 44-86-0530 | Shift Lever Retainer | (1) |
| 101 | 34-40-4160 | O-Ring | (1) |
| ★ 102 | 45-36-1180 | Spacer | (1) |
| 105 | 44-10-0150 | Shift Lever | (1) |
| ★ 106 | 14-14-0152 | Shift Disc Assembly | (1) |
| 107 | | Dowel Pin | (1) |
| 108 | 05-78-0300 | M3 x .5 x 16MM Socket Hd. Screw | (2) |
| ★ 109 | 45-30-0060 | Retaining Slug | (1) |

FIG. NOTES:

19,58,

- 87 Apply Type 242 Blue Loctite. Torque To 30-35 In.-Lb.
- 50 Press Flush To Bottom Of Bore (1.845 Deep).
- 85 Apply Type 242 Blue Loctite and Torque To 130-140 In.-Lb.

FIG. LUBRICATION

- 49 2-1/2 Oz. Type "K" Grease, No. 49-08-4161.
- 80 1-1/2 Oz. Type "K" Grease, No. 49-08-4161.
- 83 1 Oz. Type "K" Grease, No. 49-08-4161.

Grease All Rubber Parts When Assembling .