



SERVICE PARTS LIST

BULLETIN NO.
54-24-0225

SPECIFY CATALOG NO. AND SERIAL NO. WHEN ORDERING PARTS		REVISED BULLETIN	DATE
1-1/2" ROTARY HAMMER		54-24-0224	Dec. 2006
CATALOG NO. 5347	STARTING SERIAL NO. 688-73001	WIRING INSTRUCTION 58-01-0734	

EXAMPLE:

00 0

Component Parts (Small #)
Are Included When Ordering
The Assembly (Large #).

FIG.	PART NO.	DESCRIPTION OF PART	NO.	REQ	FIG.	PART NO.	DESCRIPTION OF PART	NO.	REQ
1	22-64-0121	Cord Set	(1)		69	02-50-9976	Needle Bearing	(1)	
2	44-76-0050	Cord Protector	(1)		70	45-88-0900	Thrust Washer	(2)	
3	31-17-0180	Cord Clamp	(1)		71	40-50-7850	Belleville Spring	(2)	
4	05-78-0571	M4.55 x 1.59 x 19 Pan Hd. Screw	(2)		72	02-50-6455	Needle Bearing	(1)	
5	31-44-1210	Right Handle Half	(1)		73	45-06-0250	Seal	(1)	
6	05-78-0570	M4.55 x 1.59 x 16 Pan Hd. Screw	(2)		74	45-88-5175	Felt Washer	(1)	
7	05-81-0650	M5 x .8 x 25 Pan Hd. Screw	(3)		75	05-78-0300	M3x.5x16 Socket Hd. Screw	(2)	
8	23-66-1230	Switch	(1)		76	34-80-2006	Internal Retaining Ring	(1)	
9	31-92-0230	Trigger	(1)		77	36-14-0700	Clutch Shaft	(1)	
10	06-97-1800	No. 6 Int. Tooth Lockwasher	(4)		78	36-14-0710	Spined Clutch	(1)	
11	31-44-1200	Left Handle Half	(1)		79	40-50-3250	Clutch Spring	(1)	
12	05-55-0610	M5 x .8 Hex Nut	(3)		80	14-08-0125	Spined Clutch Assembly	(1)	
13	05-78-0665	M5 x .8 x 20 Pan Hd. Screw	(2)		81	02-04-1510	Ball Bearing	(1)	
14	12-99-0013	Nameplate Blank	(1)		82	34-80-2355	Internal Retaining Ring	(1)	
15	06-85-0200	Nameplate Screw	(2)		83	32-60-2160	Pinion	(1)	
16	05-78-0415	M4 x .7 x 10 Sems Ground Screw	(1)		84	43-44-0670	Gasket	(1)	
17	28-14-1562	Crankcase Assembly	(1)		85	05-74-0615	M6 x 1.0 x 20 Socket Hd. Cap Screw	(4)	
18		Bearing Cap	(1)		86	44-20-0221	Bit Lock	(1)	
19	05-78-0460	M4 x .7 x 16 Pan Hd. Screw	(2)		87	05-78-0440	M4 x .7 x 10 Pan Hd. Screw	(4)	
20	31-15-0250	Brush Cover	(2)		88	28-20-1295	Bit Lock Cover	(1)	
21	05-78-0440	M4 x .7 x 10 Pan Hd. Screw	(2)		89	06-65-1315	Dowel Pin	(1)	
22	02-04-1203	Ball Bearing	(1)		90	40-50-3275	Bit Retainer Spring	(2)	
23	22-22-0650	Brush Carrier Assembly	(1)		91	42-76-0380	Dust Collar	(1)	
24	05-78-0340	M3.63 x 1.34 x 10 Pan Hd. Screw	(2)		92	43-62-0961	Side Handle Assembly	(1)	
25	22-18-0780	Carbon Brush Set	(1)		93	43-62-0865	Side Handle Assembly	(1)	
26	23-52-1550	Brush Spring	(2)		94	42-68-0390	Depth Gage Clamp	(2)	
27	05-78-0405	M4 x .7 x 10 Pan Hd. Screw	(2)		95	44-94-0165	Depth Gage Rod	(2)	
28	06-57-3005	10-32 Locking Hex Nut	(2)		96	28-82-0160	Handle Ring Half	(1)	
29	31-50-0400	Motor Housing	(1)		97	06-65-0631	Groove Pin	(1)	
30	05-74-0515	M5 x .8 x 20 Socket Hd. Sems	(4)		98	06-75-0353	5/16 -18 x 3.5 Hex Hd. Bolt	(1)	
31	18-50-0150	120 Volt Field	(1)		★ 99	14-14-0151	Shift Disk Assembly	(1)	
32	06-81-7470	10-32 x 1-7/8 Pan Hd. Sems	(2)		100		Dowel Pin	(1)	
33	16-50-0150	120 Volt Armature	(1)		101	02-02-0120	Detent Ball	(1)	
34	34-60-0950	Retaining Ring	(1)		102	40-50-1020	Detent Spring	(1)	
35	22-84-0710	Fan	(1)		103	44-86-0380	Shift Lever Retainer	(1)	
36	02-04-0850	Ball Bearing	(1)		104	05-78-0440	M4x.7x10 Pan Hd. Screw	(2)	
37	45-88-0577	Wave Washer	(1)		105	44-10-0150	Shift Lever	(1)	
38	31-15-0270	Motor Housing Cover	(1)			10-98-5986	Warning Label	(1)	
39	05-78-0570	M4.55 x 1.59 x 16 Pan Hd. Screw	(4)			10-98-6335	Product Label H.D. 1-1/2"	(1)	
40	31-75-0020	Cover Screw	(1)			10-98-6340	Product Label U.S. 1	(1)	
41	28-20-1250	Crank Case Cover	(1)						
42	05-78-0460	M4 x .7 x 10 Pan Hd. Screw	(6)						
43	43-44-0650	Gasket	(1)						
44	05-78-0440	M4 x .7 x 10 Pan Hd. Screw	(1)						
45	45-88-0920	Flat Washer - Spring Steel	(1)						
46	02-04-0850	Ball Bearing	(1)						
47	32-05-1250	Bevel Gear	(1)						
48	02-04-1022	Ball Bearing	(1)						
49	14-09-0105	Crank Assembly	(1)						
50	02-50-1645	Needle Bearing	(1)						
51	44-60-0790	Piston Pin Assembly	(1)						
52	42-42-0240	Button	(2)						
★ 53	14-46-5000	Piston Assembly	(1)						
★ 54	34-40-4160	O-Ring	(1)						
★ 55	34-40-4090	O-Ring	(2)						
★ 56	44-82-0102	Ram	(1)						
★ 57	42-98-0165	Barrel	(1)						
58	05-78-0435	M4 x .7 x 13 Flat Hd. Taptite Screw	(2)						
★ 59	44-90-0562	Damping Ring - Plastic	(1)						
60	45-88-7851	Thrust Washer - Steel	(1)						
61	45-88-8015	Cushion Washer	(1)						
62	34-40-4085	O-Ring	(1)						
63	45-88-8020	Cushion Washer	(1)						
64	45-56-2551	Striker	(1)						
65	34-40-4095	O-Ring	(1)						
66	34-40-4100	O-Ring	(1)						
67	38-50-5541	Spindle	(1)						
68	28-12-0315	Nose Assembly	(1)						

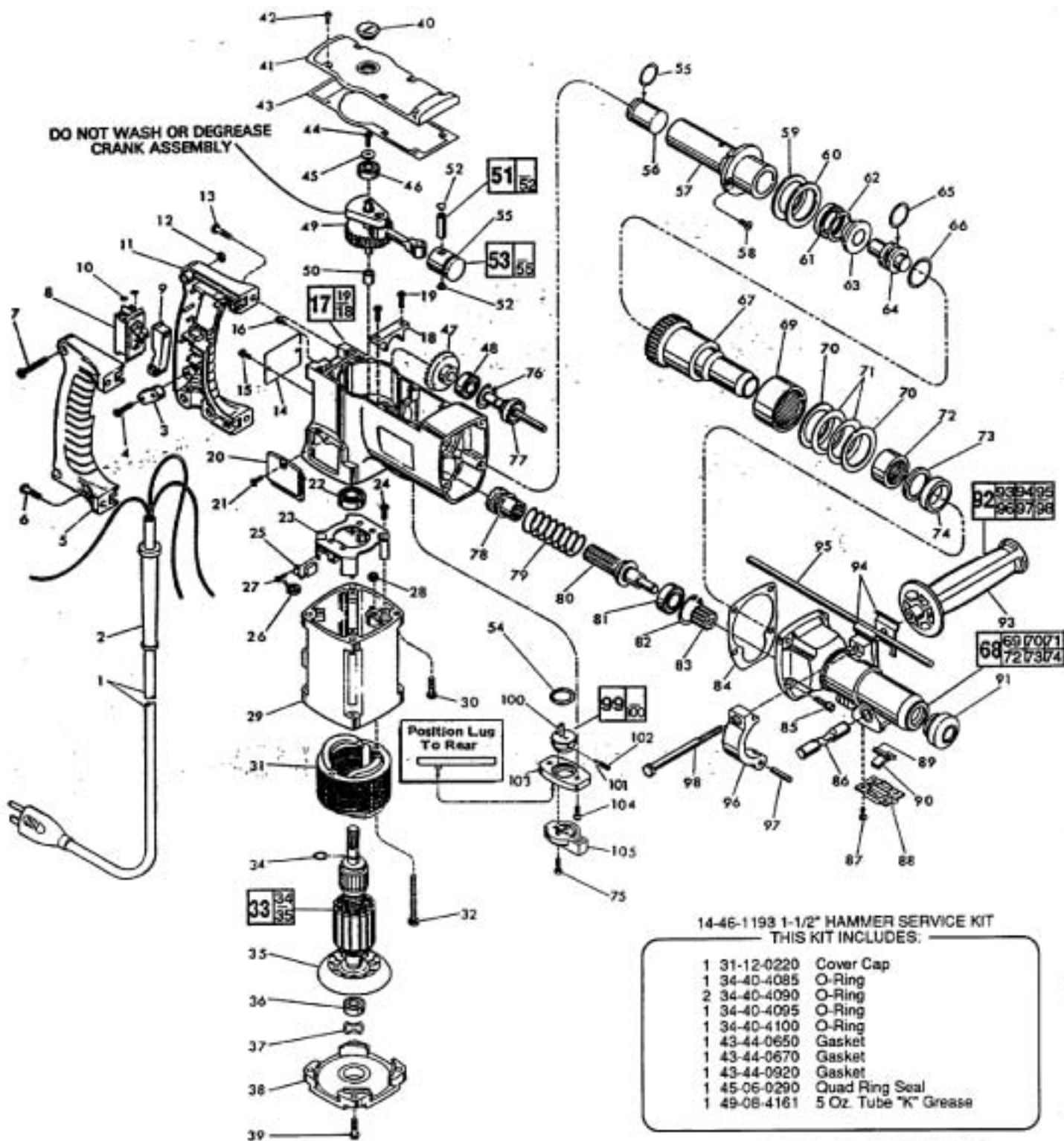
FIG. NOTES

- 19 Apply Type 242 Blue Loctite
- 50 PressFlush To Casting Surface Inside Crankcase Area
- 58 Apply Type 242 Blue Loctite
- 85 Apply Type 242 Blue Loctite and Torque To 130-140 In./Lb.
- 87 Apply Type 242 Blue Loctite

FIG. LUBRICATION

- ★ 49 2-1/2 Oz. Type "K" Grease, No. 49-08-4161
- ★ 80 1-1/2 Oz. Type "K" Grease, No. 49-08-4161
- ★ 83 1 Oz. Type "K" Grease, No. 49-08-4161

Grease All Rubber Parts When Assembling



Note: TOOL TO BE RUN AT NO-LOAD FOR 10 MINUTES WHENEVER NEW BRUSHES ARE INSTALLED.