



SERVICE PARTS LIST

BULLETIN NO.
54-24-0121

SPECIFY CATALOG NO. AND SERIAL NO. WHEN ORDERING PARTS		REVISED BULLETIN 54-24-0120	DATE April '85
1/2" MAGNUM HAMMER DRILL			
CATALOG NO. 5374		STARTING SERIAL NO. 666-1100	
CAT. NO. 5374-€		BILINGUAL LABEL 10-98-6400	

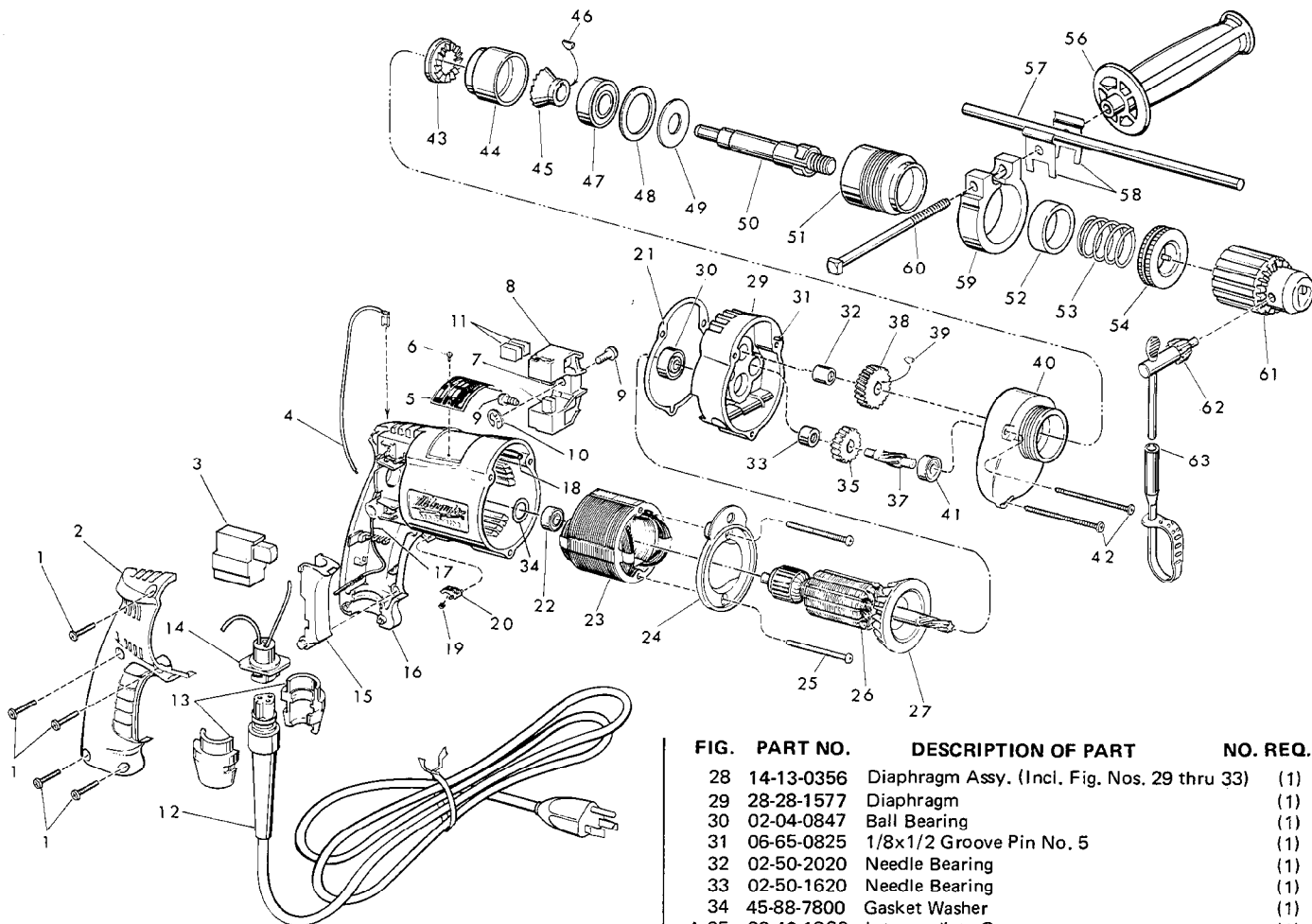


FIG.	PART NO.	DESCRIPTION OF PART	NO. REQ.
	1	06-95-0185 7-18 x 11/16 Plastite Screw	(5)
	2	31-15-0101 Handle Cover	(1)
★	3	23-66-1340 Switch	(1)
	4	23-94-9640 7" Lead Assembly	(1)
	5	12-99-0220 Nameplate Blank	(1)
	6	06-85-0200 Nameplate Screw	(2)
	7	22-16-0275 Carbon Brush	(2)
	8	22-22-0355 Brush Holder Assy. (Incl. Fig. 9 thru 11)	(1)
	9	31-75-0011 Brush Holder Screw	(2)
	10	34-60-0500 1/4" External Retaining Ring	(1)
	11	22-16-0275 Carbon Brush (Spares)	(2)
	12	48-76-3008 8 Foot Quick-Lok Cord Set (Incl. Fig. No. 13)	(1)
	13	44-40-0440 Cord Nut	(2)
	14	22-56-0302 Pin Housing Assembly	(1)
	15	45-72-0080 Trigger	(1)
	16	14-38-0345 Motor Housing Assy. (Incl. Fig. Nos. 17 & 18)	(1)
	17	23-94-9686 Ground Wire Assembly	(1)
	18	44-60-0570 Grounding Pin	(1)
	19	40-50-0085 Lock Button Spring	(1)
	20	42-42-0150 Lock Button	(1)
★	21	43-44-0576 Gasket	(1)
	22	02-04-0645 Ball Bearing	(1)
	23	18-10-0045 120 Volt Field	(1)
	24	31-05-0065 Baffle	(1)
	25	06-95-0140 No. 7x1-7/8" Pan Hd. Screw	(2)
★	26	16-10-0500 120V Armature (Includes Fig. No. 27)	(1)
	27	22-84-0650 Fan Assembly	(1)

FIG.	PART NO.	DESCRIPTION OF PART	NO. REQ.
	28	14-13-0356 Diaphragm Assy. (Incl. Fig. Nos. 29 thru 33)	(1)
	29	28-28-1577 Diaphragm	(1)
	30	02-04-0847 Ball Bearing	(1)
	31	06-65-0825 1/8x1/2 Groove Pin No. 5	(1)
	32	02-50-2020 Needle Bearing	(1)
	33	02-50-1620 Needle Bearing	(1)
	34	45-88-7800 Gasket Washer	(1)
★	35	32-40-1820 Intermediate Gear	(1)
★	36	10-98-5987 Caution Label (Not Shown) Omit For Canadian Tools	(1)
★	37	36-66-4255 Intermediate Pinion	(1)
	38	32-75-2900 Spindle Gear	(1)
	39	06-42-1200 Woodruff Key	(1)
	40	28-14-1795 Gear Case	(1)
	41	02-04-0640 Ball Bearing	(1)
	42	06-95-0150 No. 7x2-3/16" Lg. Pan Hd. Screw	(3)
	43	44-84-0120 Fixed Ratchet	(1)
	44	42-52-0250 Bearing Housing	(1)
	45	44-84-0110 Rotating Ratchet	(1)
	46	06-42-0800 Woodruff Key	(1)
	47	02-04-1560 Ball Bearing	(1)
	48	45-88-7350 Bearing Retainer Washer	(1)
	49	45-88-7360 Spring Support Washer	(1)
	50	38-50-5240 Spindle	(1)
	51	45-22-0405 Sleeve	(1)
	52	45-88-7375 Felt Washer	(1)
	53	40-50-4950 Spring	(1)
	54	42-76-0200 Locking Collar	(1)
	55	14-34-0250 Side Handle Assy. (Incl. Fig. Nos. 56 thru 60)	(1)
	56	43-62-0865 Side Handle	(1)
	57	44-94-0161 Depth Rod	(1)
	58	42-68-0390 Depth Gauge Clamp	(2)
	59	28-82-0150 Handle Ring	(1)
	60	42-32-0160 5/16-18 Square Hd. Bolt	(1)
	61	48-66-1360 1/2" Chuck (Includes Fig. No. 62)	(1)
	62	48-66-3280 Chuck Key	(1)
	63	48-66-4040 Key Holder	(1)

MILWAUKEE ELECTRIC TOOL CORPORATION
13135 W. LISBON RD., BROOKFIELD, WIS. 53005