



SERVICE PARTS LIST

BULLETIN NO.
55-38-0650

SPECIFY CATALOG NO. AND SERIAL NO. WHEN ORDERING PARTS		REVISED BULLETIN	DATE
LARGE PAD ORBITAL SANDER			Nov. '94
CATALOG NO.	6010-4	SERIALNUMBER (FIRST 4 DIGITS)	791A
		WIRING INSTRUCTION	58-03-0475

00 0

EXAMPLE:
Component Parts (Small #) Are Included
When Ordering The Assembly (Large #).

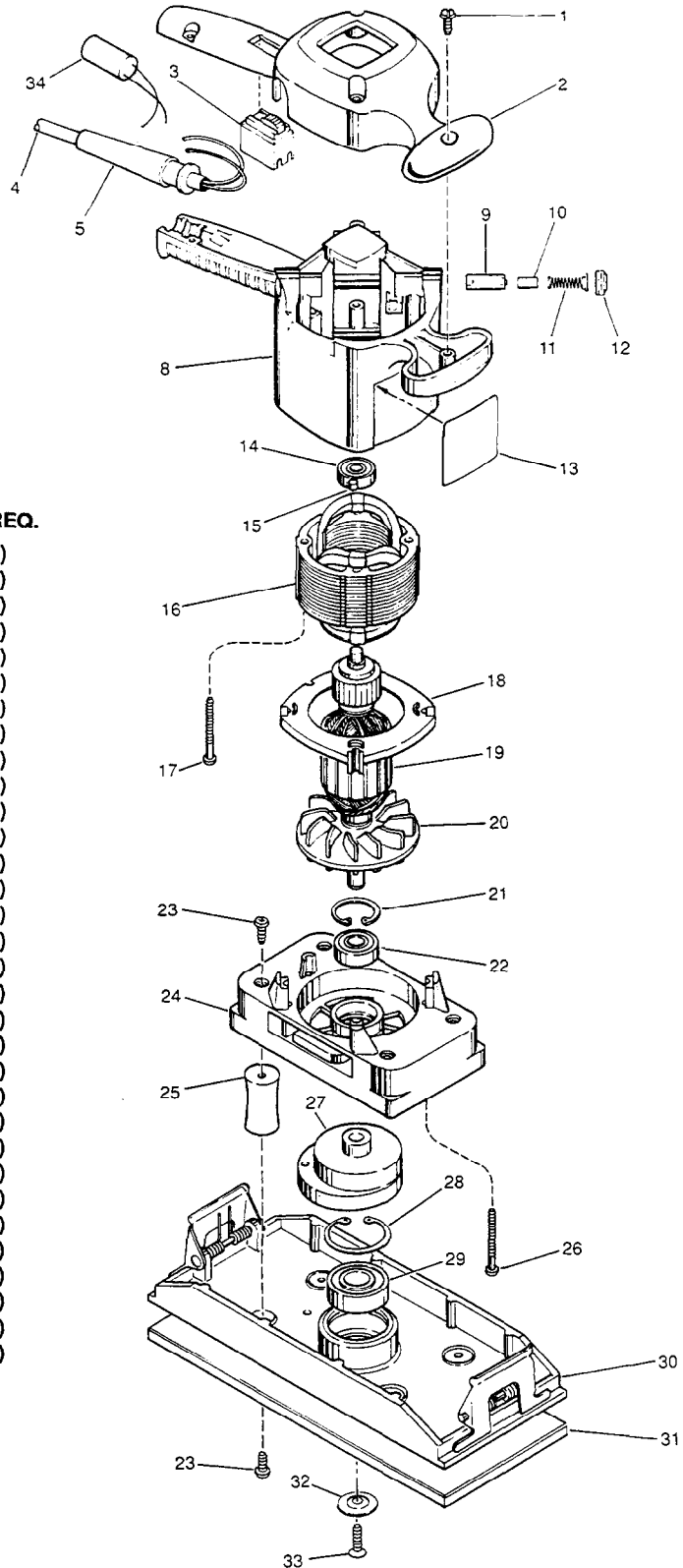


FIG.	PART NO.	DESCRIPTION OF PART	NO. REQ.
1	06-82-7270	8-16 x 5/8" Lg. Plastite Screw T-20	(5)
2	31-15-0150	Housing Cover	(1)
3	23-66-1185	Slide Switch	(1)
4	22-64-4535	Cord Set	(1)
5	44-76-0125	Cord Protector	(1)
8	31-50-0260	Motor Housing	(1)
9	22-20-0420	Brush Tube	(2)
10	22-16-0375	Carbon Brush	(2)
11	23-52-0160	Brush Spring	(2)
12	23-44-0125	Brush Retaining Screw	(2)
13	12-20-0065	Service Nameplate Kit	(1)
14	02-04-0847	Ball Bearing	(1)
15	45-30-0120	Ball Bearing Retaining Slug	(1)
16	18-54-0155	Field	(1)
17	06-82-7382	8-16 Pan Hd. Plastite T-20	(2)
18	31-05-0110	Baffle	(1)
19	16-54-0155	Armature	(1)
20	22-84-0135	Fan	(1)
21	34-80-2210	Beveled Retaining Ring	(1)
22	02-04-1050	Ball Bearing	(1)
23	06-82-9265	10 x 1/2" Lg. AB Thread Screw T-25	(8)
24	28-28-1530	Diaphragm	(1)
25	42-40-0540	Pillar	(4)
26	06-82-7382	8-16 x 1-5/8" Pan Hd. Plast. T-20	(4)
27	43-16-0140	Large Eccentric	(1)
28	34-80-2960	Beveled Retaining Ring	(1)
29	02-04-1747	Ball Bearing	(1)
30	14-67-0220	Platen Assembly	(1)
31	44-52-0480	Pad Assembly	(1)
32	45-88-0840	Special Washer	(1)
33	06-82-0846	10-32 x 3/4" Flat Hd T-25	(1)
34	22-33-0430	Suppressor	(1)

FIG. NOTE:
21,28 Install flat side to bearing .