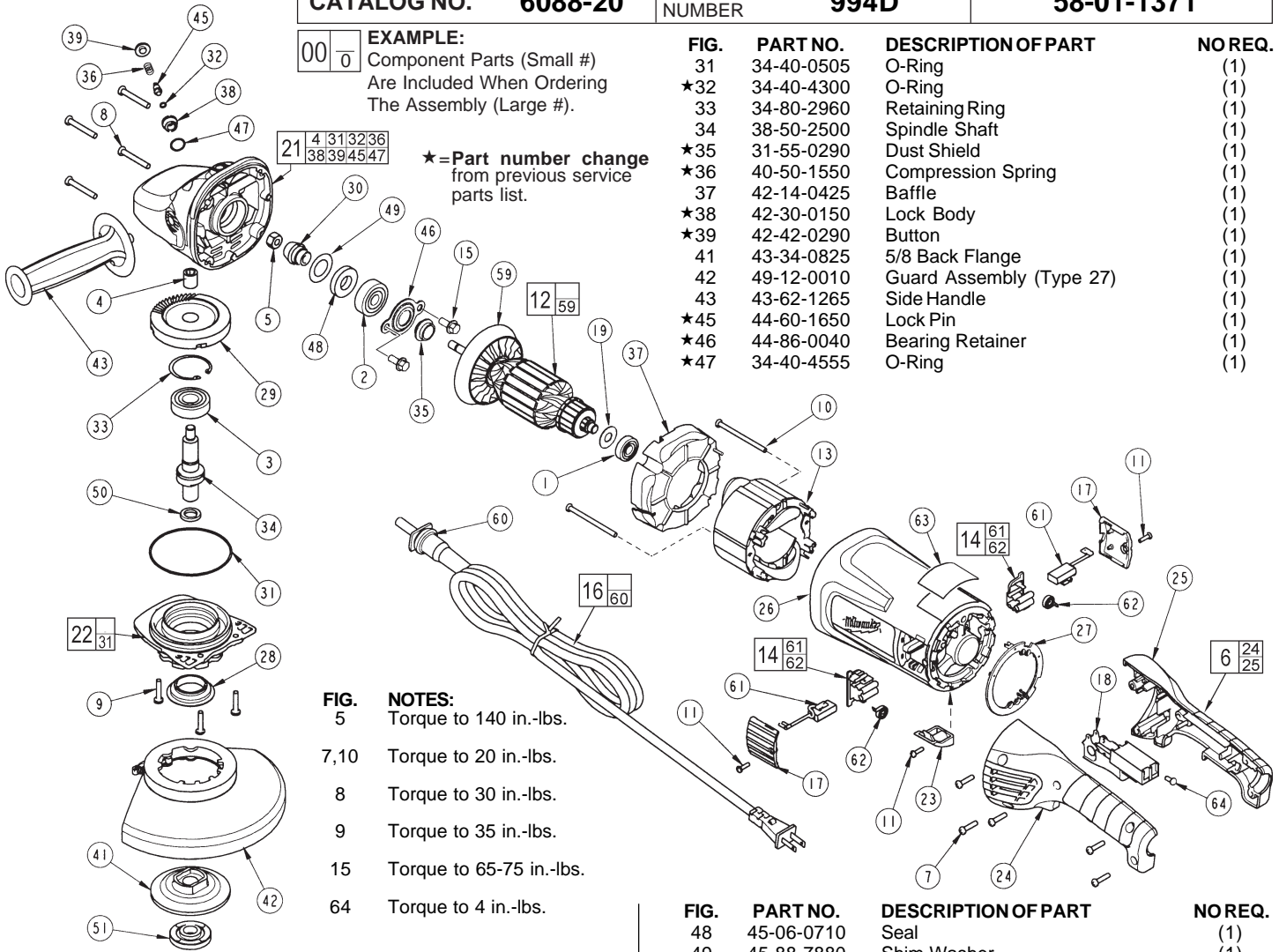




SERVICE PARTS LIST

BULLETIN NO.
54-38-1553

SPECIFY CATALOG NO. AND SERIAL NO. WHEN ORDERING PARTS		REVISED BULLETIN	DATE
7" GRINDER		54-38-1552	Aug. 2007
CATALOG NO.	6088-20	WIRING INSTRUCTION 58-01-1371	
	SERIAL NUMBER	994D	



EXAMPLE:
Component Parts (Small #)
Are Included When Ordering
The Assembly (Large #).

★ = Part number change
from previous service
parts list.

FIG.	PART NO.	DESCRIPTION OF PART	NO REQ.
	31	34-40-0505 O-Ring	(1)
★	32	34-40-4300 O-Ring	(1)
	33	34-80-2960 Retaining Ring	(1)
	34	38-50-2500 Spindle Shaft	(1)
★	35	31-55-0290 Dust Shield	(1)
★	36	40-50-1550 Compression Spring	(1)
	37	42-14-0425 Baffle	(1)
★	38	42-30-0150 Lock Body	(1)
★	39	42-42-0290 Button	(1)
	41	43-34-0825 5/8 Back Flange	(1)
	42	49-12-0010 Guard Assembly (Type 27)	(1)
	43	43-62-1265 Side Handle	(1)
★	45	44-60-1650 Lock Pin	(1)
★	46	44-86-0040 Bearing Retainer	(1)
★	47	34-40-4555 O-Ring	(1)

- FIG. 5 NOTES:**
5 Torque to 140 in.-lbs.
7,10 Torque to 20 in.-lbs.
8 Torque to 30 in.-lbs.
9 Torque to 35 in.-lbs.
15 Torque to 65-75 in.-lbs.
64 Torque to 4 in.-lbs.

FIG.	PART NO.	DESCRIPTION OF PART	NO REQ.
	1	02-04-1675 Ball Bearing	(1)
	2	02-04-1680 Ball Bearing	(1)
	3	02-04-1745 Ball Bearing	(1)
	4	02-50-2429 Needle Bearing	(1)
	5	06-55-2455 Hex Nut	(1)
	6	14-34-0570 Handle Kit	(1)
	7	06-82-0055 8-16 Torx Plastite Screw T-20	(5)
	8	06-82-0060 10-14 Torx Plastite Screw T-25	(4)
	9	06-82-0065 10-32 x 1 Pan Hd. Taptite T-25 Screw	(3)
	10	06-82-0070 8-16 Torx Plastite Screw T-15	(2)
	11	06-82-7240 6-19 x 1/2 Slit. Pan Hd. Plast. T-15	(3)
	12	16-70-0132 Armature Assembly	(1)
	13	18-70-1130 Field	(1)
	14	22-20-0120 Brush Holder Assembly	(2)
★	15	06-75-0510 1/4-20 x .62 Hex Flange Screw	(2)
	16	22-64-3600 Cord Set (Incl. Cord Protector & Terminals)	(1)
	17	23-44-0255 Brush Cover	(2)
	18	23-66-2720 Switch	(1)
★	19	45-06-0830 Bearing Seal	(1)
	21	28-14-1131 Gearcase Assembly	(1)
	22	28-53-0151 Spindle Hub Assembly	(1)
	23	31-15-0166 Cover	(1)
	24	Left Hand Handle Halve	(1)
	25	Right Hand Handle Halve	(1)
★	26	31-50-1785 Motor Housing	(1)
★	27	31-53-0160 Plug	(1)
	28	31-55-0150 Bearing Shield	(1)
	29	32-05-1505 Gear	(1)
	30	32-60-1505 Pinion Gear	(1)

FIG.	PART NO.	DESCRIPTION OF PART	NO REQ.
	48	45-06-0710 Seal	(1)
	49	45-88-7880 Shim Washer	(1)
	50	45-88-8466 5/8-11 Spindle Washer	(1)
	51	49-05-0051 Flange Nut	(1)
	59	22-84-0540 Fan Assembly	(1)
	60	44-76-0325 Cord Protector	(1)
	61	22-18-0126 Carbon Brush Assembly	(2)
	62	Brush Spring	(2)
	63	12-99-5008 Nameplate Blank	(1)
	64	05-78-0305 Switch Screw	(4)
★	23-94-9300	Leadwire Assembly	(1)
★	23-94-9305	Leadwire Assembly	(1)
★	23-94-9310	Leadwire Assembly	(1)
★	23-94-9315	Leadwire Assembly	(1)
	49-96-7205	Spanner Wrench	(1)

FIG. 21 LUBRICATION:
1.25 oz. (35 grams) of Type "Y" grease, No. 49-08-5270 in main gear cavity of gearcase.

29,30 "Y" grease must be applied to all gear teeth.
31,32 Lightly coat o-rings with "Y" grease prior to installation.

FIG. NOTES:
4,21 Press needle bearing flush ±.02 to gearcase boss face.
33 Bevel side of retaining ring away from bearing face.