

SERVICE PARTS LIST

BULLETIN NO.
54-40-0654

SPECIFY CATALOG NO. AND SERIAL NO. WHEN ORDERING PARTS		REVISED BULLETIN	DATE
14" Abrasive Cut-Off Machine		54-40-0653	April 2009
CATALOG NO. 6176-20	STARTING SERIAL NO. 968F	WIRING INSTRUCTION 58-01-0551	

EXAMPLE:
00 0 Component Parts (Small #) Are Included
When Ordering The Assembly (Large #).

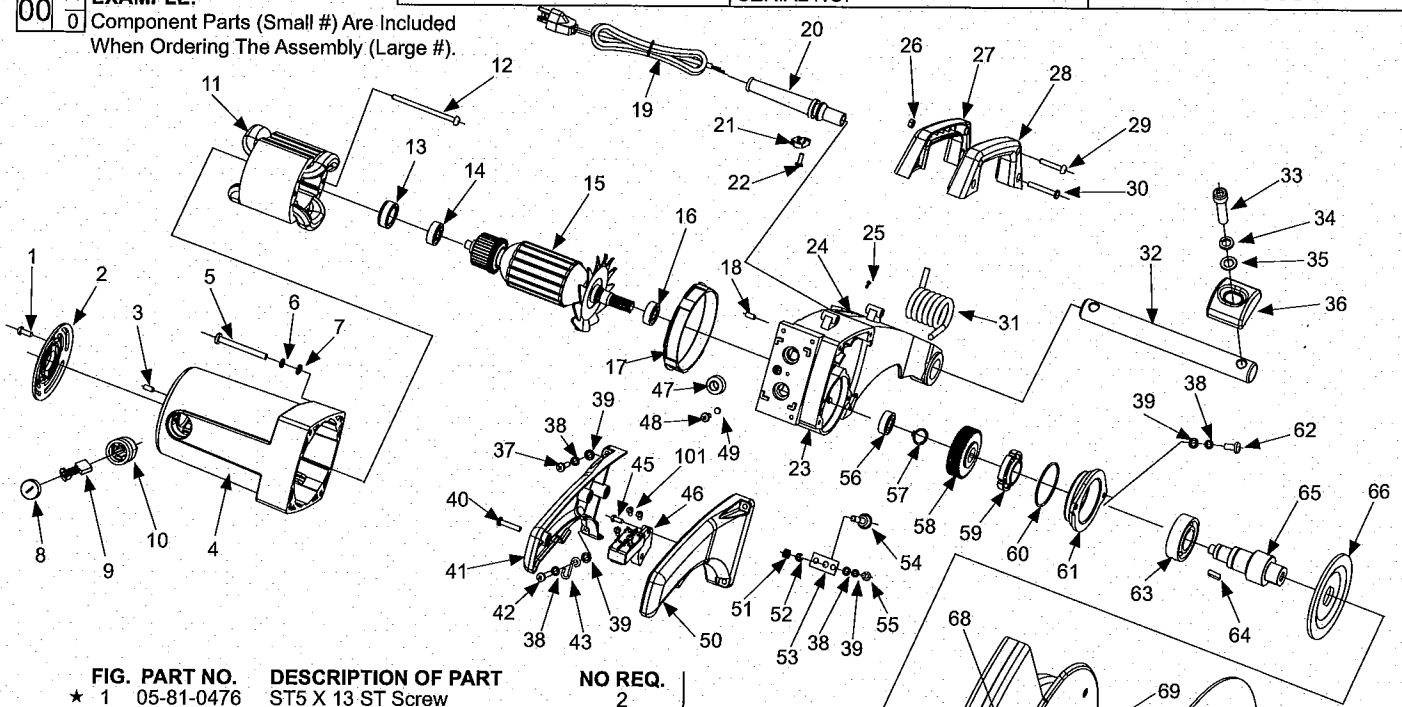


FIG.	PART NO.	DESCRIPTION OF PART	NO REQ.
★	1	05-81-0476 ST5 X 13 ST Screw	2
★	2	31-15-0515 Rear Cover	1
★	3	05-81-0495 M5X10 Clamp Screw	2
★	4	31-50-0025 Motor Housing	1
★	5	05-81-0521 M6 X 60 Pan Head Screw	4
★	6	05-90-0185 M6 Spring Washer	8
★	7	45-88-8495 M6 Washer	8
★	8	22-24-0027 Brush Holder Cap	2
★	9	22-16-0036 Carbon Brush	2
★	10	22-20-0017 Brush Holder	2
★	11	18-82-0100 Field	1
★	12	05-81-0681 ST5 X 80 ST Screw	2
★	13	45-22-0725 Rubber Sleeve	1
★	14	02-04-0016 Bearing	1
★	15	16-82-0200 Armature	1
★	16	02-04-0026 Bearing	1
★	17	31-05-0016 Fan Baffle	1
★	18	44-60-1900 Rubber Pin	1
★	19	22-64-1432 Cord Set	1
★	20	44-76-0061 Cord Protector	1
★	21	44-76-0065 Cord Clamp	1
★	22	05-78-0015 M4X12 Screw	2
★	23	28-50-0020 Gear Case	1
★	24	12-99-3355 Nameplate	1
★	25	06-72-1720 Nameplate Rivet	4
★	26	05-55-0030 Hex Nut 5MM	2
★	27	31-44-0016 Carrying Handle - Left	1
★	28	31-44-0026 Carrying Handle - Right	1
★	29	05-81-0776 ST4 X 22 ST Screw	2
★	30	05-81-0811 M5 X 31 Pan Head Screw	2
★	31	40-50-0115 Torsion Spring	1
★	32	06-65-0015 Hinge Core	1
★	33	05-75-0045 M10X45 Socket Head Bolt	2
★	34	05-90-0175 M10 Spring Lockwasher	4
★	35	45-88-8421 M10 Washer	5
★	36	42-36-0035 Hinge Core Cover	2
★	37	05-81-0522 M5 X 20 Pan Head Screw	3
★	38	05-90-0190 M5 Spring Washer	10
★	39	45-88-8485 M5 Washer	10
★	40	05-81-0791 ST5 X 20 ST Screw	3
★	41	31-44-0038 Operating Handle - Left	1
★	42	05-81-0790 Pan Head Screw M5X25	1
★	43	43-74-0015 Chain Hook	1
★	45	05-78-0426 ST4 X 10 ST Screw	2
★	46	23-66-1060 Switch	1
★	47	44-76-0104 Rubber Protector	2
★	48	05-81-0805 Pan Head Screw M4X10	1
★	49	05-90-0010 Star Washer M4	1
★	50	31-44-0032 Operating Handle - Right	1

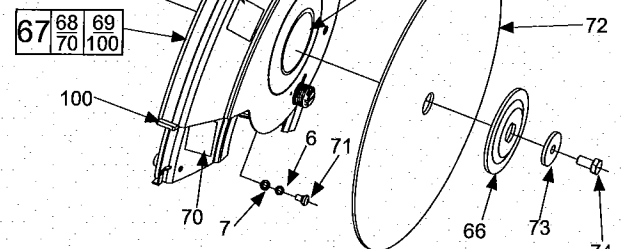


FIG.	PART NO.	DESCRIPTION OF PART	NO REQ.
★	51	40-50-0135 Spring	1
★	52	34-60-0015 M5X0.8 E Clamp	1
★	53	42-36-0056 Locker Plate	1
★	54	44-60-0061 Locking Pin	1
★	55	05-81-0431 M5 X 10 Pan Head Screw	4
★	56	02-04-0036 Bearing	1
★	57	05-92-0056 M17 Retainer	1
★	58	32-75-0016 Gear	1
★	59	42-74-0063 Locking Cog	1
★	60	34-40-0090 O Ring	1
★	61	43-34-0900 Flange	1
★	62	05-81-0120 M5 x 16 Pan Head Screw	2
★	63	02-04-0046 Bearing	1
★	64	05-42-0016 4 x 4 x 12 Key	1
★	65	38-50-0056 Spindle	1
★	66	43-34-0015 Flange	2
★	67	43-54-0015 Safety Cover Assembly	1
★	68	10-20-3055 Warning Label	1
★	69	10-15-6176 Rotation Label	1
★	70	Logo Label	1
★	71	05-81-0441 M6 X 10 Pan Head Screw	4
★	72	Abrasive Wheel	1
★	73	45-88-0015 Flat Washer	1
★	74	05-75-0015 M10X20 Hex Head Screw	3
★	100	Rubber Bumper	1
★	101	05-78-0305 Switch Screw	4
		23-74-2430 Terminal	1
		23-74-0840 Terminal	1

SEE BACK PAGE FOR SERVICE AND LUBRICATION NOTES

MILWAUKEE ELECTRIC TOOL CORPORATION

13135 W. LISBON RD., BROOKFIELD, WI 53005

Drwg. 4

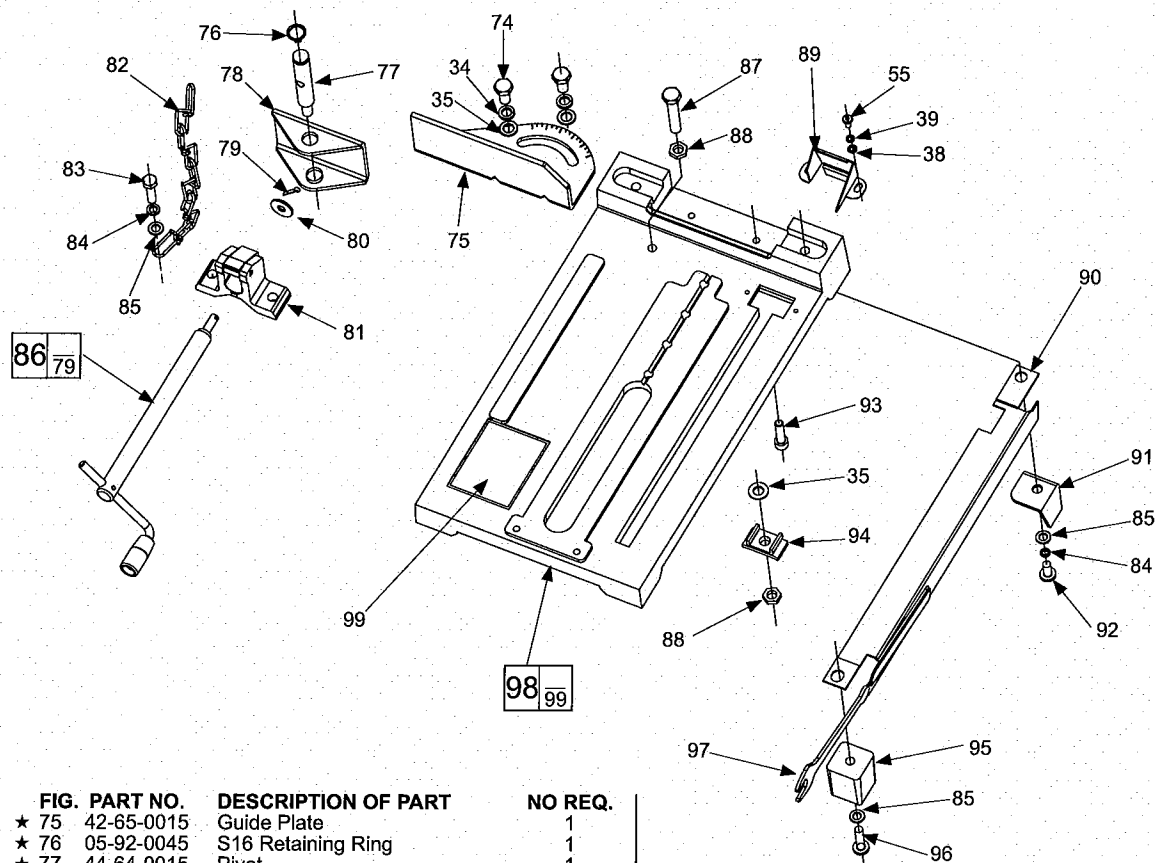


FIG. PART NO.	DESCRIPTION OF PART	NO REQ.
★ 75	42-65-0015 Guide Plate	1
★ 76	05-92-0045 S16 Retaining Ring	1
★ 77	44-64-0015 Pivot	1
★ 78	44-66-0015 Vise Plate	1
★ 79	06-65-0017 3.2 X 18 Opening Clip	1
★ 80	45-88-0745 8X16X0.6 Washer	1
★ 81	44-40-0015 Vise	1
★ 82	42-60-0025 Chain	1
★ 83	05-75-0026 M8 X 30 Hex Head Bolt	2
★ 84	05-90-0030 Spring Washer M8	3
★ 85	45-88-0025 8X16X1 Washer	6
★ 86	45-84-0017 Turning Handle Set	1
★ 87	05-75-0035 M10X55 Hex Head Bolt	1
★ 88	05-55-0015 M10 X 17 Nut	2
★ 89	43-54-0045 Chip Protector	1
★ 90	43-77-0020 Wrench Holder	1
★ 91	44-04-0015 Iron Foot	1
★ 92	05-81-0905 M8X16 Pan Head Screw	1
★ 93	05-75-0030 M 8x30 Bolt	2
★ 94	42-68-0025 Vise Guide	1
★ 95	44-34-0015 Rubber Foot	3
★ 96	05-81-0900 M8 X 30 Pan Head Screw	3
★ 97	51-96-6176 Bulk Spanner Wrench	1
★ 98	31-06-0015 Base	1
★ 99	10-15-0425 Warning Label	1

FIG. LUBRICATION:
23 Place 1 to 1.25 ounces (28 - 35 grams) of Type "Y" Grease, No. 49-08-5270, in the gear cavity of the gear case.

NOTES:
16 Seal to face spindle gear.
14 Seal to face armature.
13 Place in motor housing prior to inserting armature.