



SERVICE PARTS LIST

BUL. 54-40-2550

16" or 20" CHAIN SAW

REVISED BUL. DATE
FEB '78

Catalog No.

**6210
6211**

Starting
Serial No. **571-1001**

WIRING INSTRUCTIONS
58-01-0325

Specify Catalog and Serial No. when ordering parts

FOR CAT. NOS. 6210-2 and
6211-2 (240V) TOOL USE:

18-76-0015 FIELD
16-76-0120 ARMATURE
22-64-4000 CORD SET

Unless otherwise specified, parts
shown are common to 6210 & 6211
tools.

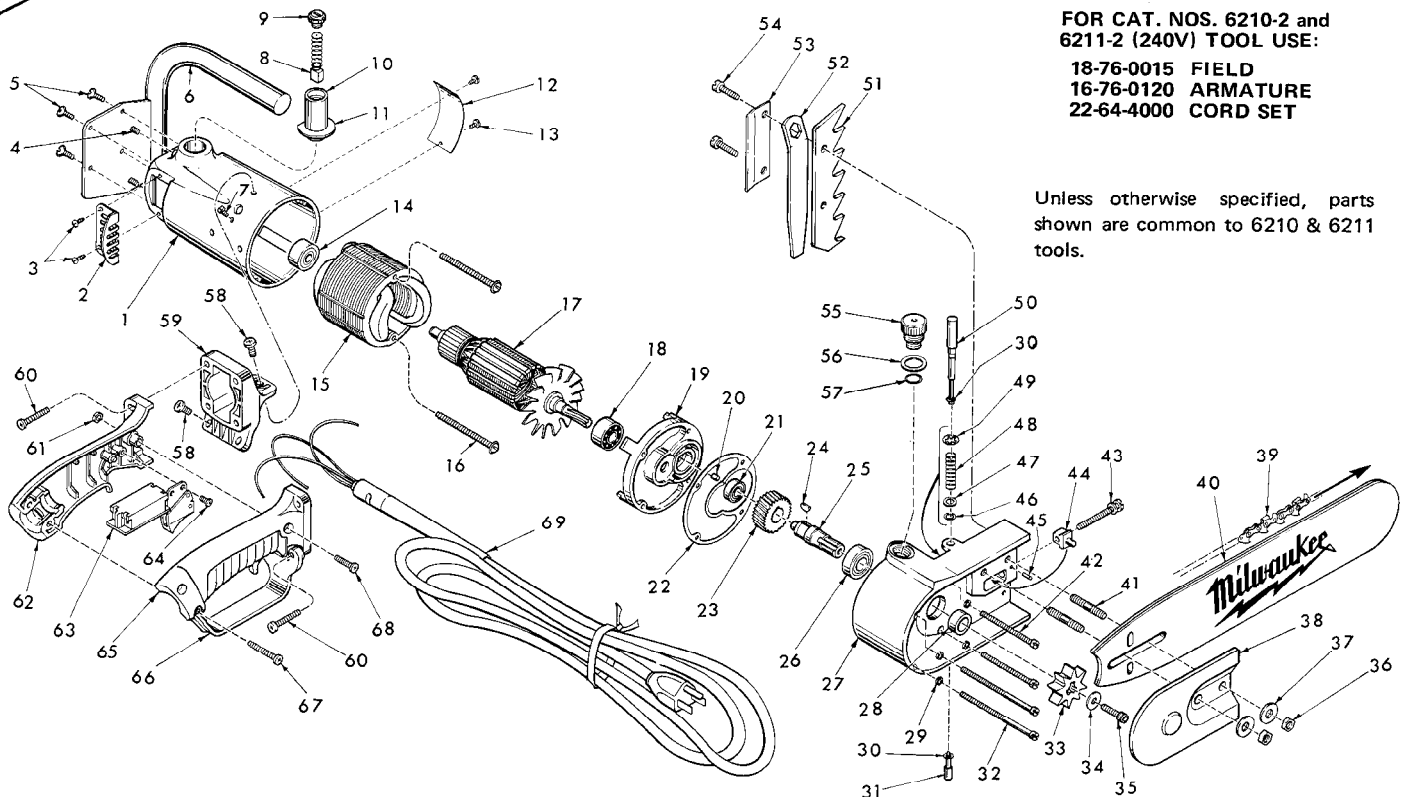


FIG.	PART NO.	DESCRIPTION OF PART	NO. REQ.
1	28-50-4695	Motor Housing	(1)
2	44-66-0105	Cover Plate	(1)
3	06-81-8650	6-32x1/4 Rd. Hd. Sem	(2)
4	06-83-2725	1/4-28x3/8 Set Screw	(2)
5	06-81-3625	12-28x1/2 Oval Hd. Screw	(4)
6	43-62-0175	Handle Assembly	(1)
7	06-81-9125	10-24x1/4 Ground Sem	(1)
8	22-18-0055	Carbon Brush	(2)
9	23-44-0030	Brush Retaining Screw	(2)
10	22-22-1015	Brush Holder	(2)
11	23-86-0060	Insulating Washer	(2)
12	12-99-0032	Nameplate Blank	(1)
13	06-85-0200	6x1/4 Rd. Hd. Screw	(2)
14	02-04-1070	Ball Bearing	(1)
15	18-70-0015	120V Field	(1)
16	06-81-9200	10-24x2-1/2 Rd. Hd. Sem	(2)
17	16-70-0120	120V Armature	(1)
18	02-04-1260	Ball Bearing	(1)
19	28-28-0781	Diaphragm	(1)
20	45-30-0070	Bearing Retaining Slug	(1)
21	02-04-0910	Ball Bearing	(1)
22	43-44-0060	Gasket	(1)
23	32-75-1681	Spindle Gear	(1)
24	06-42-2000	Woodruff Key	(1)
25	38-50-3001	Spindle	(1)
26	02-04-1640	Ball Bearing	(1)
27	28-14-0803	Gear Case	(1)
28	45-36-0150	Sprocket Spacer	(1)
29	06-97-3400	Lock Washer	(4)
30	34-60-0100	O-Ring	(2)
31	31-94-0010	Lower Valve	(1)
32	06-81-4620	10-24x3-1/2 Rd. Hd. Screw	(2)
33	45-44-0080	Sprocket	(1)
34	45-88-0231	Steel Washer	(1)
35	06-75-3000	1/4-20x5/8 L.H. Skt. Hd. Screw	(1)
36	06-55-2500	3/8-16 Hex Nut	(2)
37	45-88-5261	Flat Washer	(2)

FIG.	PART NO.	DESCRIPTION OF PART	NO. REQ.
38	28-20-9050	Sprocket Cover	(1)
39	48-58-0016	16" Chipper Chain (For Cat. No. 6210)	(1)
	48-58-0020	20" Chipper Chain (For Cat. No. 6211)	(1)
40	48-09-5016	16" Guide Bar (For Cat. No. 6210)	(1)
	48-09-5020	20" Guide Bar (For Cat. No. 6211)	(1)
41	06-92-1000	3/8-16x1-1/2 Stud	(2)
42	06-81-4595	10-24x2-1/2 Rd. Hd. Screw	(2)
43	45-04-0110	Chain Adjusting Screw	(1)
44	44-40-0235	Chain Adjusting Nut	(1)
45	06-65-0830	1/8x1/2 Groove Pin	(1)
46	34-40-3000	O-Ring	(1)
47	45-88-0215	Flat Washer	(1)
48	40-50-2200	Compression Spring	(1)
49	34-60-0560	Push On Retaining Ring	(1)
50	31-54-0010	Pump Shaft	(1)
51	42-38-0060	Bumper	(1)
52	49-96-6200	9/16" Wrench (For Fig. Nos. 36 & 43)	(1)
53	42-70-0070	Wrench Clip	(1)
54	06-81-7800	1/4-20x3/4 Fil. Hd. Sem	(2)
55	42-92-0060	Oil Filler Cover	(1)
56	43-44-0070	Gasket	(1)
57	34-40-1000	O-Ring	(1)
58	06-81-0495	1/4-20x9/16 Phil. Pan Hd. Screw	(3)
59	31-10-0200	Handle Mount	(1)
60	06-95-0355	10-14x1-1/8 Pan Hd. Thread Form Screw	(4)
61	06-55-1000	10-24 Hex Nut	(2)
62	31-44-0595	Left Handle Half	(1)
63	23-66-0355	Switch	(1)
64	06-95-0215	8-18x1/2 Pan Hd. Thread Form Screw	(1)
65	31-44-0580	Right Handle Half	(1)
66	31-43-0050	Trigger Guard	(1)
67	06-95-0360	10-14x1-3/8 Pan Hd. Thread Form Screw	(1)
68	06-81-4207	10-24x7/8 Phil. Pan Hd. Screw	(2)
69	22-64-0105	Cord Set	(1)
70	06-97-1800	Switch Lockwasher (Not Shown)	(4)
71	10-98-5970	Caution Label (Not Shown)	(1)