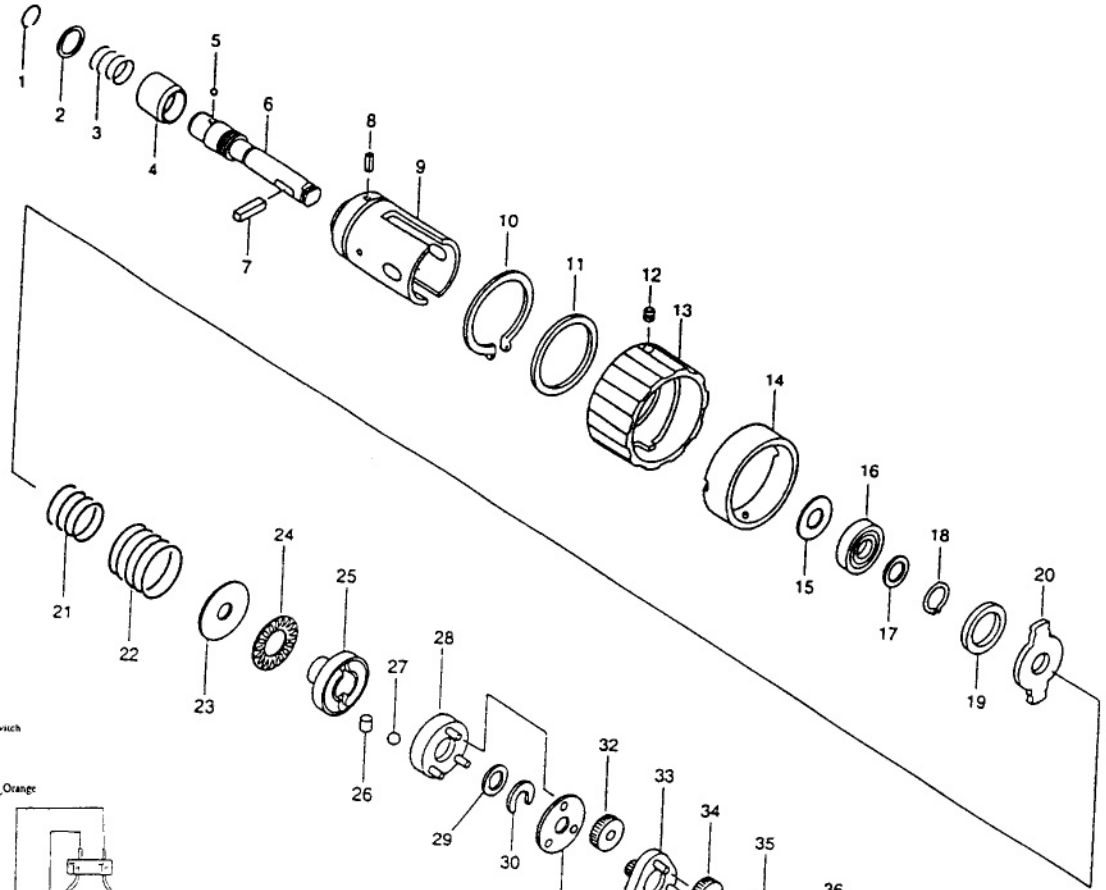


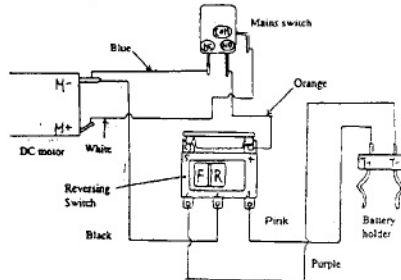


CORDLESS SCREWDRIVER

MODEL 6705D
MODEL 6705DW



WIRING DIAGRAM



IMPORTANT — To assure product **SAFETY** and **RELIABILITY**, repairs, maintenance or adjustments should be performed by **MAKITA** Service Centers or other qualified service organizations. Always use **MAKITA** replacement parts.

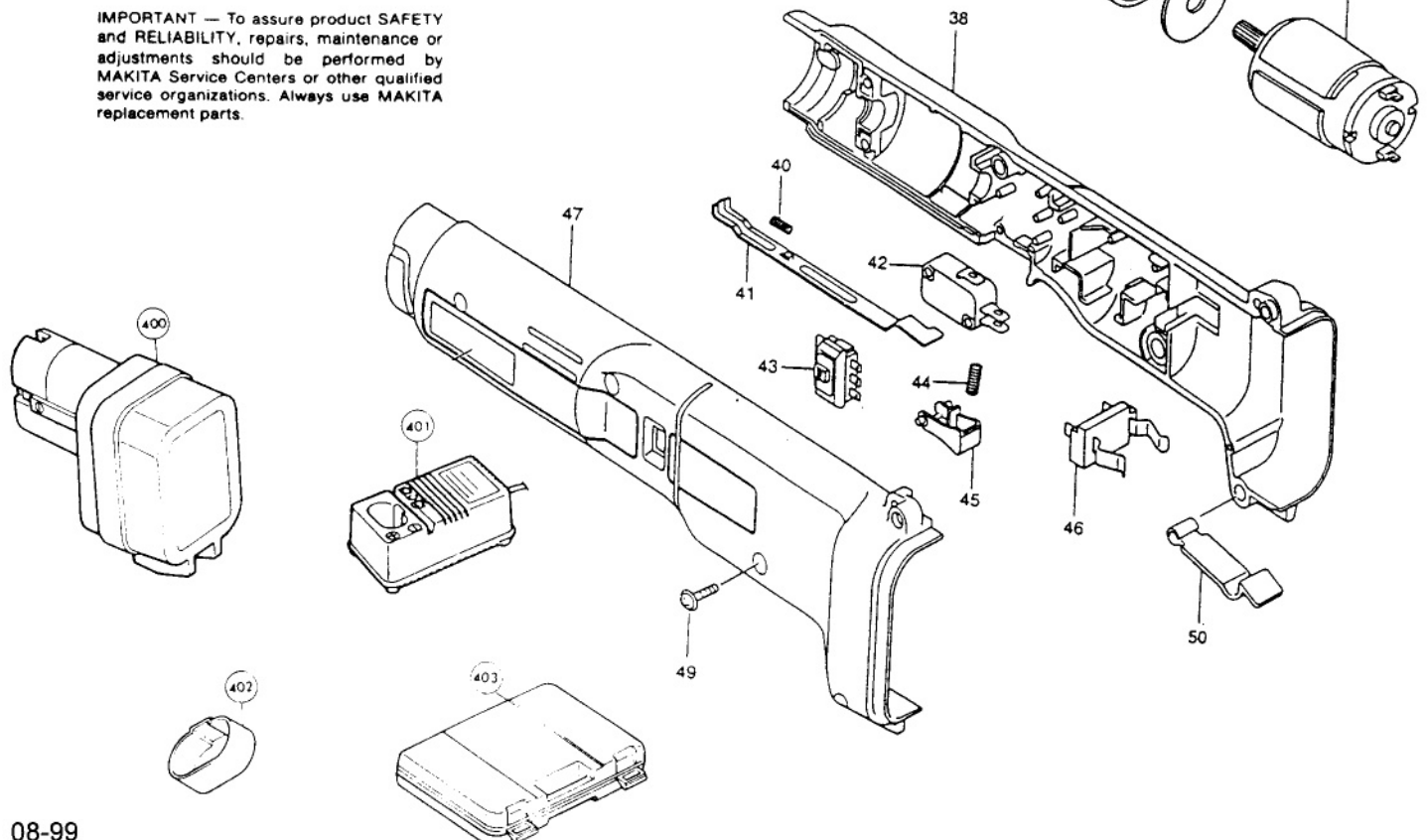


Fig.	Part No.	Qty. Used	Description	Fig.	Part No.	Qty. Used	Description
1	231951-8	1	RING SPRING 11	30	343945-2	1	(U) PLATE
2	267085-1	1	FLAT WASHER 12	31	343896-9	1	PLATE
3	233005-7	1	COMPRESSION SPRING 13	32	226204-8	3	SPUR GEAR 28
4	322434-0	1	SLEEVE	33	153196-7	1	SPUR GEAR 11 COMPLETE
5	216001-0	2	STEEL BALL 3.5	34	226204-8	3	SPUR GEAR 28
6	322681-3	1	SPINDLE	35	226205-6	1	INTERNAL GEAR 67
7	254235-7	1	KEY 4	36	267067-3	1	FLAT WASHER 12
8	258002-2	2	SPRING PIN 3-6	37	629624-9	1	DC MOTOR 9.6V (INCL. 1 EA. SPUR GEAR 11 226235-7)
9	322980-3	1	HEAD	38	183057-7	1	HOUSING SET (INCL. FIG. 47,48)
10	961172-5	1	RETAINING RING S-34	40	233025-1	1	COMPRESSION SPRING 2
11	267093-2	1	FLAT WASHER 34	41	343898-5	1	LEVER
12	266025-6	2	SCREW M4X6	42	651942-7	1	SWITCH V15-1A6-IN
13	415444-5	1	CHANGE RING	43	651872-2	1	SWITCH C3BC-B01
14	152406-9	1	LOCK SLEEVE COMPLETE	44	233024-3	1	COMPRESSION SPRING 4
15	253171-4	1	FLAT WASHER 10	45	414752-1	1	SWITCH LEVER
16	211061-7	1	BALL BEARING 6000LLB	46	643909-9	1	BATTERY HOLDER
17	267047-9	1	FLAT WASHER 10	47	183057-7	1	HOUSING SET (INCL. FIG. 38,48)
18	961006-2	1	RETAINING RING S-10	49	911143-2	6	PAN HEAD SCREW M4X22
19	257101-7	1	RING 18	50	344798-2	1	SET PLATE
20	343897-7	1	SLIDE PLATE	<u>ACCESSORIES</u>			
21	233093-4	1	COMPRESSION SPRING 13	400	192019-4	1	BATTERY 9100
22	233094-2	1	COMPRESSION SPRING 18	401	113103-2	1	FAST CHARGER DC9700
23	267024-1	1	FLAT WASHER 12	402	414938-7	1	BATTERY COVER
24	216402-2	1	THRUST N. GAUGE 1224	403	182439-A	1	PLASTIC TOOL CASE
25	322493-4	1	RETAINER				
26	256217-5	2	PIN 4				
27	216013-3	2	STEEL BALL 6				
28	152399-0	1	HOLDER COMPLETE				
29	253998-2	1	LOCK WASHER 10				