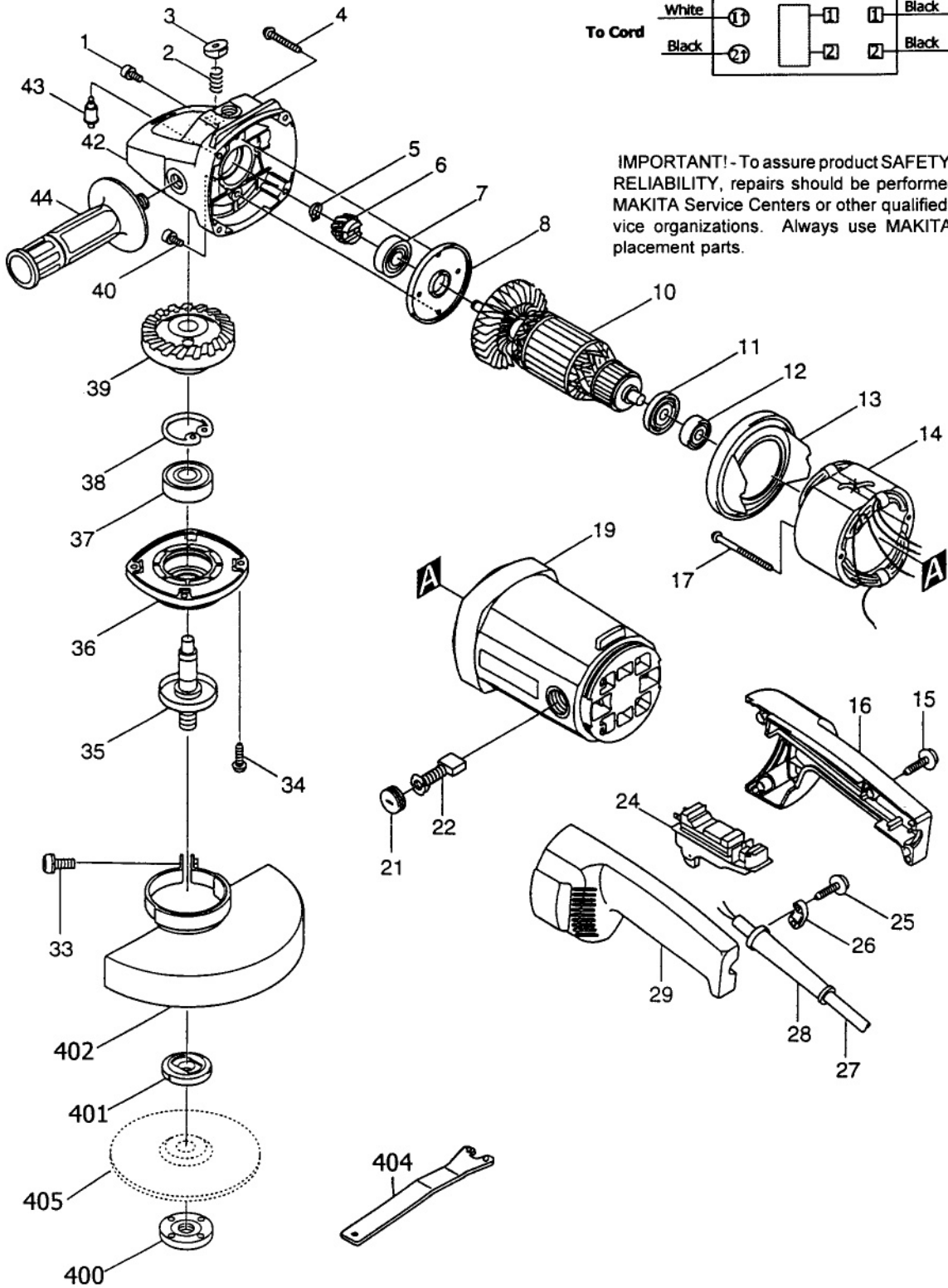
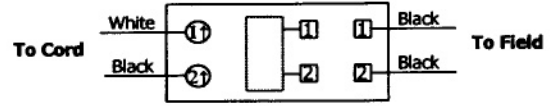




9" (230mm) Angle Grinder Model 9069



WIRING DIAGRAM



IMPORTANT! - To assure product SAFETY and RELIABILITY, repairs should be performed by MAKITA Service Centers or other qualified service organizations. Always use MAKITA replacement parts.

Fig.	Part No.	Qty. Used	Description	Fig.	Part No.	Qty. Used	Description
1	265976-0	1	HEX. SOCKET HEAD BOLT M5X10	25	265995-6	2	TAPPING SCREW 4X18
2	233089-5	1	COMPRESSION SPRING 12	26	687052-4	1	STRAIN RELIEF
3	416449-8	1	PIN CAP	27	664463-0	1	POWER SUPPLY CORD
4	266012-5	4	TAPPING SCREW FLANGE, 5X35	28	682505-8	1	CORD GUARD 10-90
5	961005-4	1	RETAINING RING S-9	29	183029-2	1	HANDLE SET (INCL. FIG. 16)
6	226772-1	1	SPRIAL BEVEL GEAR 12	33	265050-4	4	PAN HEAD SCREW M8X25
7	211132-0	1	BALL BEARING 6301DDW	34	266027-2	4	TAPPING SCREW CT5X16
8	285688-9	1	BEARING RETAINER 57	35	152607-9	1	SPINDLE COMPLETE (INCL. LABYRINTH RING, 344611-4)
10	516771-4	1	ARMATURE ASS'Y 115V (INCL. FIG. 11, 12)	36	317007-2	1	BEARING BOX
11	681630-2	1	INSULATION WASHER	37	211278-2	1	BALL BEARING 6203DDW
12	211087-9	1	BALL BEARING 6200DDW	38	962157-4	1	RETAINING RING R-40
13	416472-3	1	BAFFLE PLATE	39	226771-3	1	SPIRAL BEVEL GEAR 50
14	526071-4	1	FIELD ASS'Y 115V(INCL. 2 EA. RECEPTABLE, 654098-5)	40	265976-0	1	HEX. SOCKET HEAD BOLT M5X10
15	265999-8	4	TAPPING SCREW FLANGE 4X25	42	150968-1	1	GEAR HOUSING COMPLETE
16	183029-2	1	HANDLE SET (INCL. FIG. 29)	43	256452-5	1	PIN 8
17	266044-2	2	TAPPING SCREW FLANGE PT 5X60	44	152539-0	1	GRIP 36 COMPLETE
19	150969-9	1	MOTOR HOUSING COMPLETE (INCL 2 EA. BRUSH HOLDER, 643707-1)	Accessories			
21	643700-5	2	BRUSH HOLDER CAP 7-18	400	224509-0	1	LOCK NUT 5/8-40
22	191957-7	1	A.C. CARBON BRUSH CB-204	401	224317-9	1	INNER FLANGE 89
24	651143-7	1	SWITCH	402	164879-4	1	WHEEL COVER 230
				404	782412-6	1	LOCK NUT WRENCH 28
				405	741421-4	1	9" DEPRESSED CENTER WHEEL