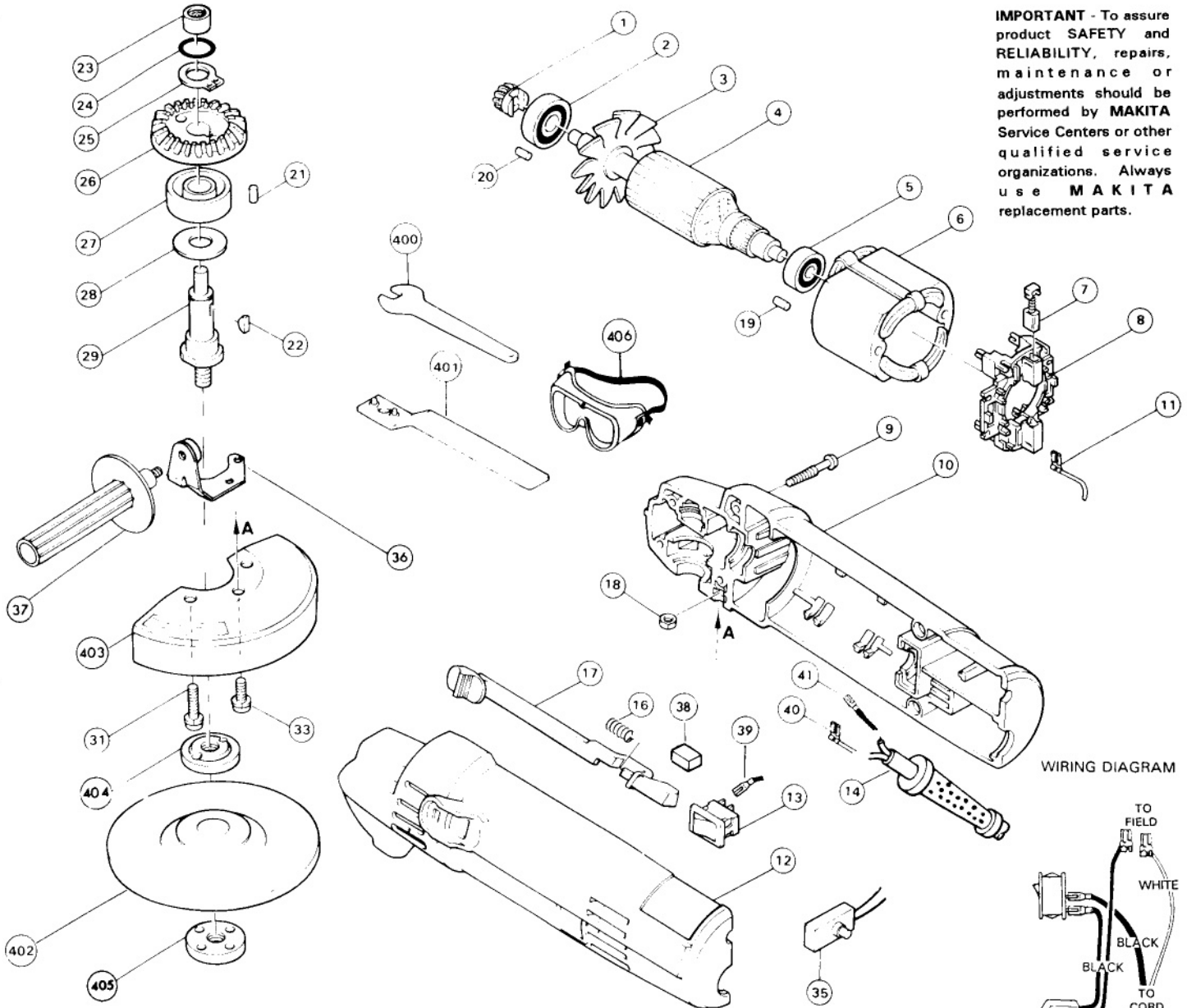


IMPORTANT - To assure product **SAFETY** and **RELIABILITY**, repairs, maintenance or adjustments should be performed by **MAKITA** Service Centers or other qualified service organizations. Always use **MAKITA** replacement parts.



WIRING DIAGRAM

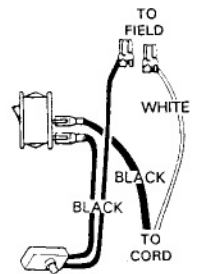


Fig.	Part No.	Qty. Used	Description	Fig.	Part No.	Qty. Used	Description
1	221374-8	1	SPIRAL BEVEL GEAR 11	25	961052-5	1	RETAINING RING S-12
2	211088-7	1	BALL BEARING 6000DDW	26	221375-6	1	SPIRAL BEVEL GEAR 36
3	241068-9	1	FAN	27	211108-7	1	BALL BEARING 6201LB
4	611776-0	1	ARMATURE (INCL. FIG. 2-5)	28	253055-6	1	FLAT WASHER 12
5	211026-9	1	BALL BEARING 627LLB	29	*	1	SPINDLE
6	633016-6	1	FIELD	31	911231-5	2	PAN HEAD SCREW M5X20
7	643070-2	2	CARBON BRUSH (CB-70)	33	**	1	PAN HEAD SCREW M5X12
8	632072-3	1	BRUSH RING	35	652638-3	1	OVER CURRENT RELAY
9	265875-6	6	TAPPING SCREW BIT 4X25	36	164329-9	1	GRIP HOLDER
10	**	1	HOUSING SET (INCL. FIG. 12)	37	273485-5	1	GRIP 26
11	654069-2	1	RECEPTACLE	38	**	1	SPONGE SHEET
12	**	1	HOUSING SET (INCL. FIG. 10)	39	654079-9	2	RECEPTACLE
13	651514-8	1	SWITCH	40	654086-2	1	RECEPTACLE
14	***	1	CORD (WITH STRAIN RELIEF)	41	654109-6	1	RECEPTACLE
16	231223-1	1	COMPRESSION SPRING 6	ACCESSORIES			
17	**	1	SWITCH LEVER	400	781007-2	1	WRENCH 14
18	***	1	HEX NUT M5	401	782401-1	1	LOCK NUT WRENCH 20
19	***	1	RUBBER PIN 4	402	741402-8-1	1	DEPRESSED CENTER WHEEL
20	***	1	RUBBER PIN 4	403	342554-4	1	WHEEL COVER
21	***	1	RUBBER PIN 6	404	*	1	INNER FLANGE
22	254002-0	1	WOODRUFF KEY 3	405	*	1	LOCK NUT
23	212005-0	1	NEEDLE BEARING 810	406	191686-2	1	SAFETY GOGGLES
24	213105-9	1	O RING 11				

SERVICE CHANGE

- 1) Change on Inner Flange and Lock Nut. Type 2 from serial number 218,912E, and Type 3 from serial number 1001.

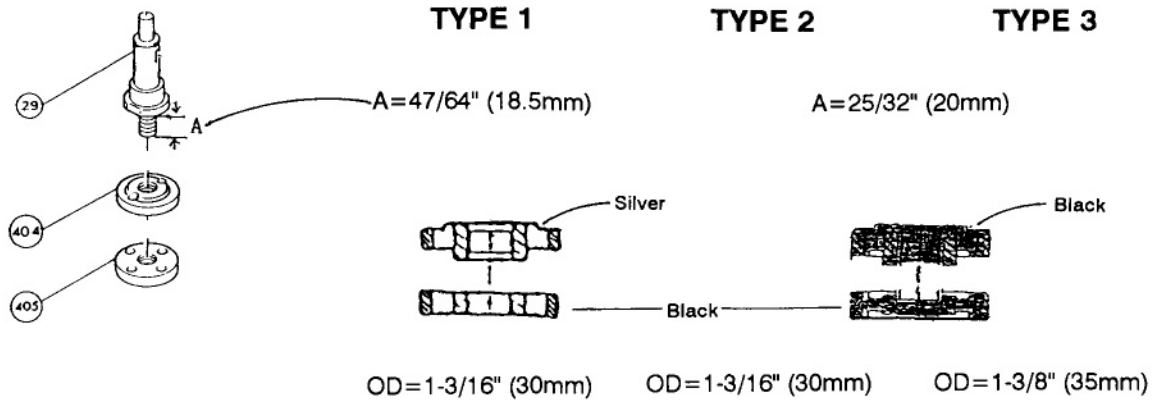


FIG.	DESCRIPTION	TYPE 1	TYPE 2	TYPE 3
29	Spindle	Part #322132-6 (Discontinued)	Part #322424-3	
404	Inner Flange	Part #224229-6	Part #224278-3	Part #224291-1
405	Lock Nut	Part #224503-2	Part #224541-4	Part #224545-6

The above parts are interchangeable as a set, except the Flex Wheel uses Type 2 Flange and Lock Nut. Sanding Disc use Part #224501-6. Use Type 3 for Grinding Wheel and multi disc applications.

- 2) Change on Housing

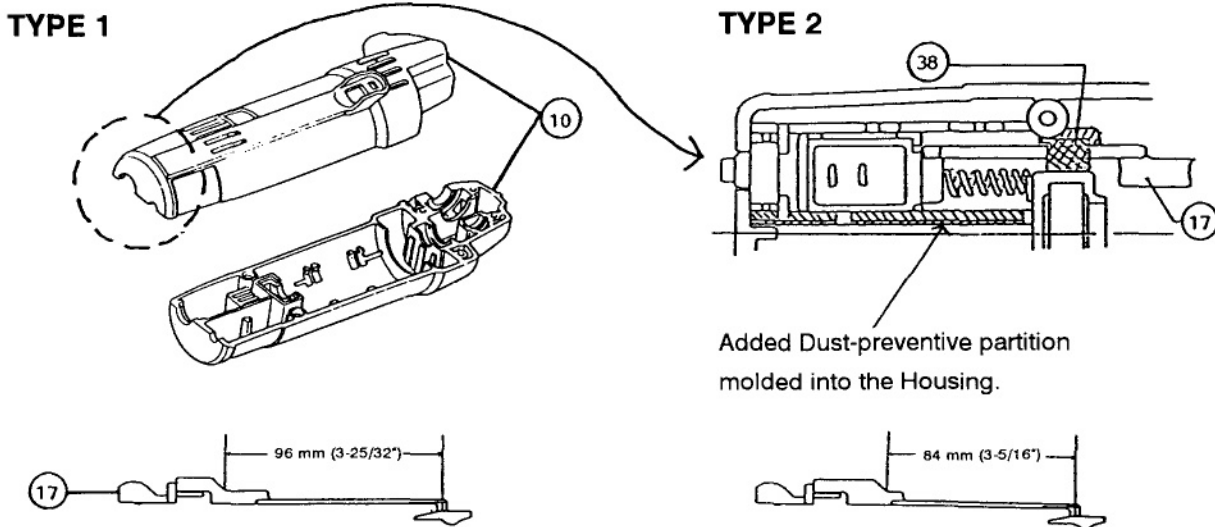


FIG.	DESCRIPTION	TYPE 1	TYPE 2
10/12	Housing Set	Part #181991-5 (Discontinued)	Part #182243-7 See Service Change 3
17	Switch Lever	Part #414030-9 (Discontinued)	Part #414618-5
38	Sponge Sheet	-----	Part #423197-2

Type 2 Housing and Switch Lever replaces Type 1 parts individually.

- 3) Change on Housing from Serial Number 1001. (**NOTE:** There is no "E" at the end of the Serial Number).

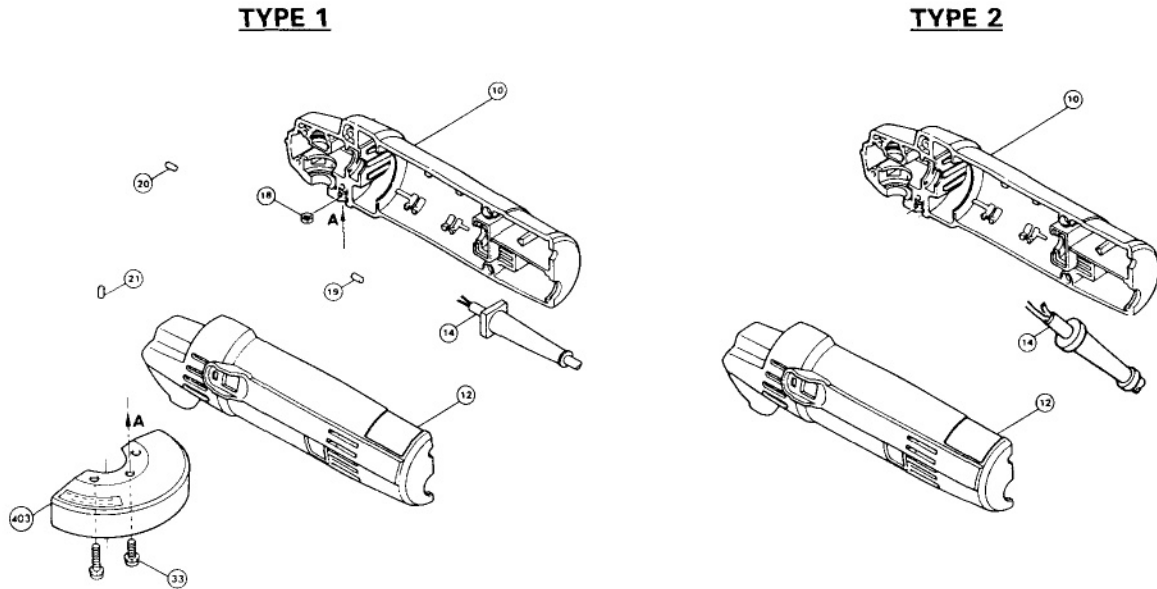


FIG.	DESCRIPTION	TYPE 1	TYPE 2
14	Power Cord	Part #664422-4	Part #664425-8
10/12	Housing Set	Part #182243-7	Part #182465-9 (Includes Fig. 18 -21)
18	Hex Nut	Part #931202-6	
19	Rubber Pin	Part #263002-9	
20	Rubber Pin	Part #263002-9	
21	Rubber Pin	Part #263005-3	
33	P. H. Screw M5x12	Part #911211-1	-----

The above parts are interchangeable as a set.