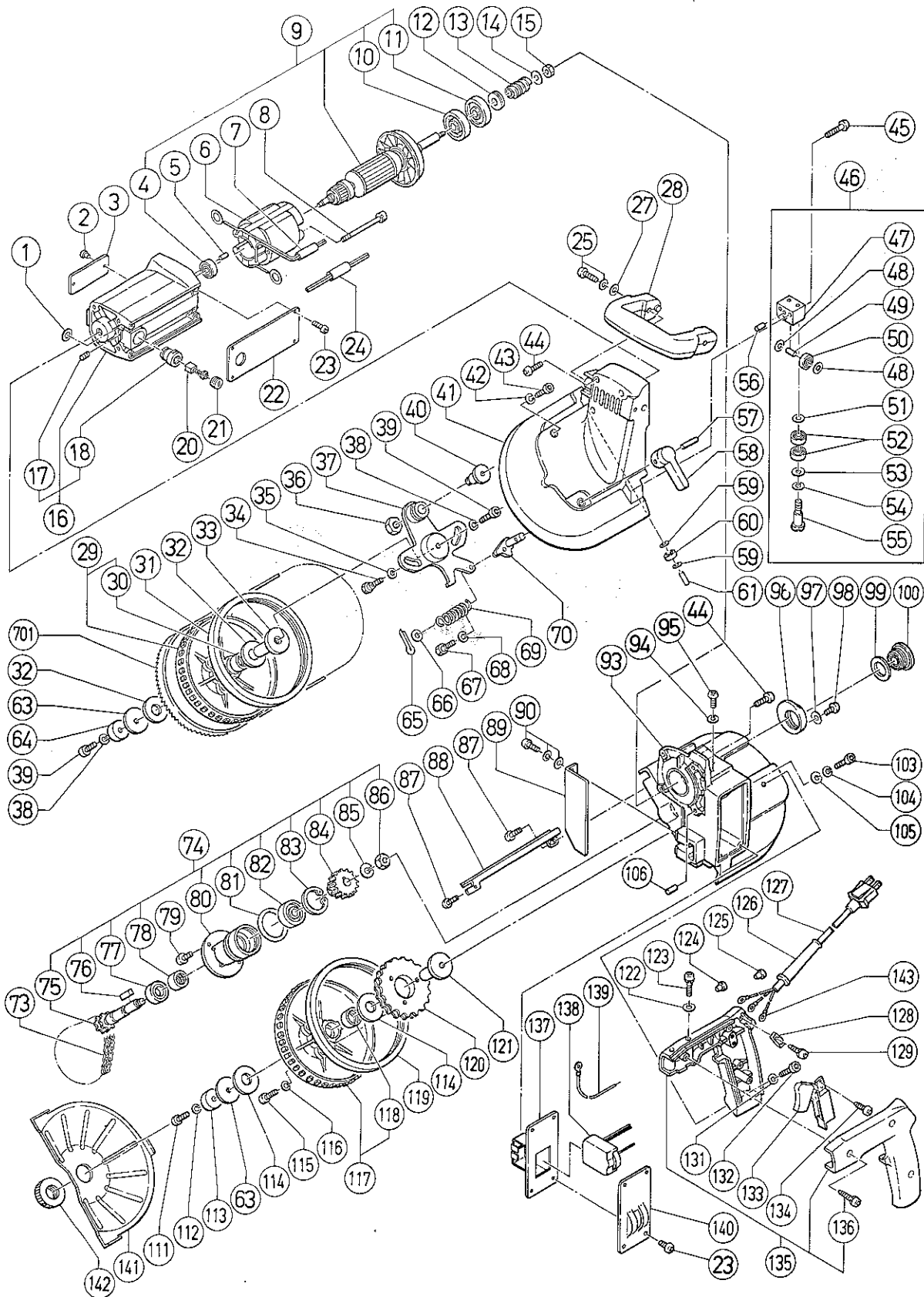


ELECTRIC TOOL PARTS LIST

■ ROTARY BAND SAW**Model CB 10VA****1990·2·20****CB 10VA(EI)**

PARTS

CB 10VA

ITEM NO.	CODE NO.	DESCRIPTION	NO. USED	REMARKS
1	977-072	STOP PLATE	2	
2	949-510	RIVET D2.5X4.8 (10 PCS.)	2	
3		NAME PLATE	1	
4	608-VVM	BALL BEARING 608VVMC2EPS2L	1	
5	976-441	BEARING LOCK	1	
6	340-035J	STATOR 115V	1	
7		TUBE(ID.10XT0.25X50)	1	
8	986-300	MACHINE SCREW (W/SP.WASHER) M4X65	2	
9	360-173U	ARMATURE ASS'Y 115V	1	INCLUD.4,10,11
10	977-092	OIL SEAL	1	
11	630-0VV	BALL BEARING 6300VVCMV2S	1	
12	977-141	SCREW (B)	1	
13	977-094	WORM	1	
14	949-433	BOLT WASHER M8 (10 PCS.)	1	
15	949-568	LOCK NUT M8 (10 PCS.)	1	
16	302-534	HOUSING ASS'Y	1	INCLUD.17,18
17	977-089	HEX. SOCKET SET SCREW M4X8	2	
18	977-088	BRUSH HOLDER	2	
20	999-021	CARBON BRUSH (1 PAIR)	2	
21	994-563	BRUSH CAP	2	
22	302-170	PANEL (A)	1	
23	949-215	MACHINE SCREW M4X8 (10 PCS.)	8	
24		TUBE(ID.8XT0.25X50)	2	
25	994-562	MACHINE SCREW (W/SP.WASHER) M6X25	2	
27	967-329	WASHER (H)	2	
28	977-122	GRIP	1	
29	977-107	SAW WHEEL ASS'Y	1	INCLUD.30
30	977-101	NEEDLE BEARING	2	
31	977-110	SAW WHEEL RUBBER	1	
32	977-108	PLASTIC WASHER	2	
33	977-105	SAW SHAFT	1	
34	977-117	COVER SCREW (A)	2	
35	973-040	THRUST WASHER	4	
36	935-713	NUT	1	
37	977-115	ARM	1	
38	949-455	SPRING WASHER M6 (10 PCS.)	2	
39	949-660	HEX. SOCKET HD. BOLT M6X20 (10 PCS.)	2	
40	977-116	ARM SHAFT	1	
41	302-535	SAW COVER (B)	1	
42	949-455	SPRING WASHER M6 (10 PCS.)	1	
43	949-660	HEX. SOCKET HD. BOLT M6X20 (10 PCS.)	1	
44	949-243	MACHINE SCREW M5X25 (10 PCS.)	6	
45	949-245	MACHINE SCREW M5X30 (10 PCS.)	4	
46	997-800	BEARING HOLDER ASS'Y	2	INCLUD.47-55
47		BEARING HOLDER	2	
48	949-429	BOLT WASHER M4 (10 PCS.)	4	
49	977-114	BEARING PIN	2	
50	604-ZZM	BALL BEARING 604ZZMC3PS2S	2	
51	949-431	BOLT WASHER M5 (10 PCS.)	4	
52	606-ZZM	BALL BEARING 606ZZMC3PS2S	8	
53	949-432	BOLT WASHER M6 (10 PCS.)	4	
54	949-455	SPRING WASHER M6 (10 PCS.)	4	

ITEM NO.	CODE NO.	DESCRIPTION	NO. USED	REMARKS
55	977-139	BEARING PIN (B)	4	
56	949-891	PIN D4X10 (10 PCS.)	2	
57	949-499	ROLL PIN D4X20 (10 PCS.)	1	
58	977-119	TENSION LEVER	1	
59	949-429	BOLT WASHER M4 (10 PCS.)	2	
60	604-ZZM	BALL BEARING 604ZZMC3PS2S	1	
61	949-499	ROLL PIN D4X20 (10 PCS.)	1	
63	936-311	WASHER (B)	2	
64	977-109	WASHER (A)	1	
65	949-531	SPLIT PIN D2X12 (10 PCS.)	1	
66	949-426	WASHER M8 (10 PCS.)	2	
67	977-117	COVER SCREW (A)	1	
68	949-455	SPRING WASHER M6 (10 PCS.)	1	
69	977-120	TENSION SPRING	1	
70	977-118	CAM SHAFT (A)	1	
73	977-112	CHAIN	1	
74	977-096	SPROCKET ASS'Y	1	INCLUD.75-78,80-86
75	977-097	SPROCKET SHAFT	1	
76	931-008	FEATHER KEY 4X4X12	1	
77	977-102	OIL SEAL	1	
78	977-101	NEEDLE BEARING	1	
79	949-239	MACHINE SCREW M5X16 (10 PCS.)	2	
80	977-103	SHAFT HOLDER	1	
81	977-100	O-RING (P-38)	1	
82	620-1VV	BALL BEARING 6201VVCMP2S	1	
83	948-001	RETAINING RING FOR D32 HOLE	1	
84	977-098	WORM WHEEL	1	
85	949-458	SPRING WASHER M10 (10 PCS.)	1	
86	977-099	ADJUSTING NUT (B)	1	
87	949-236	MACHINE SCREW M5X10 (10 PCS.)	2	
88	303-190	SAW COVER (C)	1	
89	977-125	GUIDE PLATE	1	
90	996-728	HEX. SOCKET HD. BOLT (W/WASHERS) M5X16	2	
93	303-187	SAW COVER (A)	1	
94	949-453	SPRING WASHER M4 (10 PCS.)	1	
95	949-215	MACHINE SCREW M4X8 (10 PCS.)	1	
96	977-142	SEAL CAP	1	
97	972-207	WASHER	1	
98	949-215	MACHINE SCREW M4X8 (10 PCS.)	1	
99	977-132	SEAL WASHER	1	
100	302-164	OIL GAUGE	1	
103	949-660	HEX. SOCKET HD. BOLT M6X20 (10 PCS.)	1	
104	949-455	SPRING WASHER M6 (10 PCS.)	1	
105	967-329	WASHER (H)	1	
106	949-891	PIN D4X10 (10 PCS.)	2	
111	949-660	HEX. SOCKET HD. BOLT M6X20 (10 PCS.)	1	
112	949-455	SPRING WASHER M6 (10 PCS.)	1	
113	977-135	WASHER (B)	1	
114	977-106	PLASTIC WASHER	2	
115	949-661	HEX. SOCKET HD. BOLT M6X30 (10 PCS.)	3	
116	949-455	SPRING WASHER M6 (10 PCS.)	3	
117	977-106	SAW WHEEL ASS'Y	1	INCLUD.118

ITEM NO.	CODE NO.	DESCRIPTION	NO. USED	REMARKS
118	977-101	NEEDLE BEARING	2	
119	977-110	SAW WHEEL RUBBER	1	
120	977-111	SPROCKET	1	
121	977-105	SAW SHAFT	1	
122	949-429	BOLT WASHER M4 (10 PCS.)	2	
123	949-221	MACHINE SCREW M4X20 (10 PCS.)	2	
124	959-140	CONNECTOR 50091 (10 PCS.)	1	
125	959-141	CONNECTOR 50092 (10 PCS.)	1	
126	994-565	CORD ARMOR D10.1	1	
127	302-172	CORD	1	
128	994-566	CORD CLIP	1	
129	977-079	TAPPING SCREW D4X16	2	
131	949-432	BOLT WASHER M6 (10 PCS.)	1	
132	949-830	HEX. SOCKET HD. BOLT M6X10 (10 PCS.)	1	
133	302-173	SWITCH (2P SCREW TYPE) W/O LOCK	1	
134	301-771	TAPPING SCREW (W/WASHER) D4X12	2	
135	302-536	HANDLE ASS'Y	1	INCLUD.136
136	988-889	TAPPING SCREW (W/WASHER) D4X25	3	
137	302-174	PANEL BOX	1	
138	302-175	CONTROLLER CIRCUIT	1	
139	977-626	INTERNAL WIRE (A)	1	
140	302-171	SWITCH PANEL	1	
141	977-134	SAFETY COVER	1	
142	977-136	SPECIAL NUT M20	1	
143	973-220	TERMINAL	3	

STANDARD ACCESSORIES

ITEM NO.	CODE NO.	DESCRIPTION	NO. USED	REMARKS
701	994-551	BAND SAW BLADE NO. 2 18TPI (10 PCS.)	1	

OPTIONAL ACCESSORIES

ITEM NO.	CODE NO.	DESCRIPTION	NO. USED	REMARKS
901	994-555	BAND SAW BLADE NO. 6 6TPI (10 PCS.)	1	
902	994-554	BAND SAW BLADE NO. 5 8TPI (10 PCS.)	1	
903	994-553	BAND SAW BLADE NO. 4 10TPI (10 PCS.)	1	
904	994-550	BAND SAW BLADE NO. 1 24TPI (10 PCS.)	1	
905	994-559	BAND SAW BLADE NO. 10 8TPI (HSS) 3 PCS.	1	
906	994-558	BAND SAW BLADE NO. 9 10TPI (HSS) 3 PCS.	1	
907	994-557	BAND SAW BLADE NO. 8 14TPI (HSS) 3 PCS.	1	
908	994-556	BAND SAW BLADE NO. 7 18TPI (HSS) 3 PCS.	1	