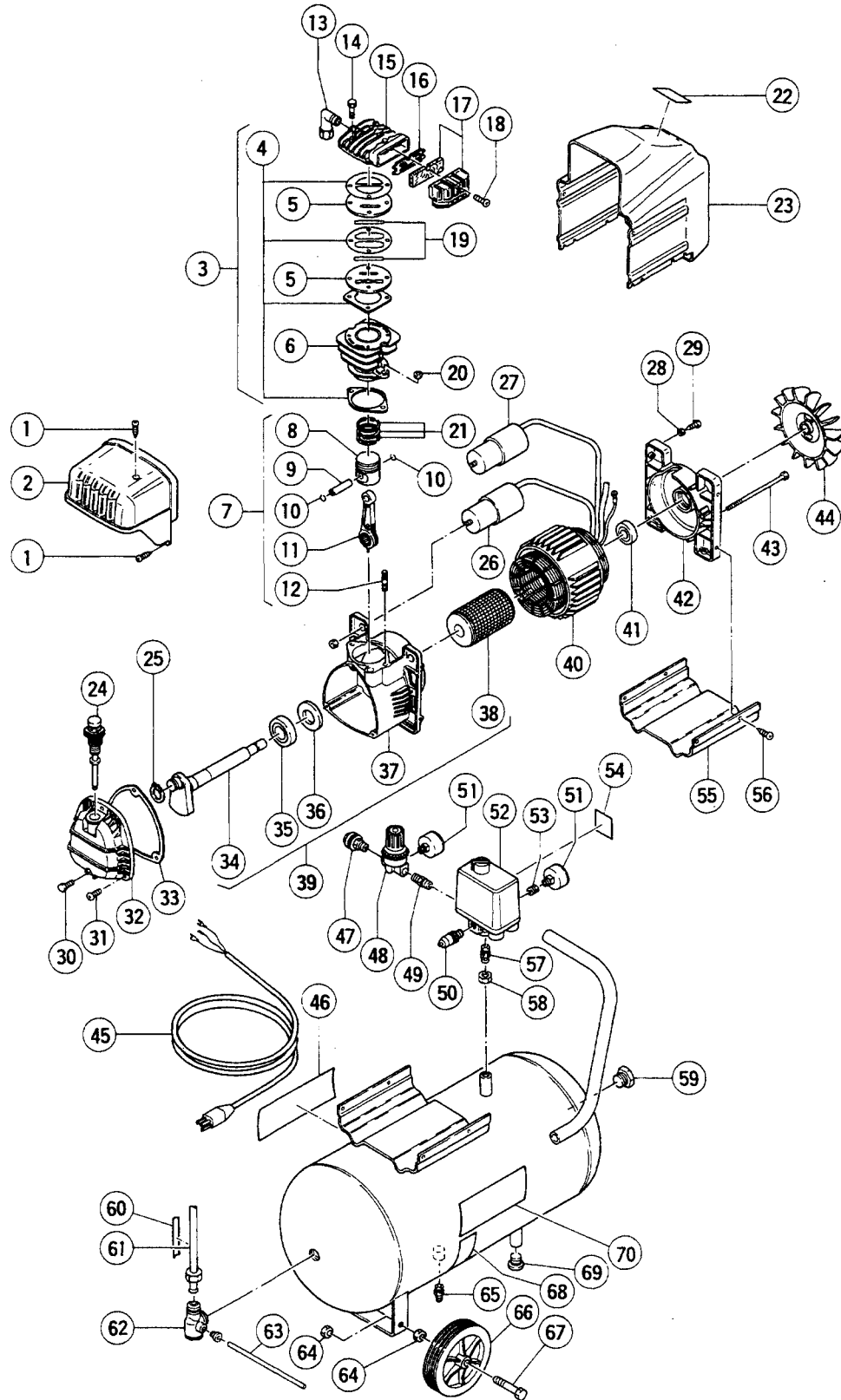


ELECTRIC TOOL PARTS LIST

■ AIR COMPRESSOR
Model EC 10SC

1998·7·10
(E1)



PARTS

EC 10SC

ITEM NO.	CODE NO.	DESCRIPTION	NO. USED	REMARKS
1	881-484	SCREW	3	
2	882-625	COVER CONVEVOR	1	
3	882-588	PLATES AND VALVES SET	1	
4	881-457	SET OF GASKET	1	
5	881-458	VALVE PLATE	2	
6	881-459	CYLINDER	1	
7	882-589	CON ROD AND PISTON SET	1	
8	881-461	PISTON	1	
9	881-462	PISTON PIN	1	
10	881-463	RING	2	
11	881-561	CONNECTING ROD	1	
12	881-465	STUD BOLT	2	
13	881-455	JOINT	1	
14	881-454	SCREW	1	
15	882-621	HEAD	1	
16	881-453	FILTER PLATE	1	
17	882-620	INTAKE FILTER	1	
18	881-450	SCREW	1	
19	881-490	SET OF VALVE	1	
20	881-489	NUT	2	
21	881-460	PISTON RING	1	
22		NAME PLATE	1	
23	882-624	HOUSING	1	
24	881-469	DIPSTICK	1	
25	881-468	SEEGER	1	
26	881-407	CAPACITOR	1	
27	882-626	CAPACITOR	1	
28	881-485	WASHER	1	
29	881-484	SCREW	1	
30	881-471	SCREW	1	
31	881-472	SCREW	3	
32	882-622	CARTER COVER	1	
33	881-473	GASKET	1	
34	882-580	CRANK SHAFT	1	
35	881-466	BALL BEARING	1	
36	881-474	SMIM RING	1	
37	882-581	CARTER	1	
38	882-623	ROTOR	1	
39	882-590	CARTER SHAFT AND ROTOR SET	1	
40	882-583	MOTOR	1	
41	881-478	BALL BEARING	1	
42	882-585	COVER	1	
43	881-480	TENSION ROD	1	
44	881-483	FAN	1	
45	881-503	INFEEED CABLE	1	
46		WARNING LABEL (A)	1	
47	881-509	JOINT	1	
48	881-510	PRESSURE REDUCER	1	
49	881-511	JOINT	1	
50	881-493	SAFETY VALVE	1	
51	882-591	PRESSURE GAUGE	2	

* : ALTERNATIVE PARTS

7 - 98

