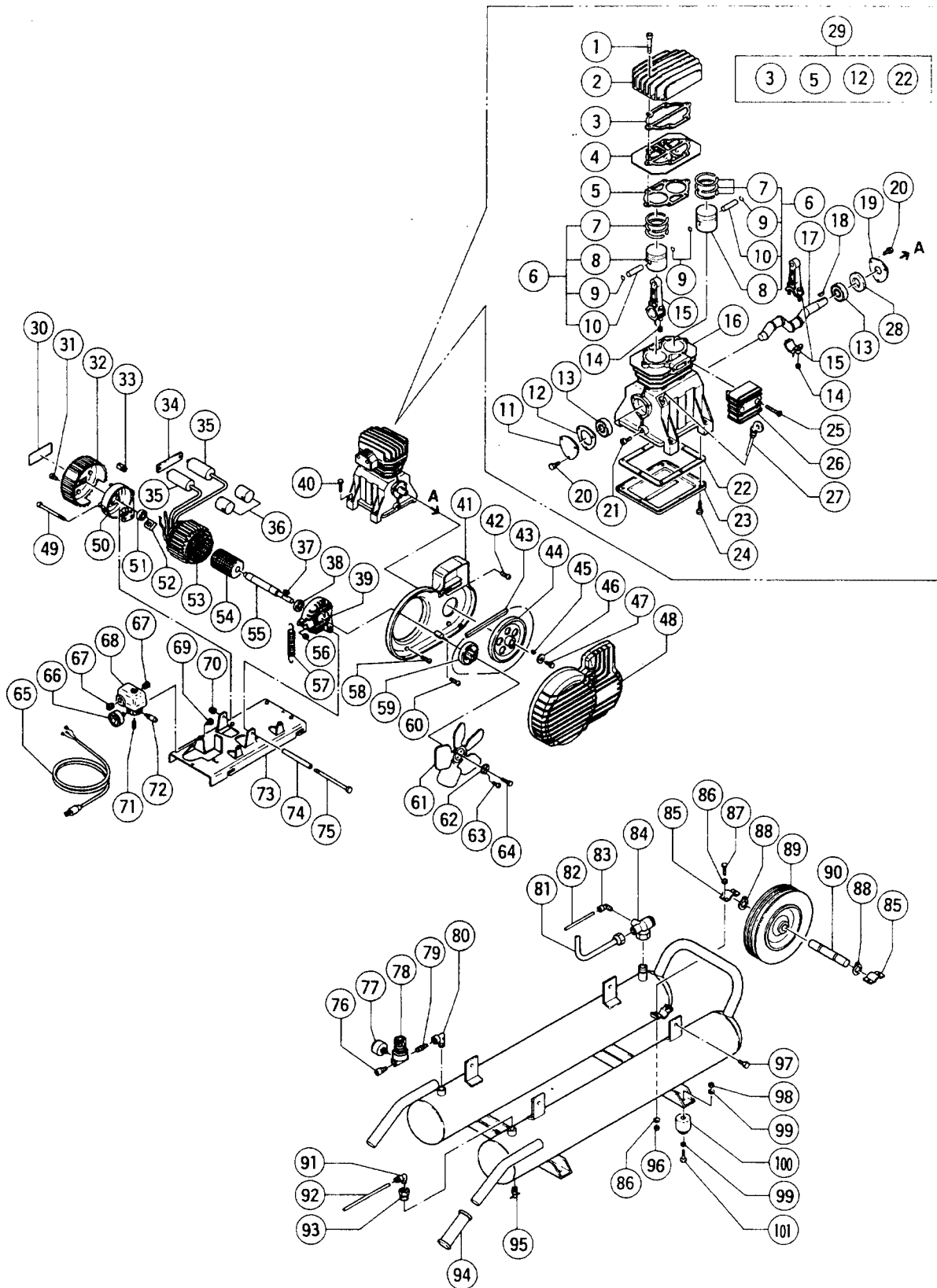


## ELECTRIC TOOL PARTS LIST

■ AIR COMPRESSOR  
Model EC 16

1996 · 11 · 30  
(E1)



## PARTS

EC 16

ITEM NO.	CODE NO.	DESCRIPTION	NO. USED	REMARKS
1	881 - 610	SCREW M8X40	6	
2	881 - 611	HEAD	1	
3	881 - 612	GASKET	1	
4	881 - 613	VALVE PLATE	1	
5	881 - 614	GASKET	1	
6	881 - 619	PISTON GROUP	2	INCLUD.7 - 10
7	881 - 615	PISTON RINGS	2	
8	881 - 616	PISTON	2	
9	881 - 618	RING	4	
10	881 - 617	PISTON PIN	2	
11	881 - 624	COVER	1	
12	881 - 623	GASKET	1	
13	881 - 622	BALL BEARING 6204	2	
14	881 - 401	NUT	4	
15	881 - 620	CON ROD	2	
16	881 - 621	CARTER	1	
17	881 - 633	CRANK SHAFT	1	
18	881 - 634	KEY	1	
19	881 - 636	COVER	1	
20	881 - 625	SCREW M6X15	6	
21	881 - 626	PLUG	1	
22	881 - 629	GASKET	1	
23	881 - 628	CARTER COVER	1	
24	881 - 627	SCREW M5X15	8	
25	881 - 631	SCREW M8X20	2	
26	881 - 632	INTAKE FILTER	1	
27	881 - 630	DIPSTICK	1	
28	881 - 635	SMIM RING	1	
29	881 - 637	SET OF GASKET	1	INCLUD.3,5,12,22
30		NAME PLATE	1	
31	881 - 484	SCREW	4	
32	881 - 641	CONVEYOR	1	
33	881 - 640	STRETCH ELIMINATOR	1	
34	881 - 639	PLATE	1	
35	881 - 488	CAPACITOR	2	
36	881 - 638	CAPACITOR SHROUD	2	
37	881 - 669	TAB	1	
38	881 - 478	BALL BEARING	1	
39	881 - 668	DRILLED COVER	1	
40	881 - 670	SCREW	4	
41	881 - 667	HOUSING SUPPORT	1	
42	881 - 666	SCREW	1	
43	881 - 665	BELT	1	
44	881 - 664	PULLEY	1	
45	881 - 634	KEY	1	
46	881 - 663	WASHER	1	
47	881 - 571	SCREW	1	
48	881 - 659	HOUSING COVER	1	
49	881 - 642	TENSION ROD	2	
50	881 - 643	COVER	1	
51	881 - 478	BALL BEARING	1	

\*: ALTERNATIVE PARTS

## PARTS

EC 16

ITEM NO.	CODE NO.	DESCRIPTION	NO. USED	REMARKS
52	881-487	CHOCK	1	
53	881-644	MOTOR CASING	1	
54	881-645	ROTOR	1	
55	881-646	SHAFT	1	
56	881-418	NUT	2	
57	881-647	SPRING	1	
58	881-660	SCREW	2	
59	881-662	PULLEY	1	
60	881-661	SCREW	2	
61	881-656	FAN	1	
62	881-658	WASHER	1	
63	881-492	SCREW	2	
64	881-657	SCREW	1	
65	881-503	INFEED CABLE	1	
66	881-650	PRESSUR GAUGE	1	
67	881-507	STRETCH ELIMINATOR	2	
68	881-575	PRESSURE SWITCH	1	
69	881-649	PLUG	1	
70	881-648	SELFLOCKING NUT	1	
71	881-651	QUICK COUPLING	1	
72	881-652	SAFETY VALVE	1	
73	881-653	BASE	1	
74	881-654	BUSHING	1	
75	881-655	TENSION ROD	1	
76	881-509	JOINT	1	
77	881-508	PRESSURE GAUGE	1	
78	881-510	PRESSURE REDUCER	1	
79	881-678	JOINT	1	
80	881-677	JOINT	1	
81	881-676	INFEED TUBE	1	
82	881-675	HOSE D6	1	
83	881-495	JOINT	1	
84	881-674	NON RETURN VALVE	1	
85	881-671	FIXING BRACKET	2	
86	881-419	WASHER	8	
87	881-399	SCREW	4	
88	881-468	SEEGER	2	
89	881-673	WHEEL	1	
90	881-672	WHEEL PIN	1	
91	881-680	JOINT	1	
92	881-679	HOSE D6	1	
93	881-681	JOUNT	1	
94	881-682	HANDLE	2	
95	881-498	DISCHARGE TAP	2	
96	881-418	NUT	4	
97	881-685	SCREW	4	
98	881-401	NUT	4	
99	881-573	WASHER	8	
100	881-684	RUBBER	4	
101	881-683	SCREW	4	

\*: ALTERNATIVE PARTS