

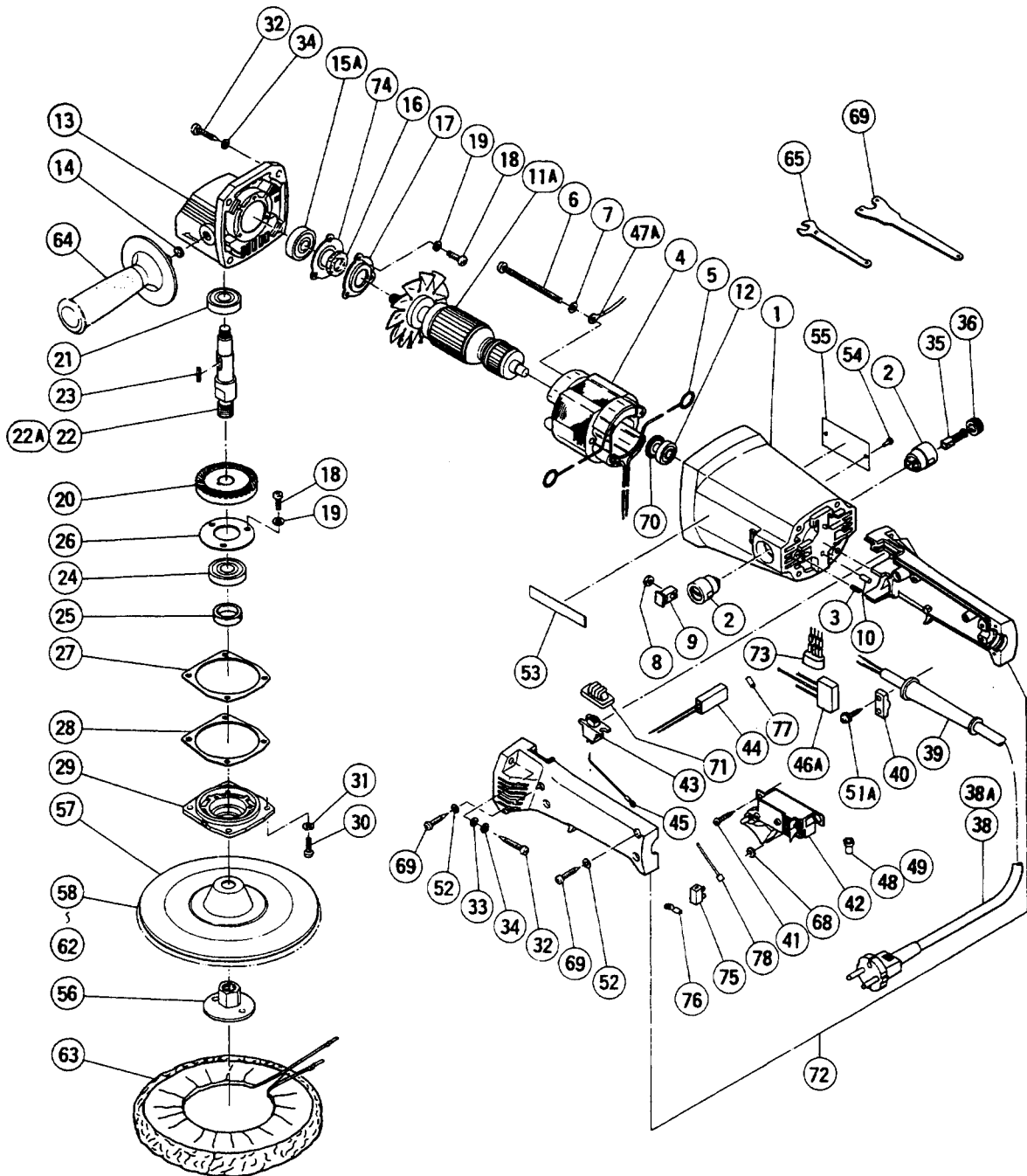
# HITACHI

LIST NO. 0307

## ELECTRIC TOOL PARTS LIST

■ DISC SANDER POLISHER  
Model SAT-180

1993 · 10 · 1  
(E8)



## PARTS

SAT-180

ITEM NO.	CODE NO.	DESCRIPTION	NO. USED	REMARKS	
*	1	953-230	HOUSING ASS'Y	1	INCLUD.2,3
*	1	953-288Z	HOUSING ASS'Y	1	INCLUD.2,3 FOR AUT
*	2	958-900	BRUSH HOLDER	2	
*	2	981-586	BRUSH HOLDER	2	FOR AUT
	3	949-385	SLOTTED HD. SET SCREW M4X5 (10 PCS.)	2	
*	4	953-231C	STATOR ASS'Y 110V - 120V	1	INCLUD.5
*	4	953-231E	STATOR ASS'Y 220V - 230V	1	INCLUD.5
*	4	953-231L	STATOR ASS'Y 220V	1	INCLUD.5 FOR EUROPE
*	4	953-231M	STATOR ASS'Y 220V - 230V	1	INCLUD.5 FOR ITA,HOL,SWE,AUT
*	4	953-231J	STATOR ASS'Y 220V - 230V	1	INCLUD.5 FOR NZL
*	4	953-231K	STATOR ASS'Y 220V - 230V	1	INCLUD.5 FOR SAF
*	4	953-231F	STATOR ASS'Y 240V	1	INCLUD.5 FOR GBR
*	4	953-231H	STATOR ASS'Y 240V	1	INCLUD.5 FOR AUS
	5	930-703	BRUSH TERMINAL	2	
	6	949-233	MACHINE SCREW M5X55 (10 PCS.)	2	
	7	949-454	SPRING WASHER M5 (10 PCS.)	2	
	8	949-555	NUT M5 (10 PCS.)	2	
	9	953-232	NUT COVER	2	
	10	931-701	BEARING LOCK	1	
*	11A	953-297C	ARMATURE ASS'Y 110V - 120V	1	INCLUD.12,15A,70
*	11A	953-297E	ARMATURE ASS'Y 220V - 230V	1	INCLUD.12,15A,70
*	11A	953-297F	ARMATURE ASS'Y 240V	1	INCLUD.12,15A,70
	12	608-VVM	BALL BEARING 608VVMC2EPS2L	1	
	13	953-234	GEAR COVER ASS'Y	1	INCLUD.14
	14	937-033	FELT WASHER	1	
	15A	600-2VV	BALL BEARING 6002VVMCPS2S	1	
	16	953-235	FELT PACKING (A)	1	
	17	953-236	BEARING COVER	1	
	18	949-217	MACHINE SCREW M4X12 (10 PCS.)	6	
	19	949-453	SPRING WASHER M4 (10 PCS.)	6	
	20	953-237	GEAR	1	
	21	620-0VV	BALL BEARING 6200VVMCPS2S	1	
*	22	953-238Z	SPINDLE	1	
*	22A	953-248P	SPINDLE	1	5/8" - 11UNC FOR USA
	23	940-533	FEATHER KEY 3X3X10	1	
	24	620-2VV	BALL BEARING 6202VVMCPS2S	1	
	25	938-403	FELT PACKING	1	
	26	937-077	BEARING COVER (A)	1	
	27	953-239	SEAL PACKING (A)	1	
	28	953-240	THRUST WASHER (B)	2	
	29	953-241	PACKING GLAND	1	
	30	949-239	MACHINE SCREW M5X16 (10 PCS.)	4	
	31	949-454	SPRING WASHER M5 (10 PCS.)	4	
	32	937-807	TAPPING SCREW D5X25	8	
	33	949-424	WASHER M5 (10 PCS.)	4	
	34	949-454	SPRING WASHER M5 (10 PCS.)	8	
	35	999-043	CARBON BRUSH (1 PAIR)	2	
*	36	945-161	BRUSH CAP	2	
*	36	981-781	BRUSH CAP	2	FOR AUT
*	38	500-226Z	CORD	1	(CORD ARMOR D8.2) FOR AUS
*	38	500-201Z	CORD	1	(CORD ARMOR D10.7) FOR ASIA

\*: ALTERNATIVE PARTS

## PARTS

SAT-180

ITEM NO.	CODE NO.	DESCRIPTION	NO. USED	REMARKS
* 38	500-223Z	CORD	1	(CORD ARMOR D10.7) FOR SIN
* 38	500-231Z	CORD	1	(CORD ARMOR D8.2) FOR GBR (110V),SAF
* 38	500-234Z	CORD	1	(CORD ARMOR D8.2) FOR EUROPE
* 38	500-240Z	CORD	1	(CORD ARMOR D8.2) FOR USA
* 38	500-420Z	CORD	1	(CORD ARMOR D10.7) FOR SAU (127V)
* 38	500-423Z	CORD	1	(CORD ARMOR D8.2) FOR SAU (220V)
* 38A	500-435Z	CORD	1	(CORD ARMOR D8.2) FOR GBR (240V)
* 39	958-049Z	CORD ARMOR D8.2	1	
* 39	940-778	CORD ARMOR D10.7	1	
	40	937-831	1	CORD CLIP
	41	954-017	2	TAPPING SCREW D4X12
* 42	986-201	SWITCH (A) (1P SCREW TYPE) W/LOCK	1	
* 42	958-832	SWITCH (B) (2P SCREW TYPE) W/LOCK	1	FOR AUS,GBR,FRG,FRA,DEN,ESP,SUI,USA, HKG
* 42	931-573	SWITCH (2P PILLAR TYPE) W/LOCK	1	FOR ITA,HOL,SWE,AUT,NOR
* 42	953-249P	SWITCH (B) (2P SCREW TYPE) W/O LOCK	1	FOR CAN
* 43	953-281	SLIDE SWITCH (1P SOLDER TYPE)	1	
* 43	953-266Z	SLIDE SWITCH ASS'Y (1P SOLDER TYPE)	1	INCLUD.45 FOR USA
* 44	956-613	DIODE 100V - 127V	1	
* 44	957-558	DIODE 220V - 240V	1	
* 44	953-267Z	DIODE 110V - 115V	1	FOR USA
* 44	990-373	CONTROLLER CIRCUIT	1	FOR AUS
* 45	953-243	INTERNAL WIRE	1	
* 45		INTERNAL WIRE	1	FOR NZL,ITA,SWE,NOR
* 45		INTERNAL WIRE	2	FOR USA
* 46A	984-273	NOISE SUPPRESSOR	1	
* 47A	981-010	INTERNAL WIRE	1	
* 48	959-140	CONNECTOR 50091 (10 PCS.)	1	
* 48	959-140	CONNECTOR 50091 (10 PCS.)	2	
* 49	959-141	CONNECTOR 50092 (10 PCS.)	1	
	51A	984-750	2	TAPPING SCREW (W/FLANGE) D4X16
	52	949-423	3	WASHER M4 (10 PCS.)
	53	957-581	1	HITACHI LABEL
* 54	949-509	RIVET D2.5X3.2 (10 PCS.)	2	
	55		1	NAME PLATE
* 56	953-246Z	WASHER NUT M14	1	
* 56	953-254P	WASHER NUT 5/8" - 11UNC	1	FOR USA
* 57	953-247Z	RUBBER PAD D14	1	
* 57	953-255	RUBBER PAD FOR D16 HOLE	1	FOR USA
	58	939-042	2	SANDING DISCS 180MM CC24 (10 PCS.)
	59	939-043	2	SANDING DISCS 180MM CC30 (10 PCS.)
	60	939-047	2	SANDING DISCS 180MM CC50 (10 PCS.)
	61	939-049	2	SANDING DISCS 180MM CC80 (10 PCS.)
	62	939-051	2	SANDING DISCS 180MM CC120 (10 PCS.)
	63	949-103	1	WOOL BONNET 180MM
	64	956-833	1	SIDE HANDLE
	65	937-914	1	WRENCH 17MM
	66	937-913Z	1	WRENCH
* 68	949-440	WASHER (BRASS) M3.5 (10 PCS.)	2	FOR AUS (FOR SWITCH)
	69	956-384	3	TAPPING SCREW D4X20
	70	956-387	1	DUST SEAL (A)

\*: ALTERNATIVE PARTS

