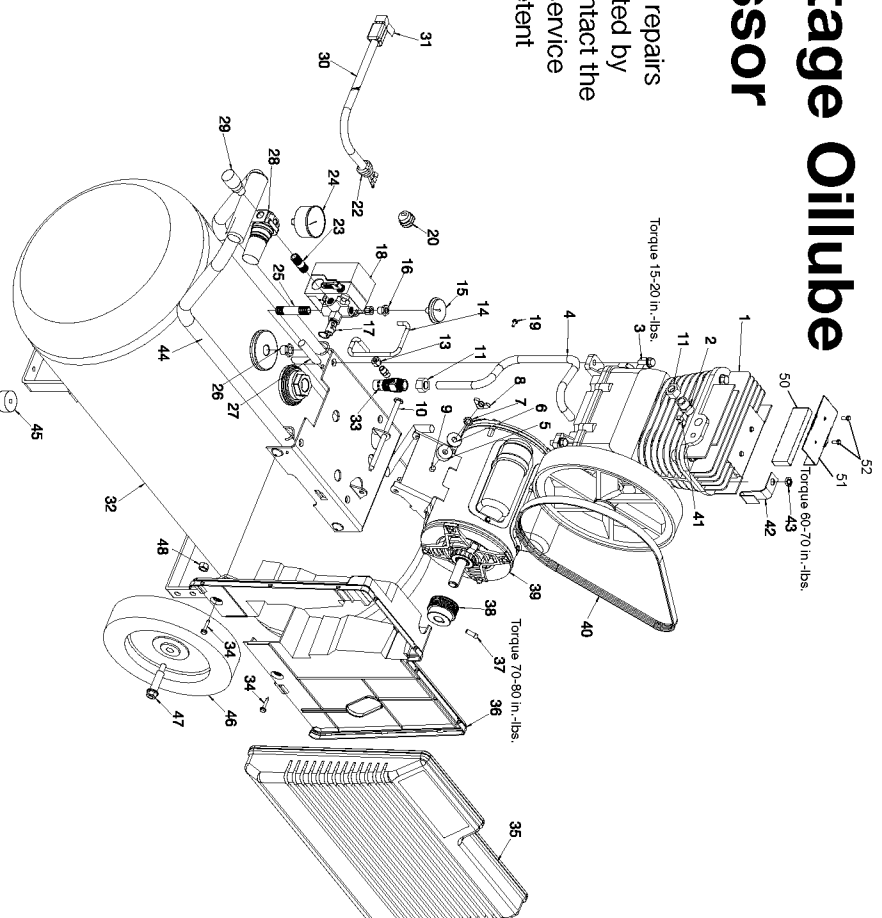


# PORTER-CABLE

CPL6025

## Single-Stage Oillube Compressor

**WARNING:** Electrical repairs should only be attempted by trained repairmen. Contact the nearest Porter-Cable Service Center or other competent repair center.



## Parts List for CPL6025 Type 1

Item Number	Part Number	Description	Qty Required
1	N076030SV	PUMP ASSEMBLY	1
2	SSP-9401	CONNECTOR BODY STRAI	1
3	SSF-928	SCREW .313-18X.875 H	1
4	AC-0041	TUBE OUTLET .500OD A	1
5	CAC-1011	SPRING ELASTOMER	1
6	SSN-56-ZN	WASHER 1 X 11/32 X 1	10
7	N017772	LOCK WASHER	10
8	SS-2038-ZN	NUT .313-18 WING	10
9	CAC-1013	SCREW HOLD DOWN	10
10	D21594	PIN MOTOR MOUNT OIL	1
11	SSP-7812	ASSY NUT SLEEVE 1/2	1
13	SSP-7811	ASSY NUT SLEEVE 1/4	1
14	D20610	TUBE PRESSURE RELIEF	1
15	Z-D23004	GAUGE 1.5OD 200PSI .	1
16	SSP-6021	BUSHING REDUCER 1/8-	1
17	TIA-4150	VALVE SAFETY 150 .25	1
18	5140112-32	PRESSURE SWITCH	1
18	AC-0557	COVER PRES SWITCH	1
20	33821-00	BUSHING	1
20	438010040063	HEYCO BUSHINGS	1
22	SSW-7385	BUSHING STRAIN RELIE	1
23	N055549	NIPPLE	1
24	Z-D27212	GAUGE 200PSI .125NPT	1
25	D24888	NIPPLE .25NPT X 2.5	1
26	D21429	BUSHING REDUCER .375	1
27	CAC-4215-1	ASSY CORD MOTOR SJT	1
28	D27255	REGULATOR 4PORT P2 H	1

COPYRIGHT© 2005. All Rights Reserved.

Parts list, pricing, and availability subject to change. Please visit [www.dewaltservicenet.com](http://www.dewaltservicenet.com) for current parts information.

## Parts List for CPL6025 Type 1

Item Number	Part Number	Description	Qty Required
29	A19513	BODY QC .250 IND .25	1
30	SUDL-413-2	ASSY CORD POWER ST	1
31	LA-2876	LABEL POWER CORD TRI	1
32	000000-00	No Longer Available	1
33	A19715	VALVE CHECK 1/2NPT X	1
34	D26742	SCREW #10-16 X .500	10
35	D20273	BELTGUARD OUTSIDE P-	1
36	D20272	BELTGUARD INSIDE P-C	1
37	SS-391	SCREW .250-20 .625 S	10
38	000000-00	No Longer Available	1
39	000000-00	No Longer Available	1
40	C-BT-222	BELT 6J 38.0 EFF	1
41	SS-1215	PLUG PIPE GALV 1/8	1
42	000000-00	No Longer Available	1
43	SSF-8113-ZN	NUT .375-16X.563 HEX	10
44	D20277	HANDLE .875 OD 25G O	1
45	D24721	KIT ISOLATOR W/SCREW	1
46	D23067	WHEEL PNEUMATIC 10IN	1
47	D23574	BOLT .375-16X3.40 UN	10
48	SSF-8080-ZN	NUT .375-16 UNC-2B H	10
50	265-17	FILTER FELT	1
51	265-18	RETAINER FILTER	1
52	SSF-925	SCREW .250-20X.875 H	2
101	SSF-6627	STUD SHOULDER 3/8-16	1
102	Z-CAC-4213	ASSY HEAD	1
103	SSF-955	SCREW .375-16X1.50 H	5
104	SS-1215	PLUG PIPE GALV 1/8	1

COPYRIGHT© 2005. All Rights Reserved.

Parts list, pricing, and availability subject to change. Please visit [www.dewaltservicenet.com](http://www.dewaltservicenet.com) for current parts information.

## Parts List for CPL6025 Type 1

Item Number	Part Number	Description	Qty Required
105	SSP-9401	CONNECTOR BODY STRAI	1
106	5140118-80	GASKET	1
109	CAC-294	PLATE RESTRICTOR	2
111	Z-CAC-4212-1	ASSY VALVE PLATE	1
112	CAC-1265-2	USE Z-CAC-1265-2	1
116	CAC-55-1	PISTON MACHINE DWG 2	2
117	265-19	PIN PISTON	2
118	CAC-207	PLUG PISTON PIN	4
119	265-410	ASSY CONNECTING ROD	2
120	SSF-927	SCREW .250-20X1.125	4
121	Z-AC-0205	CRANKCASE & CYLINDER	1
122	SSN-1018	WASHER WAVY SPRING 2	1
123	AC-0169	SEAL OIL	1
124	SSF-925	SCREW .250-20X.875 H	8
125	000000-00	No Longer Available	1
126	265-16-1	GASKET BASE	1
127	Z-D22270	CRANKSHAFT MACH BALL	1
128	SST-104	BEARING 6205C3	2
129	SSP-486	PLUG PIPE 3/8 - 18 N	2
130	SSP-505	PLUG 52MM OIL	1
131	265-2	FLYWHEEL 10 OD CI PO	1
132	SSN-1014-ZN	WASHER .339/.344 ID	1
133	SSF-3039-ZN	SCREW .313-18X.750 H	1
134	265-6	VENT FILTER	2
856	000000-00	No Longer Available	1
856	N008805	LABEL WARNING PORT E	1
856	000000-00	No Longer Available	1

COPYRIGHT© 2005. All Rights Reserved.

Parts list, pricing, and availability subject to change. Please visit [www.dewaltservicenet.com](http://www.dewaltservicenet.com) for current parts information.

## Parts List for CPL6025 Type 1

Item Number	Part Number	Description	Qty Required
856	N286039	DRAIN VALVE	1
856	5140118-39	GASKET KIT	1
856	LA-3108	LABEL HOT SURFACE EN	1
856	LA-3027	LABEL DRAIN TANK ENG	1
856	LA-3164	LABEL	1
856	K-0080	KIT 240V CONVERSION	1
856	KK-4275	KIT VALVE	1

COPYRIGHT© 2005. All Rights Reserved.

Parts list, pricing, and availability subject to change. Please visit [www.dewaltservicenet.com](http://www.dewaltservicenet.com) for current parts information.