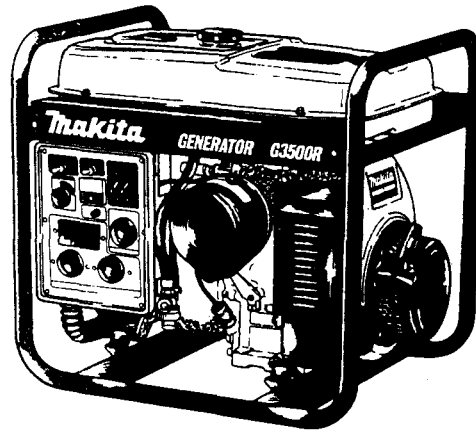


# Makita

## GENERATOR

Model G3500R  
Model G3501R



### PARTS BREAKDOWN

### CONTENTS

#### GENERATOR PARTS

- 1 ) Generator
- 2-1) Pipe Frame and Fuel Tank (G3500R)
- 2-2) Pipe Frame and Fuel Tank (G3501R)
- 3-1) Control Box (G3500R)      Up to #5005664
- 3-2) Control Box (G3500R)      #5005665 to #5019283
- 3-3) Control Box (G3500R)      After #5019284
- 3-4) Control Box (G3501R)      Up to #5006060
- 3-5) Control Box (G3501R)      #5006061 to #5019283
- 3-6) Control Box (G3501R)      After #5019284

#### ENGINE PARTS

- 4 ) Crankcase and Cylinder Head
- 5 ) Crankshaft and Piston
- 6 ) Intake and Exhaust
- 7 ) Governor, Operate
- 8-1) Cooling and Starting      Up to #5006355
- 8-2) Cooling and Starting      After #5006356
- 9 ) Carburetor and Solenoid
- 10-1) Electric Device (G3500R)
- 10-2) Electric Device (G3501R)
- 11-1) Oil Sensor      Up to #5019283
- 11-2) Oil Sensor      After #5019284
- 12 ) Starting Motor (G3501R)
- 13 ) Accessories

#### Notes:

- 1) INTERCHANGEABILITY:
  - 0; YES
  - X; NO
- 2) Model G3500R: w/o Electric Starter  
Model G3501R: w/ Electric Starter

**IMPORTANT** — To assure product SAFETY and RELIABILITY, repairs, maintenance or adjustments should be performed by MAKITA Service Centers or other qualified service organizations. Always use MAKITA replacement parts.

When ordering parts, always give the Model, Specification and Serial Number of Generator.

# 1. GENERATOR

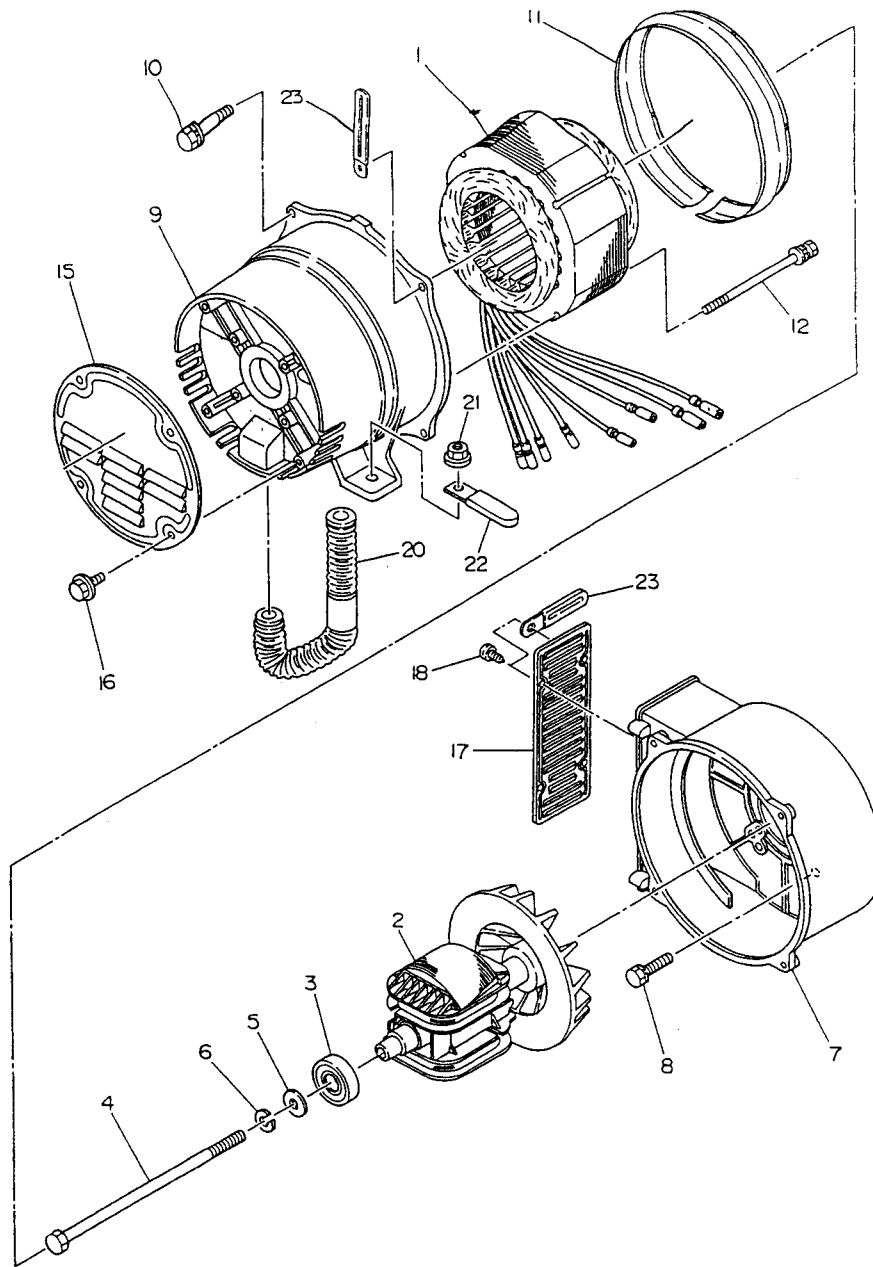


Fig.	Part No.	Qty. Used	Description	Fig.	Part No.	Qty. Used	Description
1	389-01300-01	1	STATOR	10	001-14062-50	4	BOLT & WASHER
	392-21300-01	1	STATOR	11	388-54381-03	1	SUPPORT RING
2	389-01000-01	1	ROTOR (Incl. Fig. 3)	12	392-25200-03	4	BOLT & WASHER M6X95
	392-21000-01	1	ROTOR (Incl. Fig. 3)	15	390-55001-03	1	END COVER
3	353-58208-08	1	B. BEARING		388-55001-13	1	END COVER
4	392-25100-03	1	THROUGH BOLT M10X200	16	011-00600-10	4	FLANGE BOLT
5	003-11100-00	1	WASHER	17	388-55101-03	1	FRONT PROTECTOR
	020-01001-70	1	WASHER	18	015-20500-10	4	TAPPING SCREW
6	003-20100-00	1	SPRING WASHER	20	391-29000-13	1	BUSHING
7	389-54101-13	1	FRONT COVER	21	002-38080-00	2	FLANGE NUT
8	001-13082-00	4	BOLT & WASHER	22	056-60001-70	1	CLAMP
9	388-54001-01	1	REAR COVER	23	056-60002-50	2	CLAMP (G3501R)

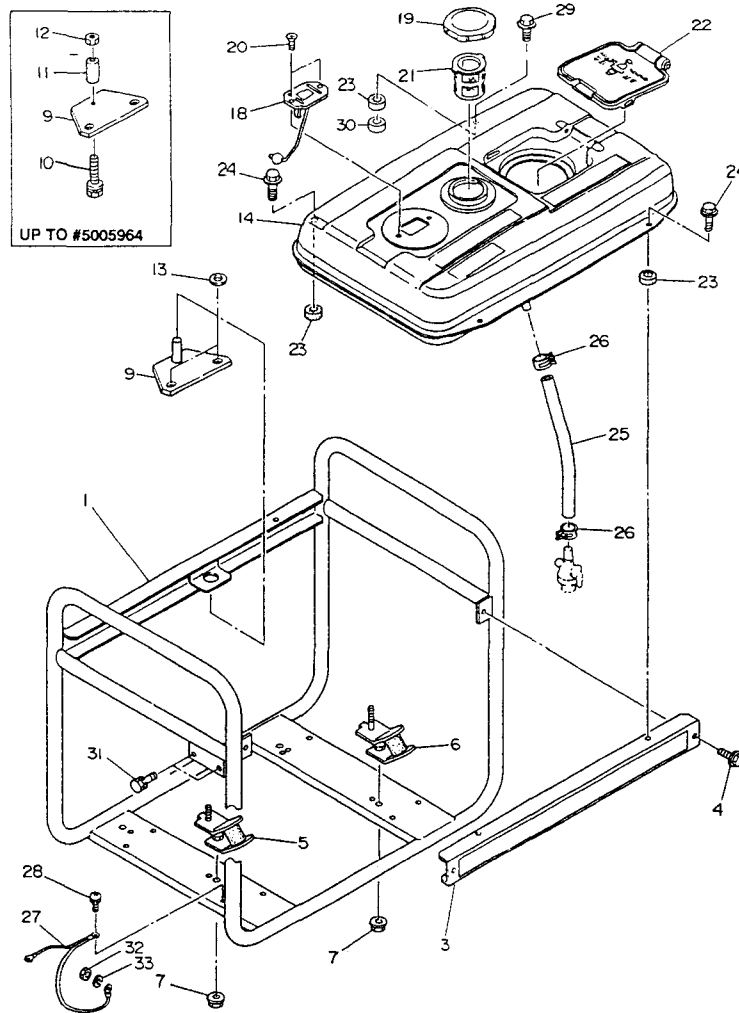


Fig.	Part No.	Qty. Used	Description	Fig.	Part No.	Qty. Used	Description		
1	389-71300-11	1	PIPE FRAME	Aft. #5005087	20	014-50500-40	2	C.H. SCREW	
	389-71300-01	1	PIPE FRAME	Aft. #5004559	21	064-13600-10	1	FUEL FILTER	
	389-71101-01	1	PIPE FRAME		22	227-66101-03	1	PLUG COVER	
	389-71101-00	1	PIPE FRAME		23	391-39000-13	4	RUBBER WASHER (TANK)	
3	389-72000-01	1	SIDE PLATE					(Use Bolt: 011-00602-20)Aft.#5012013	
4	011-00600-80	2	FLANGE BOLT		391-39000-03	4	RUBBER WASHER (Use Bolt:011-00601-80)		
5	377-37000-11	2	RUBBER MOUNT UNIT Gen. side		352-54327-08	4	RUBBER WASHER		
	377-37000-01	2	RUBBER MOUNT UNIT Gen. side	24	011-00602-20	4	FLANGE BOLT	Aft.#5012013	
	352-57041-18	2	RUBBER MOUNT UNIT Gen. side		011-00601-80	4	FLANGE BOLT		
6	377-37001-11	2	RUBBER MOUNT UNIT Engineside		011-00601-80	2	FLANGE BOLT		
	377-37001-01	2	RUBBER MOUNT UNIT Engineside	25	085-11100-00	1	RUBBER PIPE (11.5X17.5X230mm)		
	352-57042-18	2	RUBBER MOUNT UNIT Engineside	26	056-11700-10	2	HOSE CLAMP		
7	002-38080-00	4	FLANGE NUT	27	389-75101-01	1	EARTH CORD		
9	389-54411-11	1	STOPPER PLATE	Aft. #5005965					
	389-54411-08	1	STOPPER PLATE		389-75100-01	1	EARTH CORD	Aft.#5006356	
10	001-13063-50	1	BOLT & WASHER	Up to #5005964	388-39001-01	1	EARTH CORD		
11	389-54398-08	1	SPACER	Up to #5005964	28	376-39100-01	1	SCREW & WASHER M5x10	
12	002-17060-00	1	NUT	Up to #5005964	29	011-00601-90	2	FLANGE BOLT	Up to #5004558
13	003-12060-00	2	WASHER		30	023-00603-00	2	SPACER	Up to #5004558
14	234-69101-11	1	FUEL TANK		31	001-14061-60	2	BOLT & WASHER	
	234-69101-01	1	FUEL TANK		32	002-19040-00	1	NUT	Aft.#5006356
18	064-80004-00	1	FUEL GAUGE						
19	043-04300-15	1	FUEL TANK CAP		002-19060-00	1	NUT		
					391-49002-03	1	NUT		
					33	003-20040-00	1	SPRING WASHER	

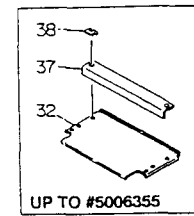
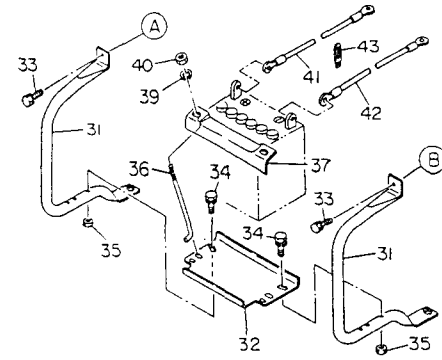
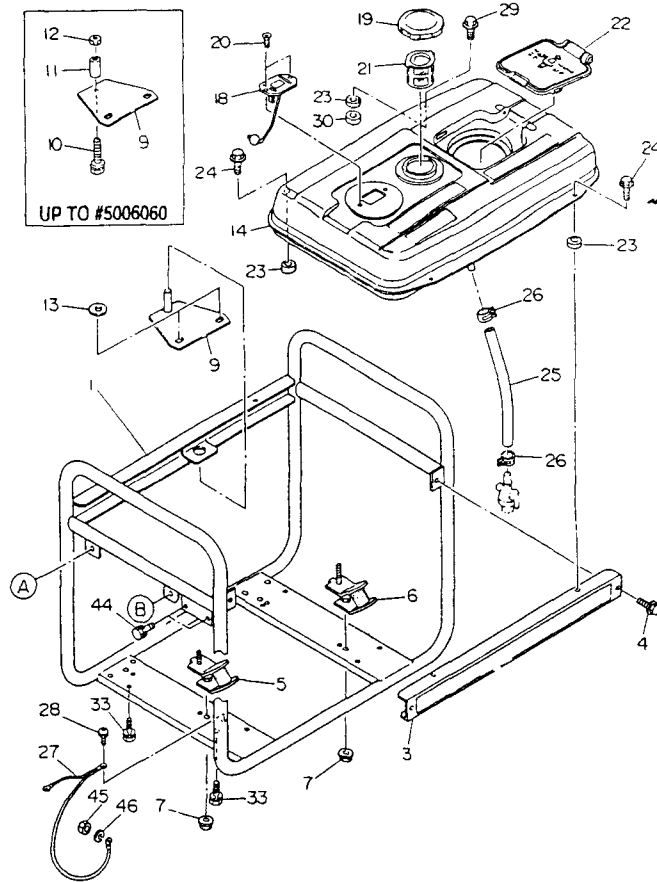


Fig.	Part No.	Qty. Used	Description	Fig.	Part No.	Qty. Used	Description
1	389-71200-11	1	PIPE FRAME	25	085-11100-00	1	RUBBER PIPE
	389-71200-01	1	PIPE FRAME	26	056-11700-10	2	HOSE CLAMP
	389-71001-01	1	PIPE FRAME	27	389-75101-01	1	EARTH CORD
3	389-72000-01	1	SIDE PLATE		389-75100-01	1	EARTH CORD
4	011-00600-80	2	FLANGE BOLT		388-39001-01	1	EARTH CORD
5	377-37000-11	2	RUBBER MOUNT UNIT Gen. side	28	376-39100-01	1	SCREW & WASHER (M5X10)
	377-37000-01	2	RUBBER MOUNT UNIT Gen. side	29	011-00601-90	2	FLANGE BOLT
	352-57041-18	2	RUBBER MOUNT UNIT Gen. side	30	023-00603-00	2	SPACER
6	377-37001-11	2	RUBBER MOUNT UNIT Engine side	31	389-56074-08	2	BATTERY FRAME
	377-37001-01	2	RUBBER MOUNT UNIT Engine side	32	391-33008-21	1	BATTERY BASE
	352-57042-18	2	RUBBER MOUNT UNIT Engine side		389-54451-08	1	BATTERY BASE
7	002-38080-00	4	FLANGE NUT	33	001-14082-00	4	BOLT & WASHER
9	389-54600-11	1	STOPPER PLATE	34	001-11063-50	4	BOLT & WASHER
	389-54600-08	1	STOPPER PLATE	35	002-17060-00	4	NUT
10	001-13063-50	1	BOLT & WASHER	36	391-33004-11	2	BATTERY BOLT
11	389-54398-08	1	SPACER		353-59921-08	2	BATTERY BOLT
12	002-17060-00	1	NUT	37	391-33003-21	1	BATTERY RETAINER
13	003-12060-00	2	WASHER		385-54382-08	1	BATTERY RETAINER
14	234-69101-11	1	FUEL TANK	38	385-54416-08	2	BATTERY SUPPORT, Up to #5006355
	234-69101-01	1	FUEL TANK	39	003-20060-00	2	SPRING WASHER
18	064-80004-00	1	FUEL GAUGE	40	002-17060-00	2	NUT
19	043-04300-15	1	FUEL TANK CAP	41	389-54452-08	1	BATTERY CORD (+)
20	014-50500-40	2	C.H. SCREW	42	389-54453-08	1	BATTERY CORD (-)
21	064-13600-10	1	FUEL FILTER	43	056-60002-50	1	CLAMP
22	227-66101-03	1	PLUG COVER	44	001-14061-60	2	BOLT & WASHER
23	391-39000-13	4	RUBBER WASHER (TANK)	45	002-19040-00	1	NUT
			(Use Bolt: 011-00602-20) Aft. #5012013		002-19060-00	1	NUT
	391-39000-03	4	RUBBER WASHER (TANK)		391-49002-03	1	NUT
			(Use Bolt: 011-00601-80)	46	003-20040-00	1	SPRING WASHER
	352-54327-08	4	RUBBER WASHER				
24	011-00602-20	4	FLANGE BOLT				
	011-00601-80	4	FLANGE BOLT				
	011-00601-80	2	FLANGE BOLT				

Note:  
Fig. 23 is interchangeable in combination with Fig. 24

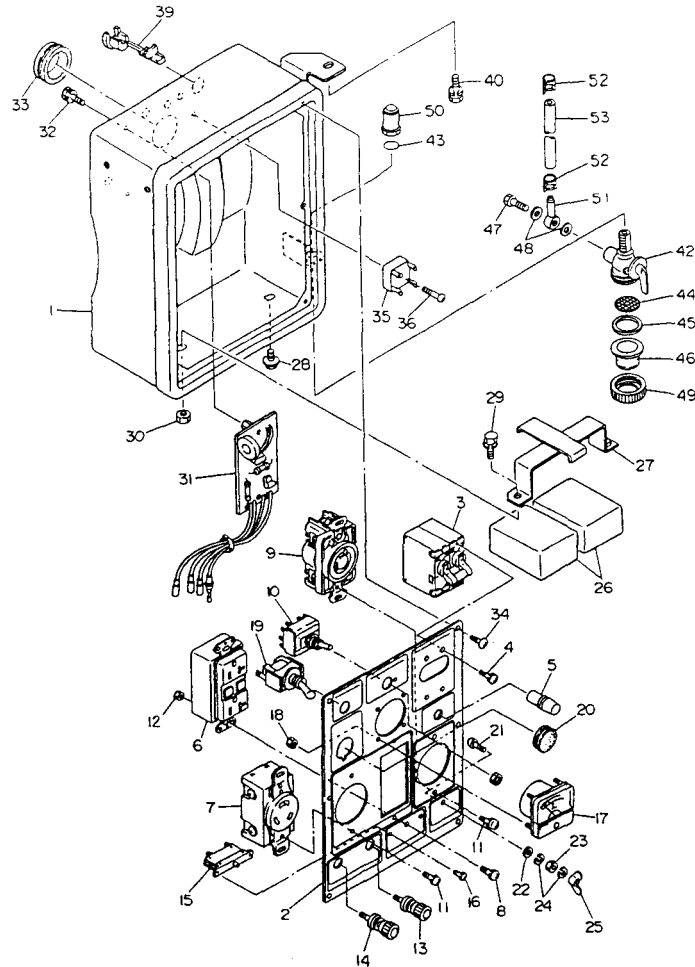


Fig.	Part No.	Qty. Used	Description	Fig.	Part No.	Qty. Used	Description
1	389-80102-00	1	CONTROL BOX ASSY. (Incl. Figs. 1~36)	25	353-49901-08	1	WING NUT
	389-80002-01	1	CONTROL BOX	26	376-22000-03	2	CONDENSER
2	389-81151-00	1	CONTROL PANEL ASSY. (Incl. Figs. 2~25)	27	387-45002-01	1	CONDENSER BRACKET
	389-81051-01	1	CONTROL PANEL	28	011-00600-10	1	FLANGE BOLT
3	392-43002-03	1	CIRCUIT BREAKER (250V-14A)	29	391-49001-03	1	BOLT & WASHER
4	004-35030-60	4	SCREW & WASHER	30	002-27060-00	1	NUT
5	320-75173-08	1	NEON LAMP	31	388-30603-08	1	IDLE CONTROL UNIT
6	390-45750-08	1	AC RECEPTACLE (120V-20A)	32	004-35041-00	2	SCREW & WASHER
7	356-45711-08	1	AC RECEPTACLE (125V-30A)	33	389-89001-03	1	GROMMET
8	004-35041-00	2	SCREW & WASHER	34	353-49904-08	6	TAPPING SCREW
9	353-45724-08	1	AC RECEPTACLE (125/250V-20A)	35	353-45804-08	1	DIODE STACK
10	355-45613-08	1	SWITCH	36	015-00400-70	1	TAPPING SCREW
11	356-59937-08	4	SCREW	39	363-56000-08	1	CORD BUSH
12	002-17040-00	2	NUT	40	001-14061-60	1	BOLT & WASHER
13	363-45701-08	1	TERMINAL BOLT (RED)	42	064-20023-11	1	FUEL STRAINER (Incl. Fig. 42 ~ 49)
14	363-45700-08	1	TERMINAL BOLT (BLACK)	43	064-20003-30	1	O RING
15	352-45620-08	1	CIRCUIT BREAKER (10A)	44	064-20002-20	1	FILTER
16	004-35030-60	2	SCREW & WASHER	45	064-20002-30	1	PACKING
17	391-47900-01	1	AC VOLT METER	46	064-20019-10	1	CUP
18	002-17030-00	2	NUT	47	064-20002-40	1	BANJO BOLT
19	344-45615-08	1	SWITCH	48	064-20002-50	2	FIBER PACKING
20	389-47552-08	1	GROMMET	49	064-20024-10	1	LOCK NUT
21	356-49907-08	1	SCREW	50	053-30900-20	1	NUT (JOINT)
22	353-49903-08	1	WASHER	51	052-10700-42	1	BANJO
23	353-49902-08	1	NUT	52	056-11100-20	2	HOSE CLAMP
24	332-00050-08	2	SPRING WASHER	53	085-10600-00	1	RUBBER PIPE (6X12X190mm)

# 3-2. CONTROL BOX

G3500R: From #5005665 to #5019283

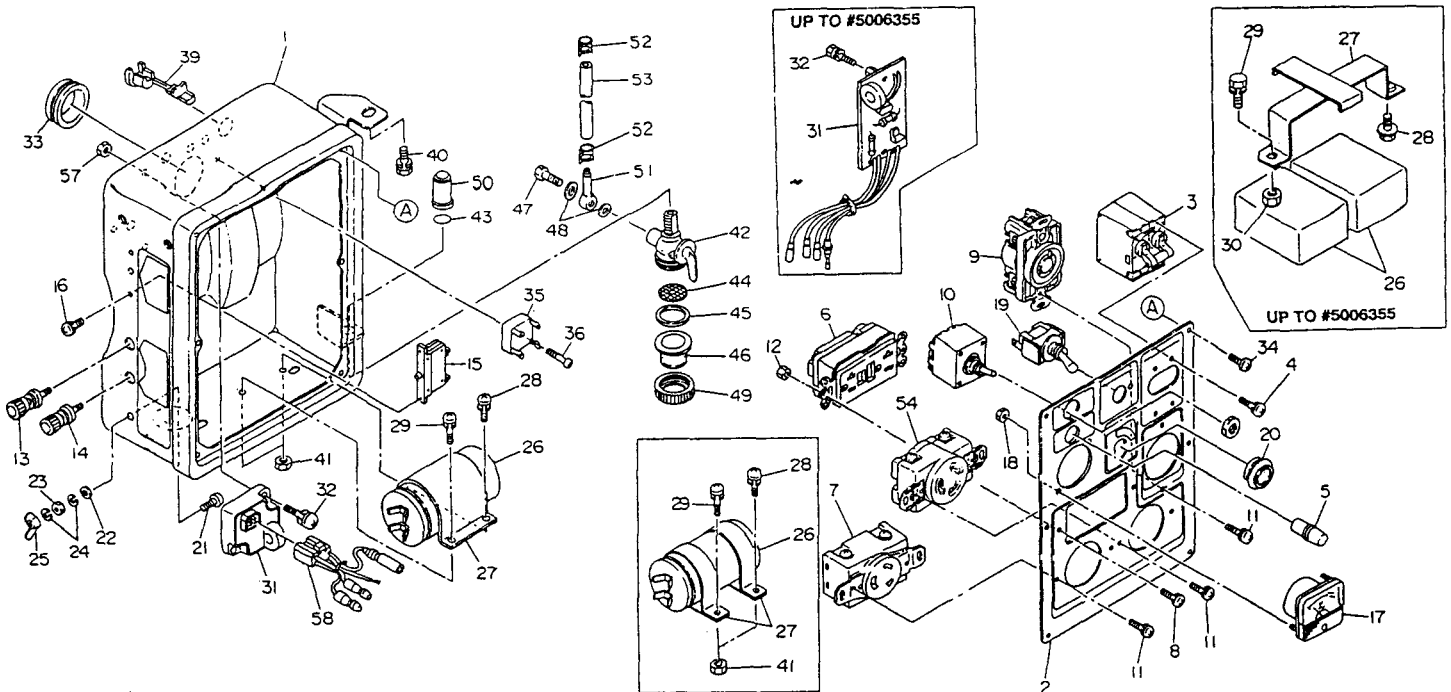


Fig.	Part No.	Qty. Used	Description	Fig.	Part No.	Qty. Used	Description
1	389-80102-20	1	CONTROL BOX ASSY. (Incl. Figs. 1 ~ 36 & 54 ~ 58) Aft. #5006359	24	332-00050-08	2	SPRING WASHER
	389-80102-10	1	CONTROL BOX ASSY. (Incl. Figs. 1 ~ 36 & 54)	25	353-49901-08	1	WING NUT M5
	389-80003-11	1	CONTROL BOX	26	389-05000-01	1	CONDENSER (300VAC-21F) Aft. #5006356
	389-80003-01	1	CONTROL BOX		376-22000-03	2	CONDENSER
2	389-81151-20	1	CONTROL PANEL ASSY. (Incl. Figs. 2~12, 17~20 & 54) Aft. #5006356	27	388-86001-01	1	CONDENSER BRACKET
	389-81151-10	1	CONTROL PANEL ASSY. (Incl. Figs. 2 ~ 12, 17 ~ 20 & 54)		380-47531-08	2	CONDENSER BRACKET Aft. #5006356
	389-81051-21	1	CONTROL PANEL		387-45002-01	1	CONDENSER BRACKET
	389-81051-11	1	CONTROL PANEL	28	004-35041-00	2	SCREW & WASHER Aft. #5006356
3	392-43002-03	1	CIRCUIT BREAKER (250V-14A)		011-00600-10	1	FLANGE BOLT
4	004-35030-60	4	SCREW & WASHER	29	389-59989-08	1	SCREW & WASHER M4x16 Aft. #5006356
5	320-75173-08	1	NEON LAMP		391-49001-03	1	BOLT & WASHER
6	388-85001-01	1	AC RECEPTACLE (125V-20A)	30	002-27060-00	1	NUT Up to #5006356
	390-45750-08	1	AC RECEPTACLE (120V-20A)	31	KU3-11015-01	1	IDLE CONTROL UNIT
7	356-45711-08	1	AC RECEPTACLE (125V-30A)		KU3-11010-01	1	IDLE CONTROL UNIT Aft. #5006356
8	004-35041-00	2	SCREW & WASHER		388-30603-08	1	IDLE CONTROL UNIT
9	353-45724-08	1	AC RECEPTACLE (125/250V-20A)	32	004-35062-00	2	SCREW & WASHER Aft. #5006356
10	355-45613-11	1	SWITCH (9P)		004-35041-00	2	SCREW & WASHER
	355-45613-08	1	SWITCH	33	389-89001-03	1	GROMMET
11	356-59937-08	6	SCREW	34	353-49904-08	6	TAPPING SCREW M4x10
12	002-17040-00	2	NUT	35	353-45804-08	1	DIODE STACK
13	363-45701-08	1	TERMINAL BOLT: RED	36	015-00400-70	1	TAPPING SCREW
14	363-45700-08	1	TERMINAL BOLT: BLACK	39	363-56000-08	1	CORD BUSH
15	352-45620-08	1	CIRCUIT BREAKER (10A)	40	001-14061-60	1	BOLT & WASHER
16	004-35030-60	2	SCREW & WASHER	41	002-17040-00	2	NUT Aft. #5006356
17	391-47900-11	1	AC VOLT METER (200V CLASS)	42	064-20023-11	1	FUEL STRAINER (Incl. Figs. 42~49)
	391-47900-01	1	AC VOLT METER (MAX 300V)	43	064-20003-30	1	O RING
18	002-17030-00	2	NUT	44	064-20002-20	1	FILTER
19	344-45615-08	1	SWITCH (IDLE)	45	064-20002-30	1	PACKING
20	389-47552-08	1	GROMMET	46	064-20019-10	1	CUP
21	356-49907-08	1	SCREW M5x14	47	064-20002-40	1	BANJO BOLT
22	353-49903-08	1	WASHER	48	064-20002-50	2	FIBER PACKING
23	353-49902-08	1	NUT M5	49	064-20024-10	1	LOCK NUT
				50	053-30900-20	1	NUT (JOINT)
				51	052-10700-42	1	BANJO
				52	056-11100-20	2	HOSE CLAMP
				53	085-10600-00	1	RUBBER PIPE (6X12X190mm)
				54	389-85001-01	1	AC RECEPTACLE (125V-20A)
				57	002-17060-00	2	NUT Aft. #5014050
				58	389-35001-01	1	WIRE, IDLE CTRL. Aft. #5012013

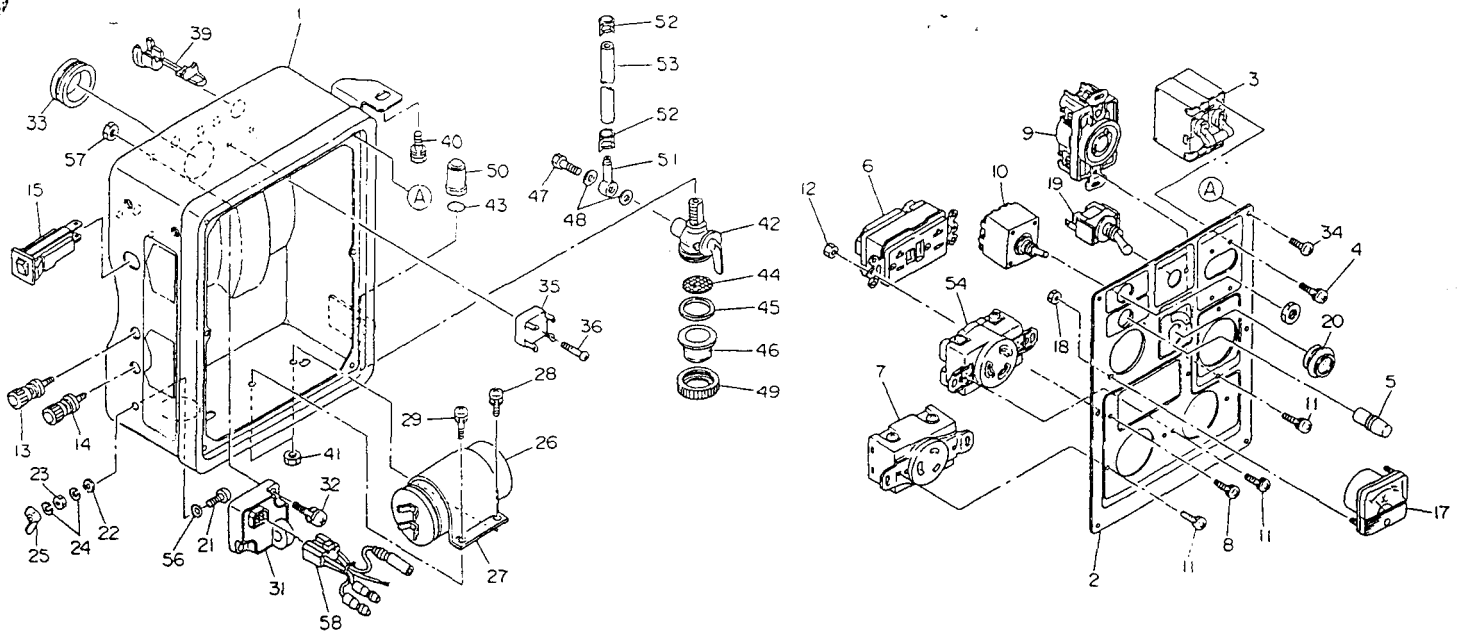


Fig.	Part No.	Qty. Used	Description	Fig.	Part No.	Qty. Used	Description
1	389-80102-30	1	CONTROL BOX ASSY. (Incl. Figs. 1~36 & 54~58)	27	388-86001-01	1	CONDENSER BRACKET
	389-80003-21	1	CONTROL BOX	28	004-35041-00	2	SCREW & WASHER
2	389-81151-30	1	CONTROL PANEL ASSY. (Incl. Figs. 2~12, 17~20 & 54)	29	389-59989-08	1	BOLT & WASHER M4x16
	389-81051-31	1	CONTROL PANEL	31	KU3-11015-01	1	IDLE CONTROL UNIT
3	389-87001-01	1	CIRCUIT BREAKER (250V-14A)	32	004-35062-00	2	SCREW & WASHER
4	004-35030-60	4	SCREW & WASHER	33	389-89001-03	1	GROMMET
5	320-75173-08	1	NEON LAMP	34	353-49904-08	6	TAPPING SCREW M4x10
6	388-85001-01	1	AC RECEPTACLE (125V-20A)	35	353-45804-08	1	DIODE STACK
7	356-45711-08	1	AC RECEPTACLE (125V-30A)	36	015-00400-70	1	TAPPING SCREW
8	004-35041-00	2	SCREW & WASHER	39	363-56000-08	1	CORD BUSH
9	353-45724-08	1	AC RECEPTACLE (125/250V-20A)	40	001-14061-60	1	BOLT & WASHER
10	389-85501-01	1	SWITCH (9P)	41	002-17040-00	2	NUT
11	356-59937-08	6	SCREW	42	064-20023-11	1	FUEL STRAINER (Incl. Figs.42~49)
12	002-17040-00	2	NUT	43	064-20003-30	1	O RING
13	363-45701-08	1	TERMINAL BOLT (RED)	44	064-20002-20	1	FILTER
14	363-45700-08	1	TERMINAL BOLT (BLACK)	45	064-20002-30	1	PACKING
15	388-87002-01	1	CIRCUIT BREAKER (10A)	46	064-20019-10	1	CUP
17	391-47900-11	1	AC VOLT METER (200V CLASS)	47	064-20002-40	1	BANJO BOLT
18	002-17030-00	2	NUT	48	064-20002-50	2	FIBER PACKING
19	344-45615-08	1	SWITCH, IDLE	49	064-20024-10	1	LOCK NUT
20	389-47552-08	1	GROMMET	50	053-30900-20	1	NUT (JOINT)
21	356-49907-08	1	SCREW M5x14	51	052-10700-42	1	BANJO
22	353-49903-08	1	WASHER	52	056-11100-20	2	HOSE CLAMP
23	353-49902-08	1	NUT M5	53	085-10600-00	1	RUBBER PIPE (6X12X190mm)
24	332-00050-08	2	SPRING WASHER	54	389-85001-01	1	AC RECEPTACLE (125V-20A)
25	353-49901-08	1	WING NUT M5	56	003-30050-00	1	LOCK WASHER
26	389-05000-01	1	CONDENSER (300VAC-21F)	57	002-17060-00	2	NUT
				58	389-35001-01	1	WIRE, IDLE CONTROL

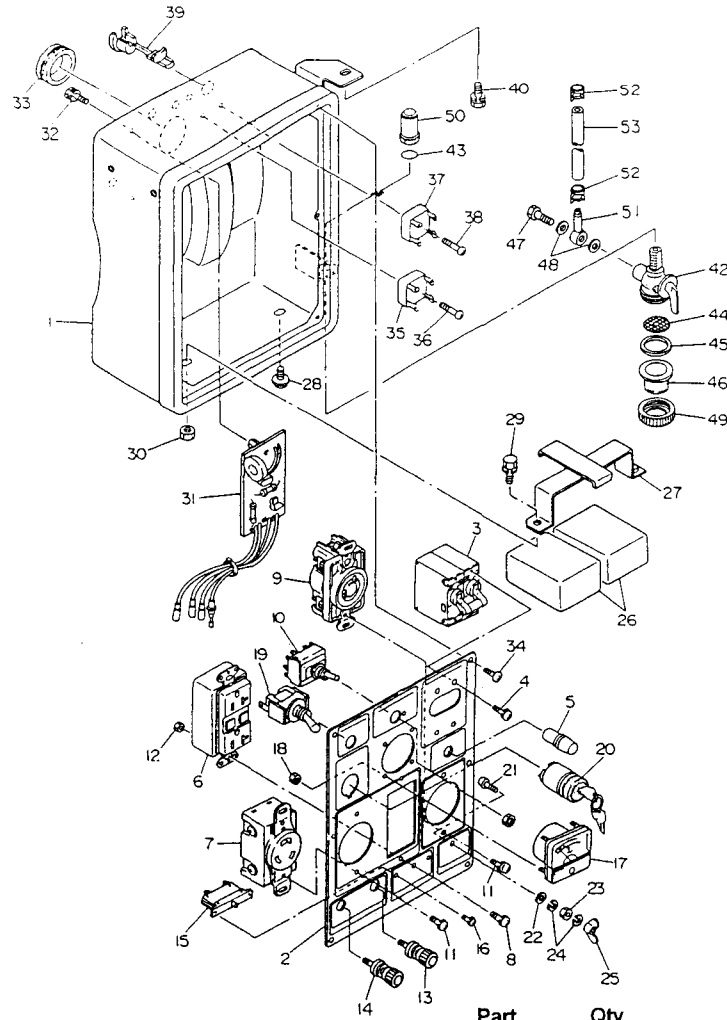


Fig.	Part No.	Qty. Used	Description	Fig.	Part No.	Qty. Used	Description
1	389-80002-00	1	CONTROL BOX ASSY. (Incl.Figs.1~38)	26	376-22000-03	2	CONDENSER
	389-80002-01	1	CONTROL BOX	27	387-45002-01	1	CONDENSER BRACKET
2	389-81051-00	1	CONTROL PANEL ASSY. (Incl.Figs.2~25)	28	011-00600-10	1	FLANGE BOLT
	389-81051-01	1	CONTROL PANEL	29	391-49001-03	1	BOLT & WASHER
3	392-43002-03	1	CIRCUIT BREAKER (250V-14A)		002-27060-00	1	NUT
4	004-35030-60	4	SCREW & WASHER	31	388-30603-08	1	IDLE CONTROL UNIT
5	320-75173-08	1	NEON LAMP	32	004-35041-00	2	SCREW & WASHER
6	390-45750-08	1	AC RECEPTACLE (120V-20A)	33	389-89001-03	1	GROMMET
7	356-45711-08	1	AC RECEPTACLE (125V-30A)	34	353-49904-08	6	TAPPING SCREW
8	004-35041-00	2	SCREW & WASHER	35	353-45804-08	1	DIODE STACK
9	353-45724-08	1	AC RECEPTACLE (125/250V-20A)	36	015-00400-70	1	TAPPING SCREW
10	355-45613-08	1	SWITCH	37	363-45803-08	1	DIODE STACK
11	356-59937-08	4	SCREW	38	015-00300-10	1	TAPPING SCREW
12	002-17040-00	2	NUT	39	363-56000-08	1	CORD BUSH
13	363-45701-08	1	TERMINAL BOLT (RED)	40	001-14061-60	1	BOLT & WASHER
14	363-45700-08	1	TERMINAL BOLT (BLACK)	42	064-20023-11	1	FUEL STRAINER (Incl.Figs.42~49)
15	352-45620-08	1	CIRCUIT BREAKER (10A)	43	064-20003-30	1	O RING
16	004-35030-60	2	SCREW & WASHER	44	064-20002-20	1	FILTER
17	391-47900-01	1	AC VOLT METER	45	064-20002-30	1	PACKING
18	002-17030-00	2	NUT	46	064-20019-10	1	CUP
19	344-45615-08	1	SWITCH	47	064-20002-40	1	BANJO BOLT
20	066-00001-11	1	SWITCH	48	064-20002-50	2	FIBER PACKING
21	356-49907-08	1	SCREW	49	064-20024-10	1	LOCK NUT
22	353-49903-08	1	WASHER	50	053-30900-20	1	NUT (JOINT)
23	353-49902-08	1	NUT	51	052-10700-42	1	BANJO
24	332-00050-08	2	SPRING WASHER	52	056-11100-20	2	HOSE CLAMP
25	353-49901-08	1	WING NUT	53	085-10600-00	1	RUBBER PIPE (6X12X190mm)



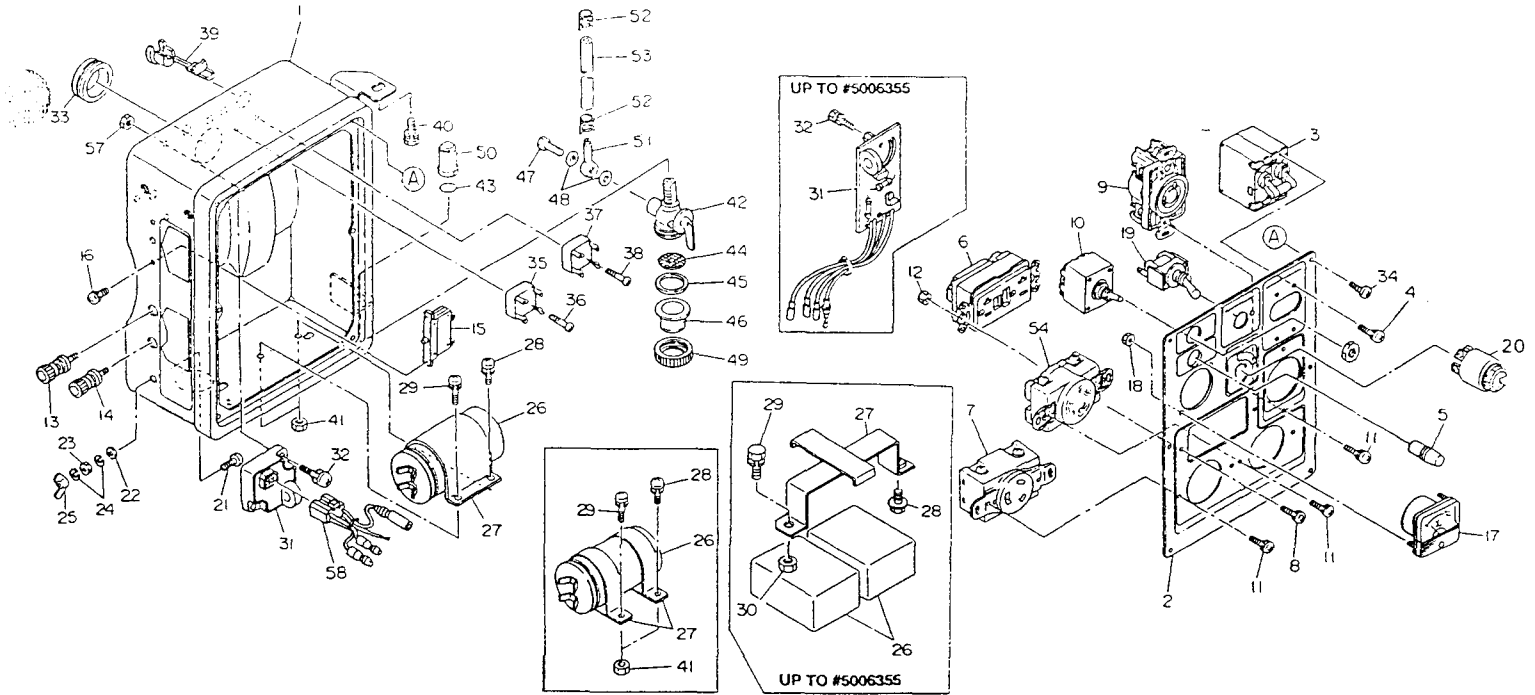


Fig.	Part No.	Qty. Used	Description	Fig.	Part No.	Qty. Used	Description
1	389-80002-20	1	CONTROL BOX ASSY. Aft. #5006356	27	388-86001-01	1	CONDENSER BRACKET
	389-80002-10	1	CONTROL BOX ASSY. (Incl. Figs. 1~38, 41, 54~58)		380-47531-08	2	CONDENSER BRACKET, Aft. #5006356
	389-80003-11	1	CONTROL BOX		387-45002-01	1	CONDENSER BRACKET
	389-80003-01	1	CONTROL BOX	28	004-35041-00	1	SCREW & WASHER M4x16
2	389-81051-20	1	CONTROL PANEL ASSY. (Incl. Figs. 2~12, 17~20, 54) Aft. #5006356				Aft. #5006356
	389-81051-10	1	CONTROL PANEL ASSY. (Incl. Figs. 2~12, 17~20, 54)		011-00600-10	1	FLANGE BOLT
	389-81051-21	1	CONTROL PANEL Aft. #5014050	29	389-59989-08	1	SCREW & WASHER M4x16
	389-81051-11	1	CONTROL PANEL				Aft. #5006356
3	392-43002-03	1	CIRCUIT BREAKER (250V-14A)		391-49001-03	1	BOLT & WASHER
4	004-35030-60	4	SCREW & WASHER	30	002-27060-00	1	NUT Upto #5006355
5	320-75173-08	1	NEON LAMP	31	KU3-11015-01	1	IDLE CONTROL UNIT
6	388-85001-01	1	AC RECEPTACLE (125V-20A)		KU3-11010-01	1	IDLE CONTROL UNIT
	390-45750-08	1	AC RECEPTACLE (120V-20A)				Aft. #5006356
7	356-45711-08	1	AC RECEPTACLE (125V-30A)		388-30603-08	1	IDLE CONTROL UNIT
8	004-35041-00	2	SCREW & WASHER	32	004-35062-00	2	SCREW & WASHER, Aft. #5006356
9	353-45724-08	1	AC RECEPTACLE (125/250V-20A)		004-35041-00	2	SCREW & WASHER
10	355-45613-11	1	SWITCH (9P)	33	389-89001-03	1	GROMMET
	355-45613-08	1	SWITCH	34	353-49904-08	6	TAPPING SCREW M4x10
11	356-59937-08	6	SCREW	35	353-45804-08	1	DIODE STACK
12	002-17040-00	2	NUT	36	015-00400-70	1	TAPPING SCREW
13	363-45701-08	1	TERMINAL BOLT (RED)	37	363-45803-08	1	DIODE STACK
14	363-45700-08	1	TERMINAL BOLT (BLACK)	38	015-00300-10	1	TAPPING SCREW
15	352-45620-08	1	CIRCUIT BREAKER (10A)	39	363-56000-08	1	CORD BUSH
16	004-35030-60	2	SCREW & WASHER	40	001-14061-60	1	BOLT & WASHER
17	391-47900-11	1	AC VOLT METER (200V CLASS)	41	002-17040-00	2	NUT Aft. #5006356
	391-47900-01	1	AC VOLT METER (MAX 300V)	42	064-20023-11	1	FUEL STRAINER (Incl. Figs. 42~49)
18	002-17030-00	2	NUT	43	064-20003-30	1	O RING
19	344-45615-08	1	SWITCH, IDLE CONTROL	44	064-20002-20	1	FILTER
20	066-00003-30	1	STARTER SWITCH Aft. #5014050	45	064-20002-30	1	PACKING
	066-00001-11	1	STARTER SWITCH	46	064-20019-10	1	CUP
21	356-49907-08	1	SCREW M5x14	47	064-20002-40	1	BANJO BOLT
22	353-49903-08	1	WASHER	48	064-20002-50	2	FIBER PACKING
23	353-49902-08	1	NUT M5	49	064-20024-10	1	LOCK NUT
24	332-00050-08	2	SPRING WASHER	50	053-30900-20	1	NUT (JOINT)
25	353-49901-08	1	WING NUT M5	51	052-10700-42	1	BANJO
26	389-05000-01	1	CONDENSER (300VAC-21F) Aft. #5006356	52	056-11100-20	2	HOSE CLAMP
	376-22000-03	2	CONDENSER	53	085-10600-00	1	RUBBER PIPE (6X12X190mm)
				54	389-85001-01	1	AC RECEPTACLE (125V-20A)
				57	002-17060-00	2	NUT
				58	389-35001-01	1	WIRE, IDLE CTRL. Aft. #5012013

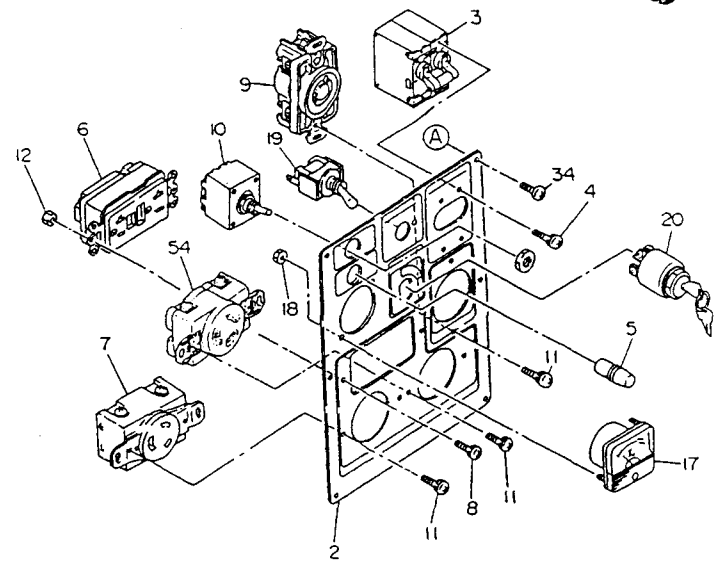
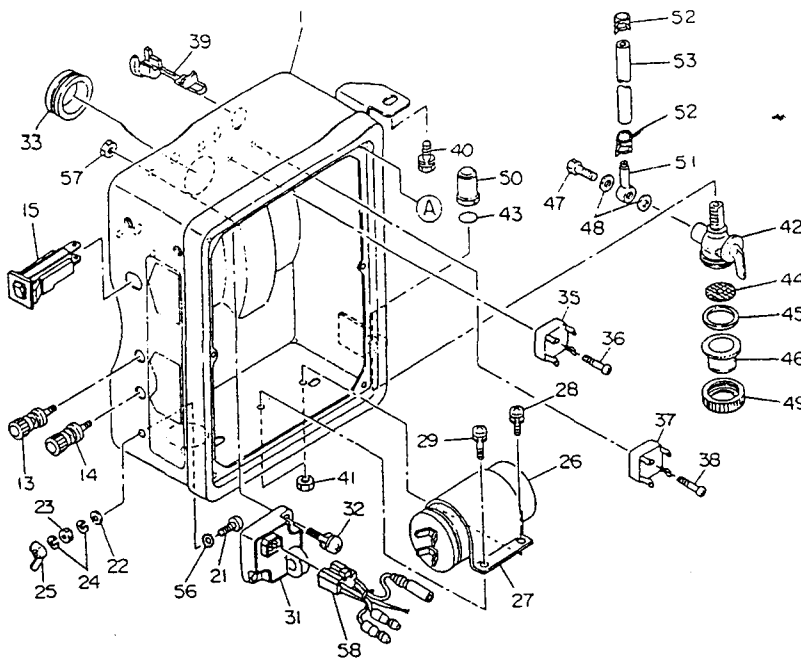


Fig.	Part No.	Qty. Used	Description	Fig.	Part No.	Qty. Used	Description
1	389-80002-30	1	CONTROL BOX ASSY. (Incl. Figs. 1~38, & 54~58)	28	004-35041-00	1	SCREW & WASHER
	389-80003-21	1	CONTROL BOX	29	389-59989-08	1	SCREW & WASHER M4x16
2	389-81051-30	1	CONTROL PANEL ASSY. (Incl. Figs. 2~12, 17~20 & 54)	31	KU3-11015-01	1	IDLE CONTROL UNIT
	389-81051-31	1	CONTROL PANEL	32	004-35062-00	2	SCREW & WASHER
3	389-87001-01	1	CIRCUIT BREAKER (250V-14A)	33	389-89001-03	1	GROMMET
4	004-35030-60	4	SCREW & WASHER	34	353-49904-08	6	TAPPING SCREW M4x10
5	320-75173-08	1	NEON LAMP	35	353-45804-08	1	DIODE STACK
6	388-85001-01	1	AC RECEPTACLE (125V-20A)	36	015-00400-70	1	TAPPING SCREW
7	356-45711-08	1	AC RECEPTACLE (125V-30A)	37	363-45803-08	1	DIODE STACK
8	004-35041-00	2	SCREW & WASHER	38	015-00300-10	1	TAPPING SCREW
9	353-45724-08	1	AC RECEPTACLE (125/250V-20A)	39	363-56000-08	1	CORD BUSH
10	389-85501-01	1	SWITCH (9P)	40	001-14061-60	1	BOLT & WASHER
11	356-59937-08	6	SCREW	41	002-17040-00	2	NUT
12	002-17040-00	2	NUT	42	064-20023-11	1	FUEL STRAINER (Incl. Figs. 42~49)
13	363-45701-08	1	TERMINAL BOLT (RED)	43	064-20003-30	1	O RING
14	363-45700-08	1	TERMINAL BOLT (BLACK)	44	064-20002-20	1	FILTER
15	388-87002-01	1	CIRCUIT BREAKER (10A)	45	064-20002-30	1	PACKING
17	391-47900-11	1	AC VOLT METER (200V CLASS)	46	064-20019-10	1	CUP
18	002-17030-00	2	NUT	47	064-20002-40	1	BANJO BOLT
19	344-45615-08	1	SWITCH, IDLE CONTROL	48	064-20002-50	2	FIBER PACKING
20	066-00003-30	1	STARTER SWITCH	49	064-20024-10	1	LOCK NUT
21	356-49907-08	1	SCREW M5x14	50	053-30900-20	1	NUT (JOINT)
22	353-49903-08	1	WASHER	51	052-10700-42	1	BANJO
23	353-49902-08	1	NUT M5	52	056-11100-20	2	HOSE CLAMP
24	332-00050-08	2	SPRING WASHER	53	085-10600-00	1	RUBBER PIPE (6X12X190mm)
25	353-49901-08	1	WING NUT M5	54	389-85001-01	1	AC RECEPTACLE (125V-20A)
26	389-05000-01	1	CONDENSER (300VAC-21F)	56	003-30050-00	1	LOCK WASHER
27	388-86001-01	1	CONDENSER BRACKET	57	002-17060-00	2	NUT
				58	389-35001-01	1	WIRE, IDLE CONTROL

# 4. CRANKCASE AND CYLINDER HEAD

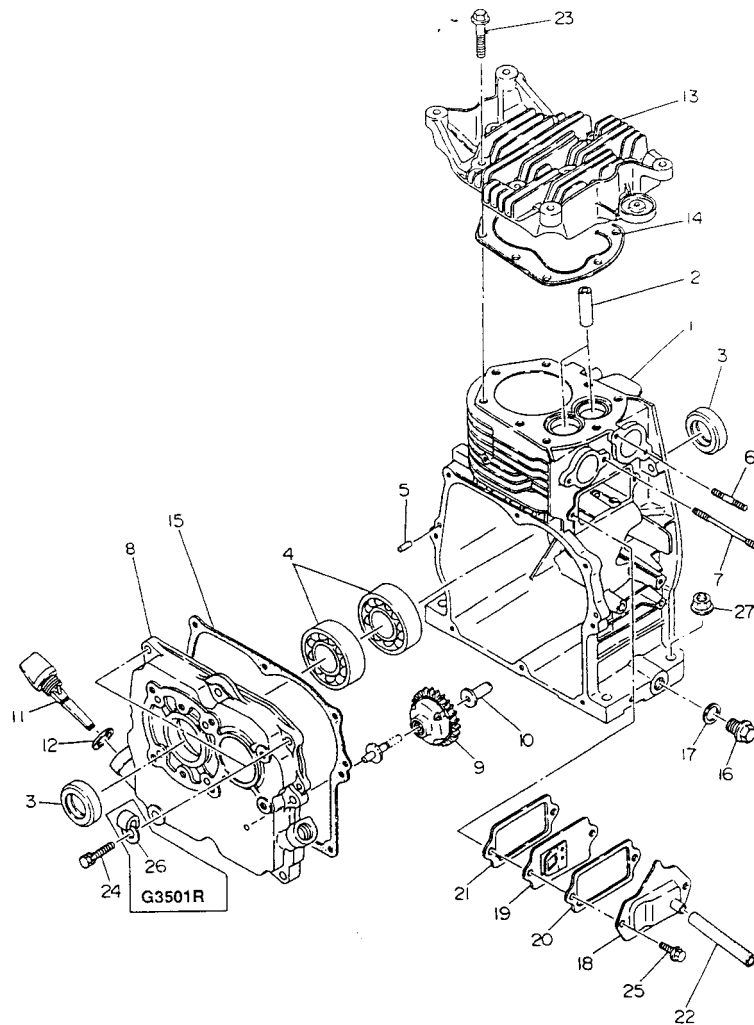
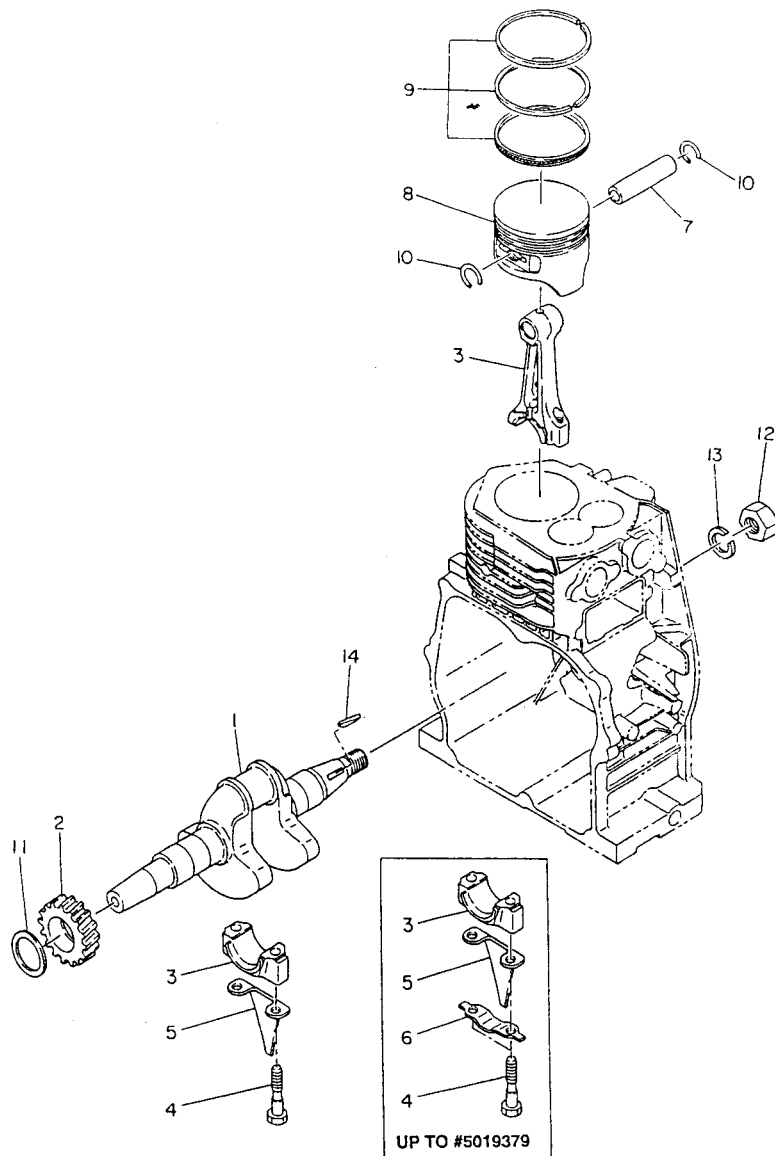


Fig.	Part No.	Qty. Used	Description		Fig.	Part No.	Qty. Used	Description
1	234-10101-31	1	CRANKCASE	G3500R	12	021-31600-20	1	GASKET
			(Incl. Figs. 2~7)			021-31600-10	1	GASKET
	234-10101-21	1	CRANKCASE	G3500R	13	234-13102-03	1	CYLINDER HEAD
			(Incl. Figs. 2~7)		14	234-15001-01	1	HEAD GASKET
	234-10102-31	1	CRANKCASE	G3501R	15	234-16001-03	1	GASKET, BEARING COVER
			(Incl. Figs. 2~7)		16	040-11400-30	2	PLUG
	234-10102-21	1	CRANKCASE	G3501R	17	021-11400-20	2	GASKET
			(Incl. Figs. 2~7)		18	234-14302-11	1	TAPPET COVER
2	227-14202-03	2	VALVE GUIDE, Oversize		19	234-14401-01	1	BREATHER PLATE
3	044-03000-30	2	OIL SEAL		20	234-16006-03	1	TAPPET COVER GASKET
4	060-03000-20	2	BALL BEARING		21	234-16007-03	1	GASKET, BREATHER PLATE
5	031-00600-20	2	DOWEL PIN		22	085-10800-00	1	RUBBER PIPE (8x11x75mm)
6	010-50802-90	2	STUD, MUFFLER		23	011-00800-10	8	FLANGE BOLT
7	010-50601-91	2	STUD, CARBURETOR		24	001-14082-80	8	BOLT & WASHER
8	234-11001-01	1	MAIN BEARING COVER		25	011-00600-20	2	FLANGE BOLT
			(Incl. Figs. 3 & 4)		26	056-60001-70	2	CLAMP
9	234-45001-01	1	GOVERNOR GEAR		27	002-38080-00	2	FLANGE NUT
10	205-41901-03	1	GOVERNOR SLEEVE		*	234-99001-07	1	GASKET SET
11	227-63601-03	1	OIL GAUGE					(Incl. Figs. 12, 14, 15, 20, 21 & Section 6 Figs. 10, 17, 19 & 20)

# 5. CRANKSHAFT AND PISTON



UP TO #5019379

Fig.	Part No.	Qty. Used	Description	Fig.	Part No.	Qty. Used	Description
1	234-20701-11	1	CRANKSHAFT (Incl. Fig. 2)	8	234-23401-03	1	PISTON STD
	234-20701-01	1	CRANKSHAFT (Incl. Fig. 2)		234-23402-03	1	PISTON Oversize (.25mm)
3	234-22501-10	1	CONNECTING ROD ASSY. (Incl. Figs. 4 & 5) Aft. #5019380		234-23403-03	1	PISTON Oversize (.50mm)
	234-22501-00	1	CONNECTING ROD ASSY. (Incl. Figs. 4-6)	9	234-23501-07	1	PISTON RING SET STD
4	227-23001-13	2	CONNECTING ROD BOLT Aft. #5019380		234-23502-07	1	PISTON RING SET Oversize (.25mm)
	234-23001-03	2	CONNECTING ROD BOLT		234-23503-07	1	PISTON RING SET Oversize (.50mm)
5	234-23101-03	1	OIL SCRAPER	10	056-51600-10	2	CLIP
6	234-23201-03	1	ROD LOCK WASHER Upto #5019379	11	023-03001-70	1	SPACER (t=0.6)
7	234-23301-03	1	PISTON PIN		023-03001-80	1	SPACER (t=0.8)
					023-03001-90	1	SPACER (t=1.0)
				12	002-18180-00	1	NUT, FLYWHEEL (18mm)
				13	003-20180-00	1	SPRING WASHER, FLYWHEEL
				14	032-30300-10	1	WOODRUFF KEY, FLYWHEEL

# 6. INTAKE AND EXHAUST

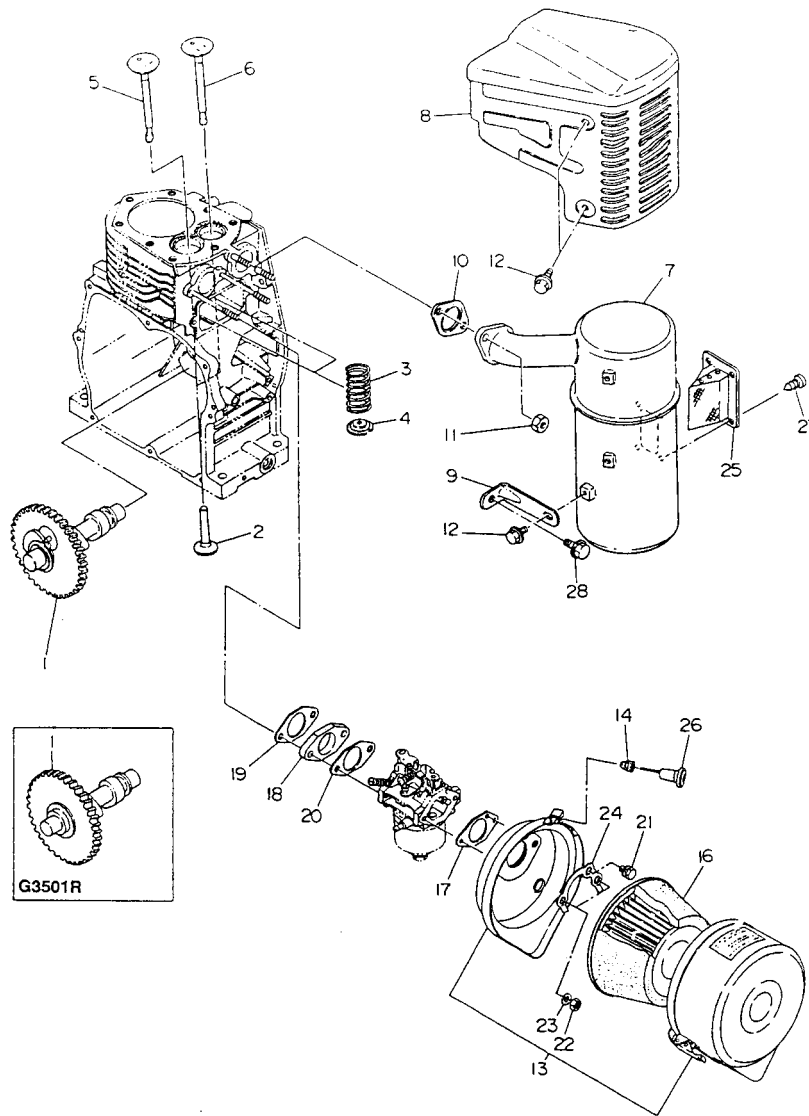


Fig.	Part No.	Qty. Used	Description	Fig.	Part No.	Qty. Used	Description
1	234-31901-00	1	CAMSHAFT	16	234-32604-07	1	CLEANER ELEMENT SET
	234-31701-03	1	CAMSHAFT	17	234-36003-08	1	AIR CLEANER GASKET
2	234-33301-03	2	TAPPET	18	234-32901-03	1	INSULATOR
3	227-33601-03	2	VALVE SPRING	19	234-35901-03	1	INSULATOR GASKET
4	234-33701-03	2	SPRING RETAINER	20	234-35902-03	1	INSULATOR GASKET 2
5	234-33401-03	1	INTAKE VALVE	21	001-10061-60	1	BOLT & WASHER
6	234-33501-03	1	EXHAUST VALVE		001-10061-20	1	BOLT & WASHER
7	234-30310-01	1	MUFFLER	22	002-17060-00	2	NUT
8	234-34201-01	1	MUFFLER COVER	23	003-20060-00	2	SPRING WASHER
9	234-35301-01	1	MUFFLER BRACKET	24	234-36501-01	1	LOCK WASHER
10	234-35202-01	1	EXHAUST GASKET	25	234-36601-01	1	SPARK ARRESTER
11	002-19080-00	2	NUT	26	206-43901-01	1	KNOB
12	011-00600-10	5	FLANGE BOLT	27	015-00400-40	4	TAPPING SCREW
13	234-32603-00	1	AIRCLEANER ASSY. (Incl. Figs. 14~17)	28	011-00600-20	1	FLANGE BOLT
14	207-32690-08	1	GROMMET				

# 7. GOVERNOR, OPERATE

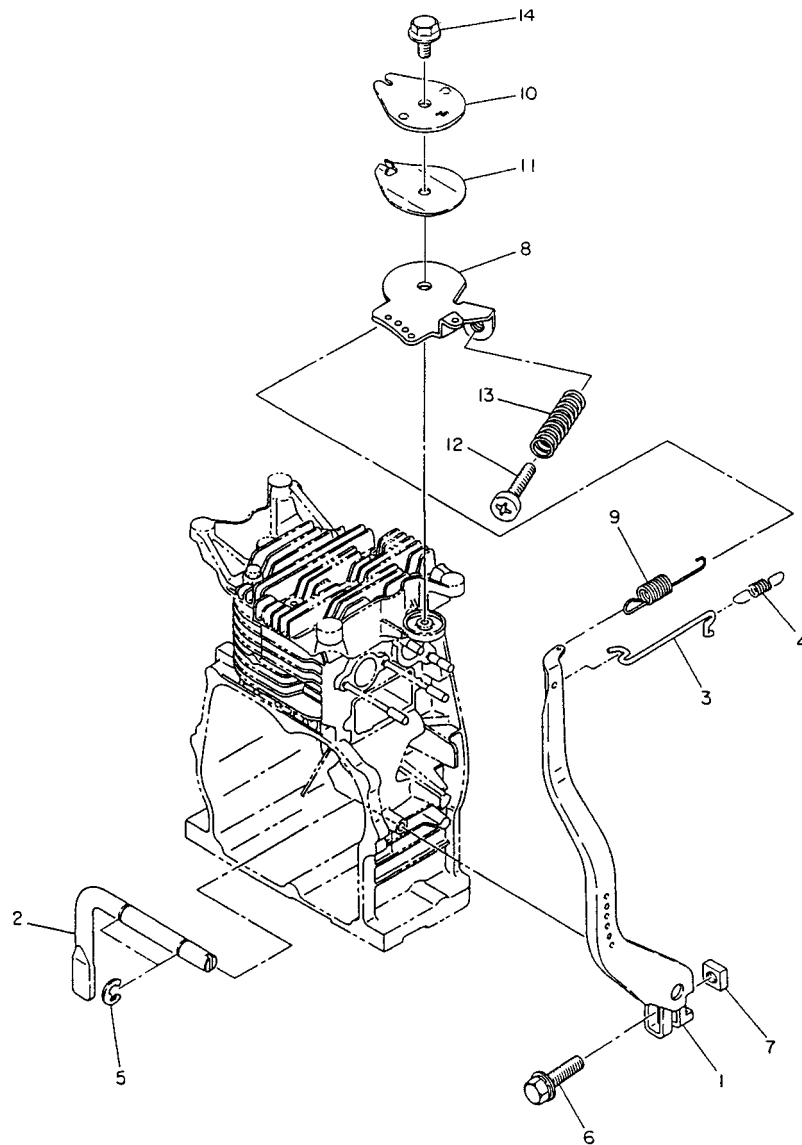


Fig.	Part No.	Qty. Used	Description	Fig.	Part No.	Qty. Used	Description
*	234-42301-07	1	GOVERNOR LEVER & SHAFT KIT (Incl. Figs. 1, 2, & 5~7)	7	018-60600-20	1	NUT
*	234-42501-07	1	GOVERNOR ROD & SPRING KIT (Incl. Figs. 3, 4 & 9)	8	234-43310-01	1	SPEED CONTROL
1	234-42301-01	1	GOVERNOR LEVER	9	234-42501-13	1	GOVERNOR SPRING
2	234-42201-03	1	GOVERNOR SHAFT	10	227-43501-13	1	STOP PLATE
3	234-42701-01	1	GOVERNOR ROD	11	227-43501-01	1	STOP PLATE
4	234-42801-13	1	ROD SPRING	12	227-45002-03	1	SPRING WASHER
5	003-13060-00	2	CLIP	13	004-31065-50	1	P.H. SCREW
6	001-14062-50	1	BOLT & WASHER	14	011-00600-30	1	FLANGE BOLT

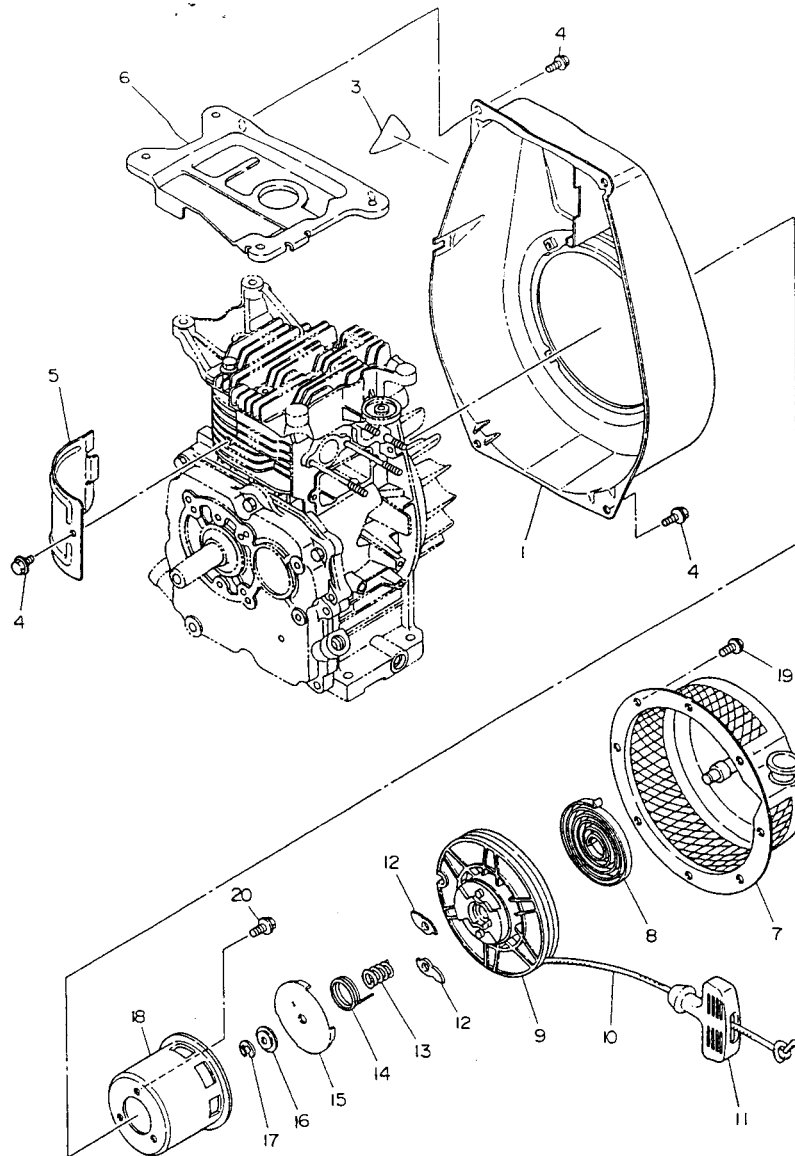


Fig.	Part No.	Qty. Used	Description	Fig.	Part No.	Qty. Used	Description
*	232-50111-07	1	HARDWARE KIT (Incl.Figs.12~17) G3500R	11	206-50101-08	1	HANDLE
1	234-51565-06	1	BLOWER HOUSING G3500R	12	106-50128-18	2	RATCHET
	234-51419-06	1	BLOWER HOUSING G3501R	13	106-50132-08	1	FRICTION SPRING
3	073-20035-50	1	LABEL, STOP SWITCH G3500R	14	106-50136-18	1	RETURN SPRING
4	011-00600-20	10	FLANGE BOLT	15	106-50144-08	1	FRICTION PLATE
5	234-52601-03	1	CYLINDER BAFFLE	16	106-50185-08	1	THRUST WASHER
6	234-52801-13	1	HEAD COVER	17	106-50186-08	1	CLIP
7	234-50211-00	1	RECOIL STARTER ASSY (Incl. Figs. 8~18)	18	234-50145-08	1	STARTING PULLEY
8	106-50116-08	1	SPIRAL SPRING	19	011-00600-10	4	FLANGE BOLT
9	207-50122-18	1	REEL	20	011-00600-20	3	FLANGE BOLT
10	106-50113-08	1	ROPE				

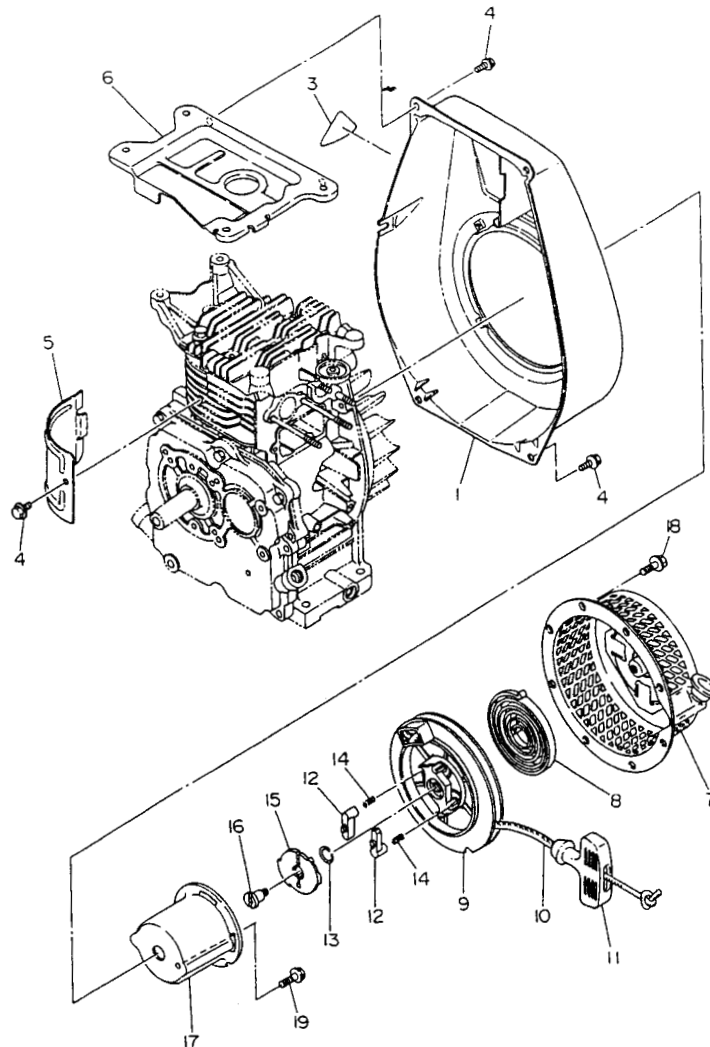


Fig.	Part No.	Qty. Used	Description	Fig.	Part No.	Qty. Used	Description
•	232-50112-07	1	HARDWARE KIT G3500R (Incl. Figs. 8, 12, 13 & 16) Aft. #5012013	9	234-50120-18	1	REEL Aft. #5012013
•	232-50111-07	1	HARDWARE KIT G3500R (Incl. Figs. 8, 12, 13 & 16)	10	234-50111-08	1	ROPE Aft. #5012013
1	234-51565-06	1	BLOWER HOUSING G3500R	106-50113-08	1	ROPE	
	234-51419-06	1	BLOWER HOUSING G3501R	11	206-50101-08	1	HANDLE
3	073-20035-50	1	STOP SWITCH LABEL G3500R	12	161-50125-08	2	RATCHET
4	011-00600-20	10	FLANGE BOLT	13	227-50131-08	1	FRICTION SPRING
5	234-52601-03	1	CYLINDER BAFFLE	14	227-50135-08	2	RETURN SPRING
6	234-52801-13	1	HEAD COVER	15	161-50150-08	1	RATCHET GUIDE
7	234-50221-10	1	RECOIL STARTER ASSY. (Incl. Figs. 8-17) Aft. # 5012013	16	227-50152-08	1	SET SCREW
	234-50221-00	1	RECOIL STARTER ASSY. (Incl. Figs. 8-17) Aft. #5012013	17	234-50146-18	1	STARTING PULLEY Aft. #5012013
8	253-50115-08	1	SPIRAL SPRING Aft. #5012013	234-50146-08	1	STARTING PULLEY	
	215-50515-08	1	SPIRAL SPRING	18	011-00600-10	4	FLANGE BOLT
				19	011-00600-30	1	FLANGE BOLT



# 9. CARBURETOR AND SOLENOID

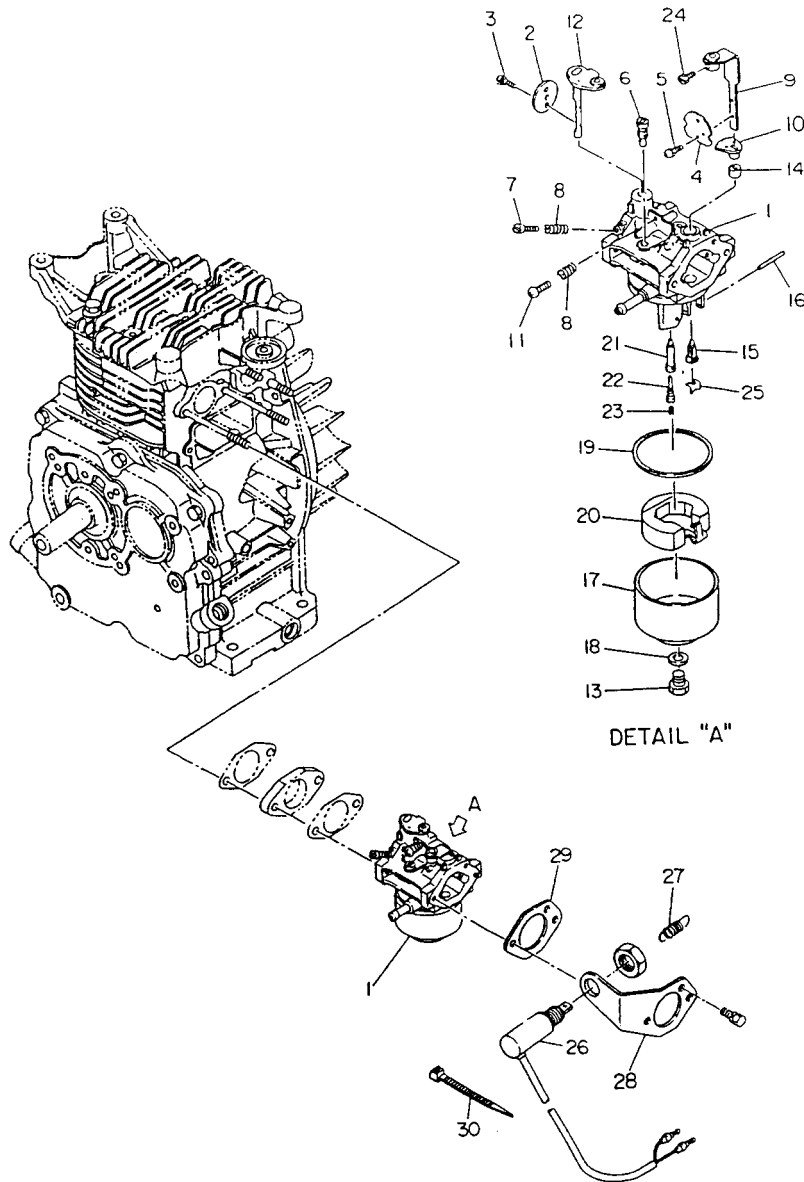


Fig.	Part No.	Qty. Used	Description	Fig.	Part No.	Qty. Used	Description
*	234-62303-07	1	CARBURETOR REPAIR KIT (Incl. Figs. 3,6,13,16,18~20&23)	16	214-62515-08	1	FLOAT PIN
1	234-62326-20	1	CARBURETOR ASSY. (Incl. Figs. 2~25)	17	224-62552-08	1	FLOAT CHAMBER BODY
	234-62326-10	1	CARBURETOR ASSY. (Incl. Figs. 2~25)	18	207-62345-08	1	PACKING
2	213-62537-08	1	THROTTLE VALVE	19	206-62540-08	1	PACKING
3	150-62356-08	2	SCREW & WASHER	20	234-62506-08	1	FLOAT ASSY.
4	234-62525-08	1	CHOKE VALVE		234-62505-08	1	FLOAT ASSY.
5	234-62450-08	2	SCREW	21	234-62440-08	1	NOZZLE
6	128-62420-08	1	PILOT JET	22	234-62425-08	1	PIPE
7	209-62305-08	1	PILOT SCREW	23	234-62401-08	1	MAIN JET (97.5)
8	206-62446-08	2	PILOT SPRING	24	227-62450-08	1	BOLT
9	234-62521-08	1	CHOKE LEVER	25	224-62568-08	1	CLIP
10	234-62550-08	1	RING	26	227-75501-00	1	SOLENOID (12V) Aft. #5006356
11	224-62452-08	1	SCREW		227-75503-00	1	SOLENOID (36V)
12	234-62535-08	1	THROTTLE SHAFT	27	234-78202-03	1	SOLENOID SPRING
13	129-62351-08	1	BOLT		234-78202-01	1	SOLENOID SPRING
14	226-62550-08	1	RING	28	234-78002-01	1	SOLENOID BRACKET
15	224-62312-08	1	NEEDLE VALVE	29	234-36003-03	1	GASKET, AIR CLEANER
	224-62309-08	1	NEEDLE VALVE	30	056-30000-20	1	WIRE BAND

# 10-1. ELECTRIC DEVICE

# G3500R

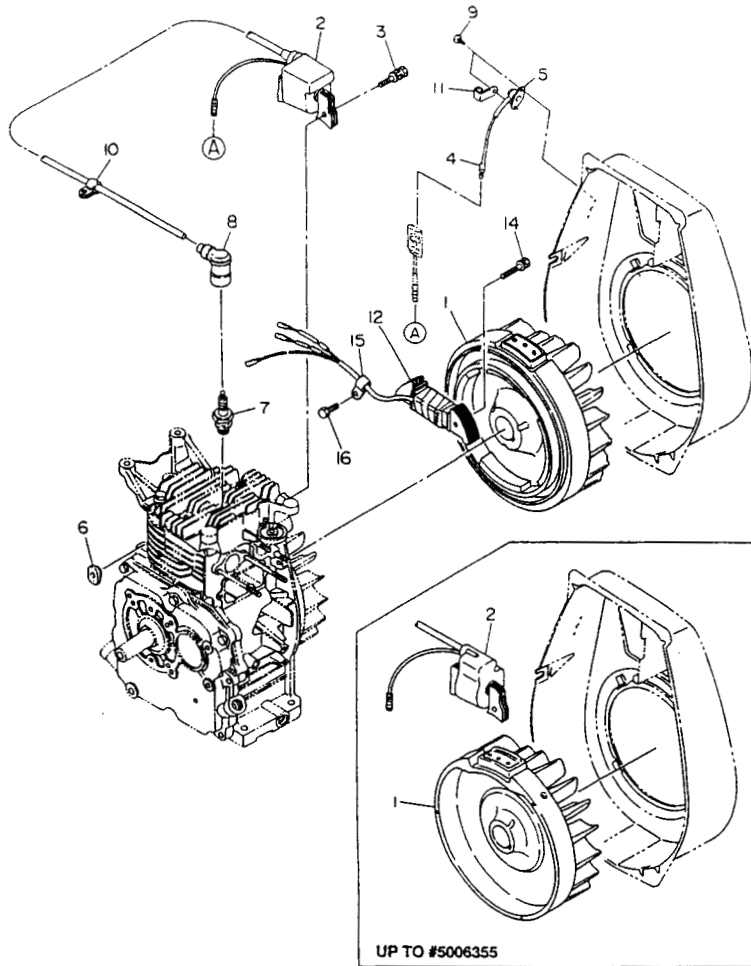


Fig.	Part No.	Qty. Used	Description
1	234-70123-08	1	FLYWHEEL
	234-70121-08	1	FLYWHEEL
2	234-70130-18	1	IGNITION COIL
	234-70130-08	1	IGNITION COIL
3	001-17062-50	2	BOLT & WASHER
4	214-73204-01	1	WIRE 4
	214-73113-11	1	WIRE 13
5	066-20000-11	1	STOP BUTTON
6	226-75501-03	1	GROMMET
7	065-01404-20	1	SPARK PLUG (NGK BPR-6HS)
8	065-50001-10	1	SPARK PLUG CAP
9	015-00400-10	2	TAPPING SCREW (4X8)
10	214-79002-01	1	CLAMP
11	056-60300-10	1	CLAMP
12	234-70140-08	1	LAMP COIL
14	001-17062-50	2	BOLT & WASHER
15	207-75001-01	1	CLAMP
16	015-20600-50	1	TAPPING BOLT

# 10-2. ELECTRIC DEVICE

# G3501R

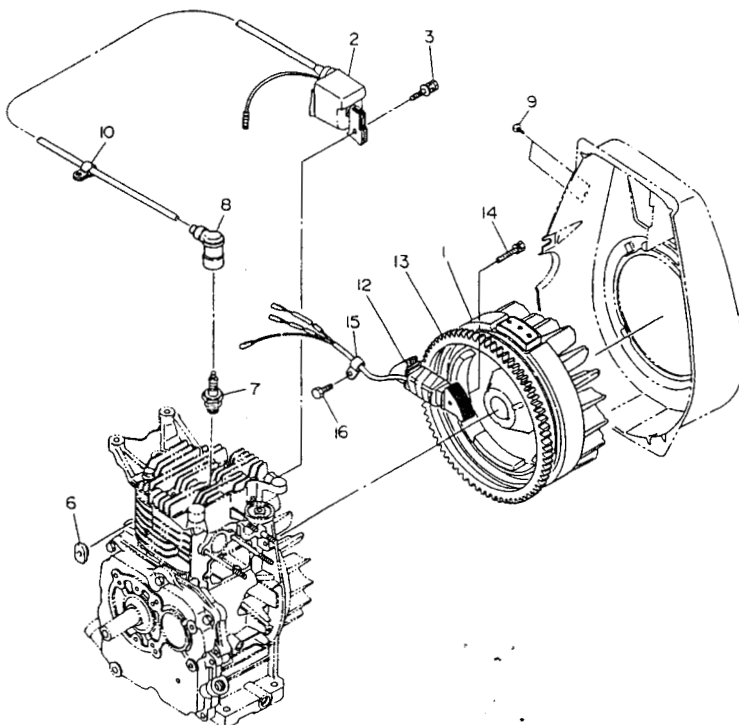


Fig.	Part No.	Qty. Used	Description
1	234-70123-08	1	FLYWHEEL
2	234-70130-18	1	IGNITION COIL
	234-70130-08	1	IGNITION COIL
3	001-17062-50	2	BOLT & WASHER
6	226-75501-03	1	GROMMET
7	065-01404-20	1	SPARK PLUG (NGK BPR-6HS)
8	065-50001-10	1	SPARK PLUG CAP
9	015-00400-10	2	TAPPING SCREW (4X8)
10	214-79002-01	1	CLAMP
12	234-70140-08	1	LAMP COIL
13	234-71002-03	1	RING GEAR
14	001-17062-50	2	BOLT & WASHER
15	207-75001-01	1	CLAMP
16	015-20600-50	1	TAPPING BOLT

# 11-1. OIL SENSOR

Up to #5019283

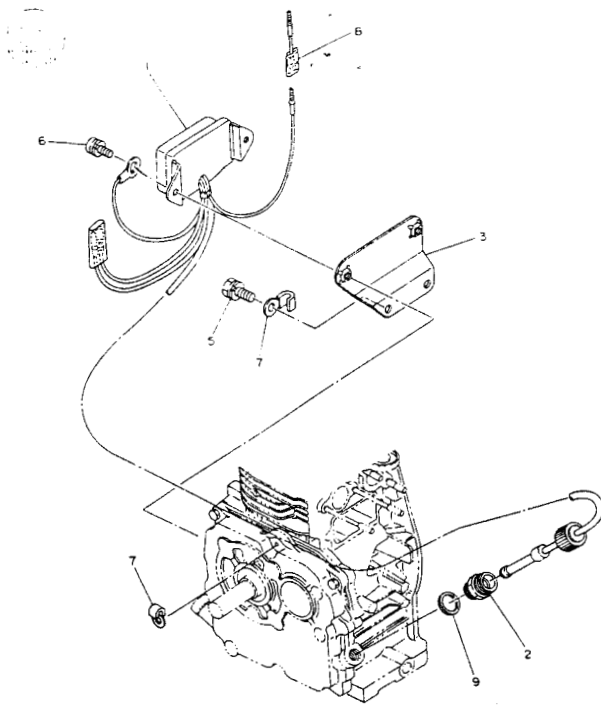


Fig.	Part No.	Qty. Used	Description	
1	234-76104-01	1	OIL LEVER SENSOR	
2	234-76201-03	1	OIL SENSOR JOINT	
3	234-76501-01	1	SENSOR BRACKET	G3500R
	234-76502-01	1	SENSOR BRACKET	G3501R
5	001-10081-60	2	BOLT & WASHER	
6	004-36061-00	2	SCREW & WASHER	
7	207-75001-01	2	CLAMP	
8	214-73122-01	1	WIRE 22	
9	021-31600-10	1	GASKET	

# 11-2. OIL SENSOR

After #5019284

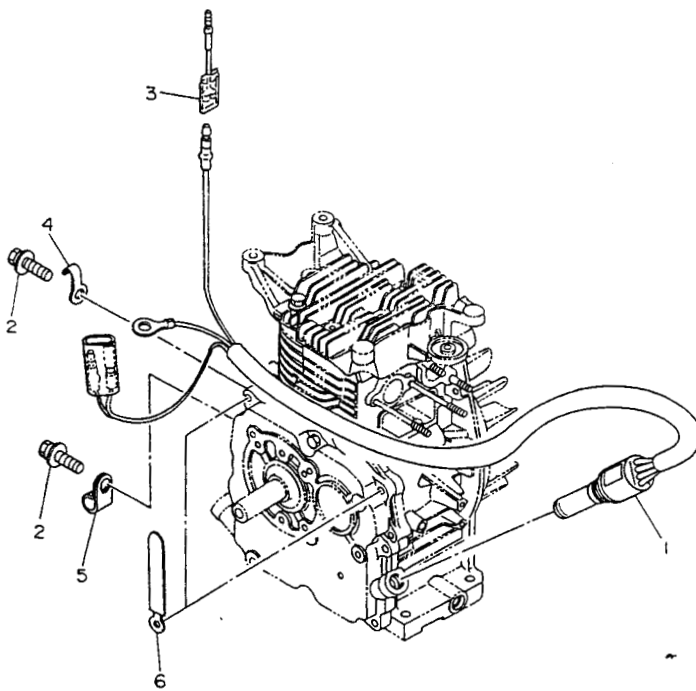


Fig.	Part No.	Qty. Used	Description	
1	KS3-11016-01	1	OIL LEVEL SENSOR	
2	001-10081-60	2	BOLT & WASHER	G3500R
3	214-73122-01	1	WIRE 22	
4	207-75001-01	1	CLAMP	G3500R
5	214-79003-01	1	CLAMP	G3500R
6	056-60001-70	2	CLAMP	

# 12. STARTING MOTOR

G3501R

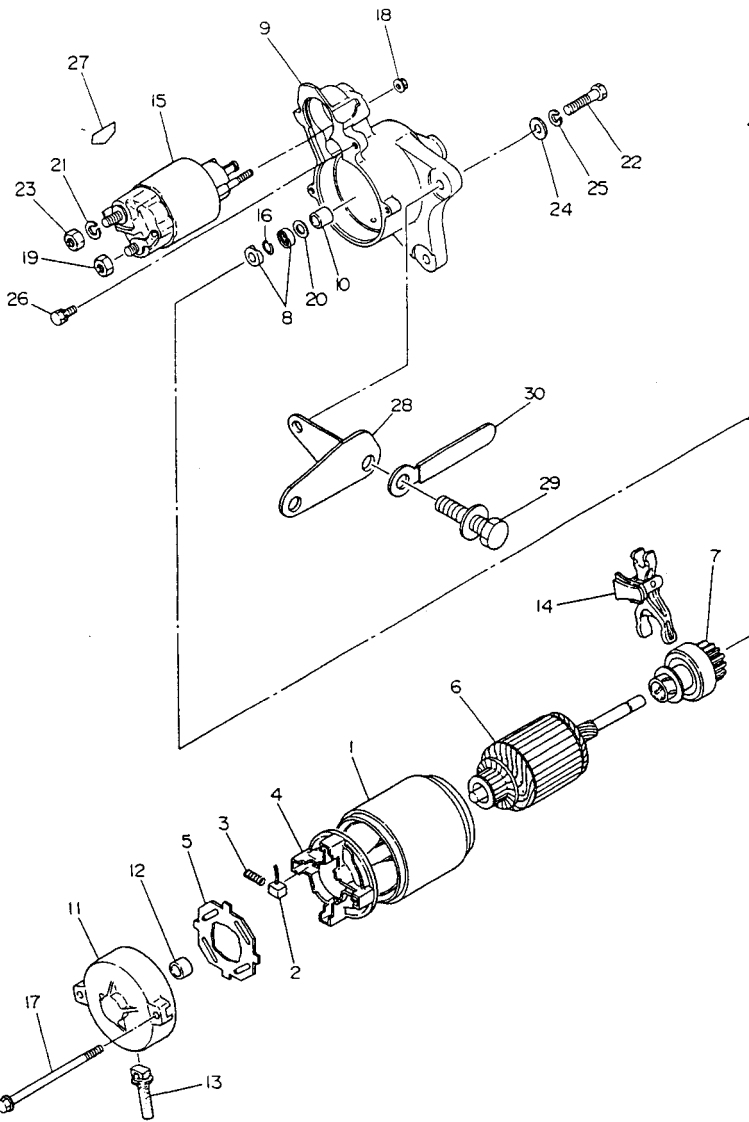


Fig.	Part No.	Qty. Used	Description
1	234-70502-00	1	STARTING MOTOR (Incl. Figs. 1~21)
	209-70550-08	1	YOKE (Incl. Fig. 2)
2	209-70551-08	4	BRUSH
3	209-70545-08	4	BRUSH SPRING
4	209-70530-08	1	BRUSH HOLDER
5	209-70552-08	1	INSULATOR
6	234-70554-08	1	ARMATURE
7	234-70521-08	1	CLUTCH (Incl. Fig. 8)
8	209-70556-08	2	PINION STOPPER
9	234-70500-08	1	HOUSING (Incl. Fig. 10)
10	209-70511-08	1	BUSH
11	234-70505-08	1	FRAME (Incl. Figs. 12 & 13)
12	209-70510-08	1	BUSH
13	209-70555-08	1	COVER
14	209-70525-08	1	LEVER
15	209-70515-08	1	MAGNETIC SWITCH
16	209-70557-08	1	SNAP RING
17	209-70558-08	2	THROUGH BOLT
18	209-70559-08	2	NUT
19	209-70560-08	1	NUT
20	209-70561-08	1	WASHER
21	209-70562-08	1	SPRING WASHER
22	214-79007-01	2	STARTER BOLT
23	002-17080-00	1	NUT
24	003-10080-00	2	WASHER
25	003-20080-00	3	SPRING WASHER
26	001-10061-20	1	BOLT & WASHER
27	073-20010-80	1	BATTERY LABEL
28	234-77001-01	1	MOTOR BRACKET
29	001-10081-60	2	BOLT & WASHER
30	056-60001-70	1	CLAMP

Aft. #5019284  
Aft. #5019284  
Aft. #5019284

# 13. ACCESSORIES

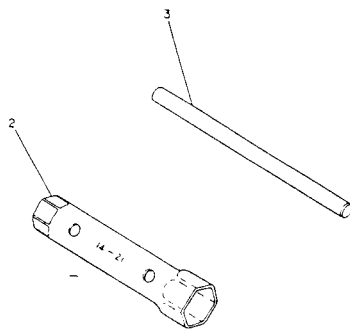


Fig.	Part No.	Qty. Used	Description
2	224-90303-00	1	TOOL KIT (Incl. Fig. 3)