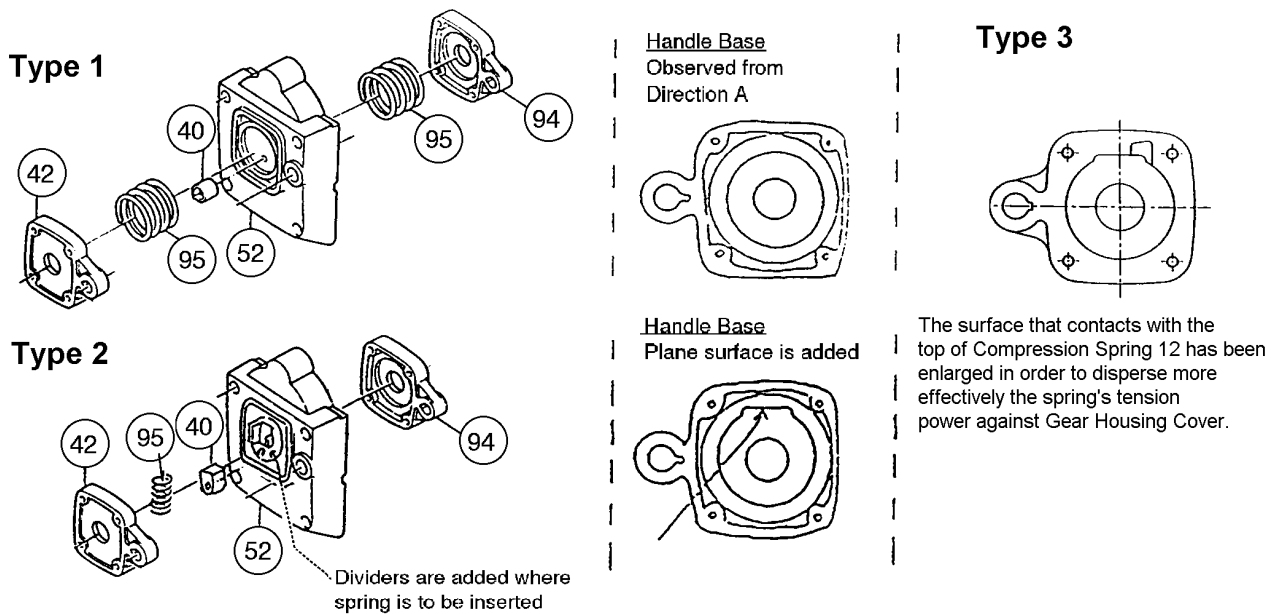


| Item No. | Part No. | No. Used | Description | Item No. | Part No. | No. Used | Description |
|--------------------|------------|----------|--------------------------|----------|----------|----------|--------------------|
| 121 | * | 1 | Tapping Screw 4X18 | A05 | A-90582 | 1 | Hammer Grease 30cc |
| 122 | * | 1 | Handle Sub Base (Type 2) | A06 | 751420-A | 1 | Moil Point |
| 200 | 652014-1 | 4 | P.H. Screw M4x8 | A07 | 751220-A | 1 | Narrow Chisel |
| 201 | 652252-5 | 4 | Clamp Washer | A08 | 751221-A | 1 | 3" Chisel |
| 202 | 654002-4 | 2 | Terminal 1.25-M4 | A09 | 751222-A | 1 | Keen Cut Chisel |
| 203 | 654005-8 | 2 | Terminal 2-M4 | A10 | 751620-A | 1 | 5" Asphalt Cutter |
| Accessories | | | | A11 | 751621-A | 1 | 3" Digging Chisel |
| A01 | 783203-8 | 1 | Hex. Wrench 5 | A12 | 751622-A | 1 | 5-1/2" Clay Spade |
| A02 | 783204-6 | 1 | Hex. Wrench 6 | A13 | 751223-A | 1 | Frost Wedge |
| A03 | 783207-0 | 1 | Hex. Wrench 10 | A14 | 751103-A | 1 | Tamper Shank |
| A04 | 122010-A | 1 | Hammer Cart | A15 | 751710-A | 1 | 6" Tamper Plate |
| | INC. R8321 | 1 | 8" Semi-Pneumatic Wheel | | 751711-A | 1 | 8" Tamper Plate |
| | INC. 963 | 1 | Cotter Pin | | | | |
| | INC. 3108 | 1 | AXLE | | | | |

* SEE SERVICE CHANGES

SERVICE CHANGES

1. Change on Compression Spring, Gear Housing Cover, etc.,



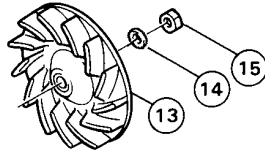
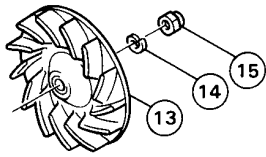
| Item No. | Description | Type 1 | Type 2 | Type 3 |
|----------|--------------------|-----------------------------------|-------------------|----------|
| 40 | Rubber Sleeve 8 | 262526-2 | 262538-5 | |
| 42 | Handle Base | 322481-1 (No Longer Available) | 322847-5 | 324062-7 |
| 94 | | | | |
| 52 | Gear Housing Cover | 316311-6 (No Longer Available) | 316792-4 | |
| 95 | Compression Spring | 233051-0- Size 46 | 233149-3- Size 12 | |
| | Serial No. | N/A | N/A | 18055E ~ |

Above parts are completely interchangeable as a set.

2. Change on Fan, Nut and Washer.

Type 1

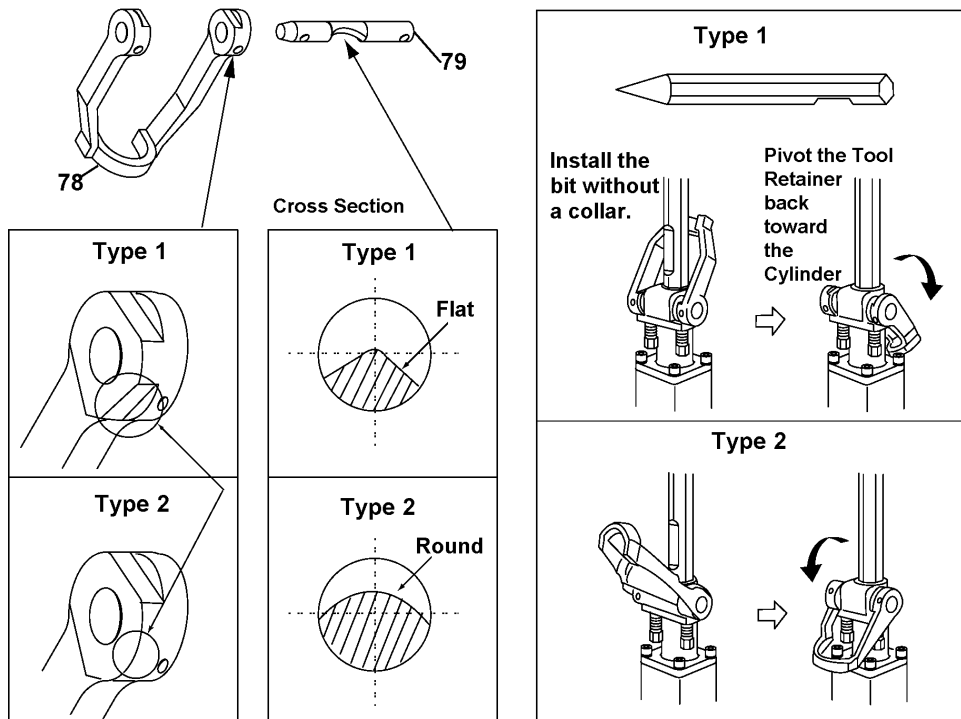
Type 2



| Item No. | Description | Type 1 | Type 2 |
|----------|---------------------------------|---------------------------------------|----------|
| 13 | Fan 100 | 241854-8 (No Longer Available) | 240024-6 |
| 14 | Spring Washer 8 / Flat Washer 8 | 942201-3 | 253165-9 |
| 15 | Hex Lock Nut M8-13/Hex Nut M8 | 252105-4 | 931402-8 |
| | Serial No. | ~ 13058E | 13059E ~ |

Above parts are completely interchangeable as a set.

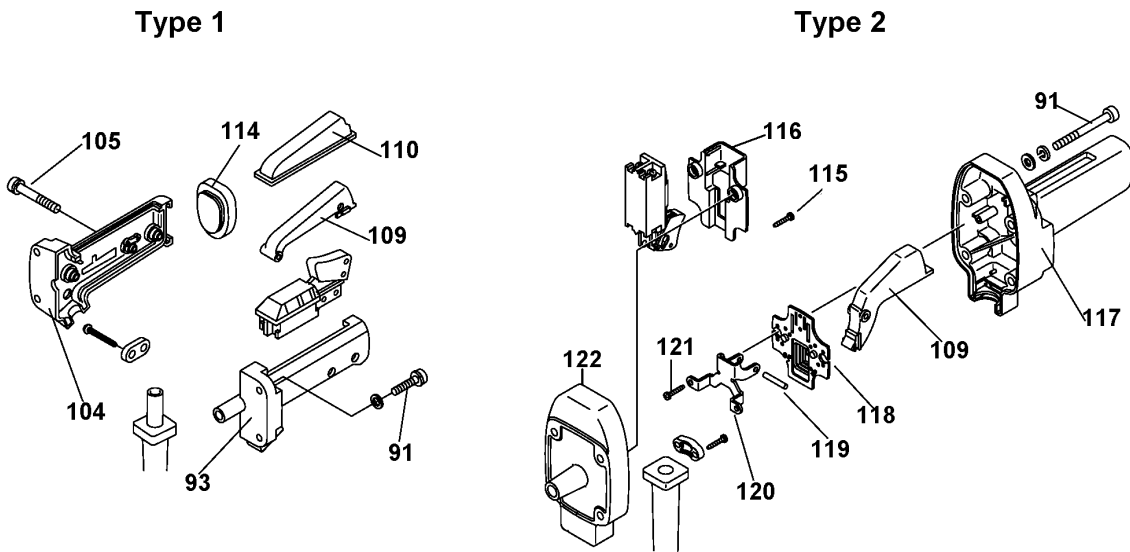
3. Change of Tool Retainer and Tool Retainer Shaft.



| Item No. | Description | Type 1 | Type 2 |
|----------|---------------------|----------|-----------------|
| 78 | Tool Retainer | 322478-0 | 324236-0 |
| 79 | Tool Retainer Shaft | 322550-8 | 324238-6 |
| | Serial No. | ~ 22458E | 22459E ~ |

Above parts are completely interchangeable as a set.

3. Change on Handle etc.



| Item No. | Description | Type 1 | Type 2 |
|----------|----------------------|-----------------------|-------------------------|
| 91 | Hex Socket Head Bolt | 922341-3 (M6X25) | 922381-1 (M6X60) |
| 93 | Handle Set | 182553-2 | ----- |
| 104 | | | ----- |
| 105 | P.H. Screw M5X28 | 911248-8 | ----- |
| 109 | Switch Lever | 414046-4 | 418332-5 |
| 110 | Dust Cover | 421330-0 | ----- |
| 114 | Cushion Rubber | 421484-3 | ----- |
| 115 | Tapping Screw 4X18 | ----- | 265995-6 (2pcs) |
| 116 | Switch Cover | ----- | 418331-7 |
| 117 | Handle | ----- | 418333-3 |
| 118 | Dust Plate | ----- | 421850-4 |
| 119 | Pin 4 | ----- | 256206-0 |
| 120 | Support | ----- | 345355-9 |
| 121 | Tapping Screw 4X18 | ----- | 265995-6 (2pcs) |
| 122 | Handle Sub Base | ----- | 418334-1 |
| | Serial No. | ~ Mar 2003 Production | April 2003 Production ~ |

Above parts are completely interchangeable as a set.