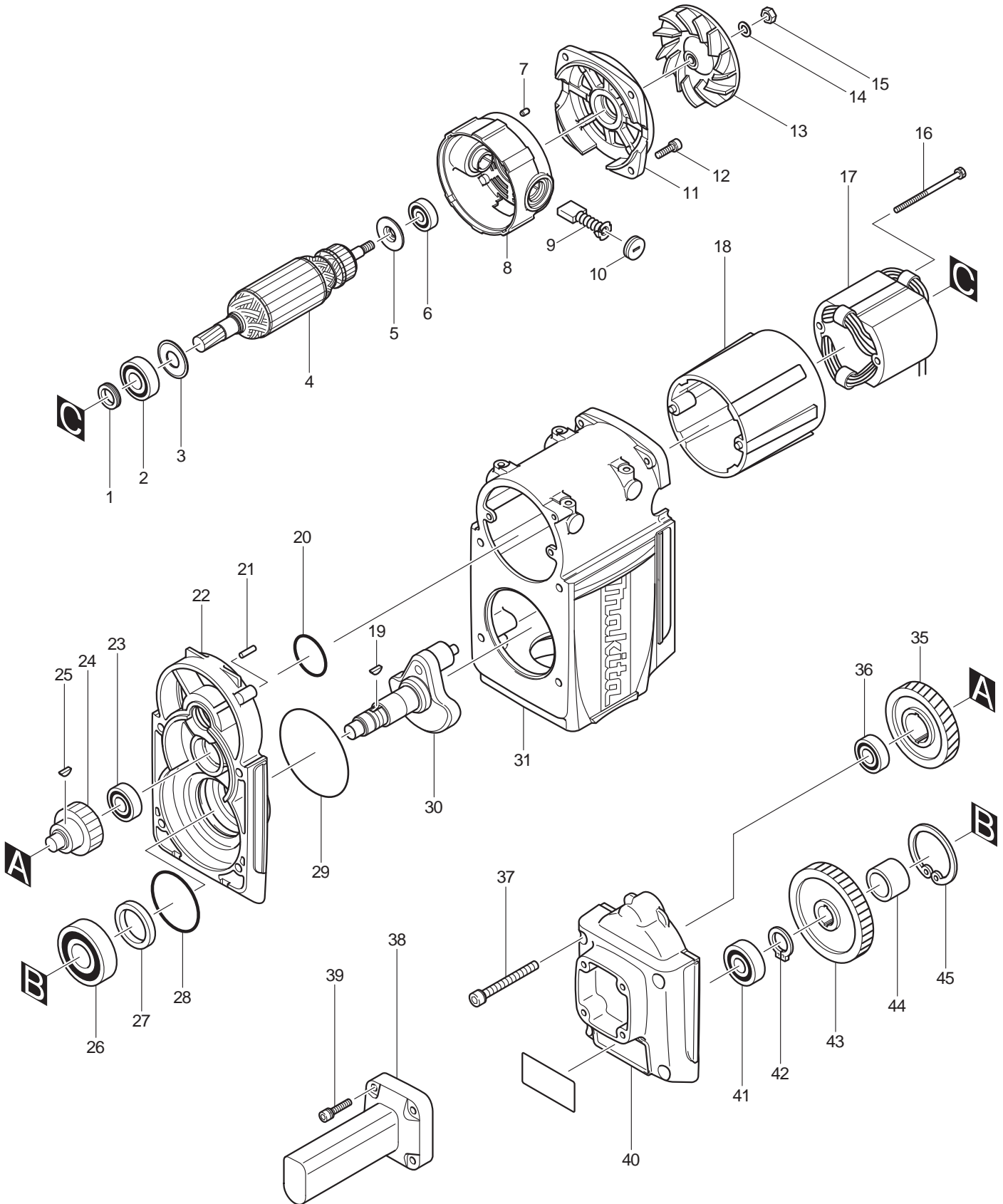


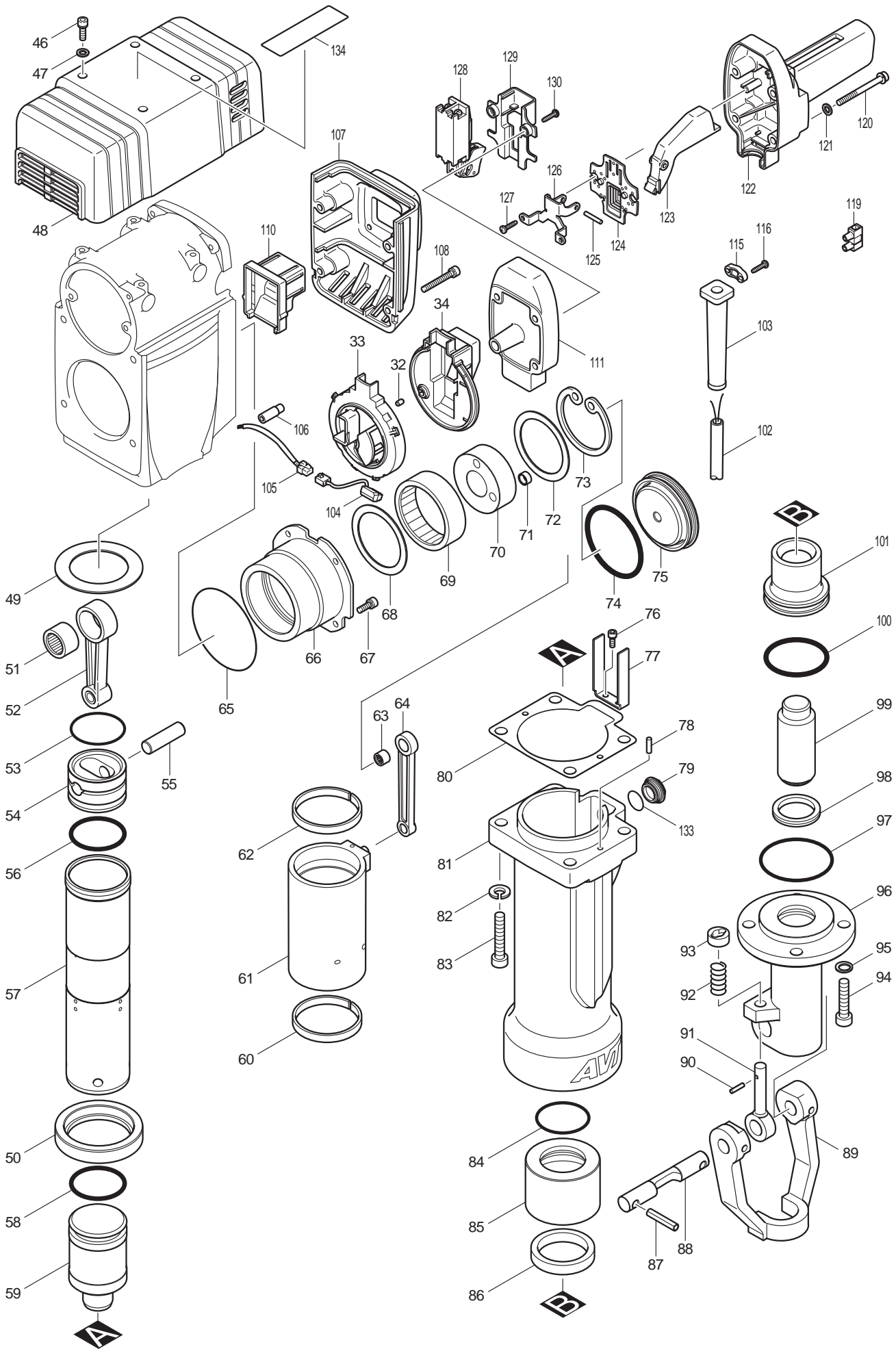


07 - 2009

HM1810

1-1/8" HEX ELECTRIC BREAKER





## **SERVEICE CHANGES**

### **1. Changes on Crank Housing**

<b>Item No.</b>	<b>Description</b>	<b>Type 1</b>	<b>Type 2</b>
31	Crank Housing	317903-4 (N/L/A)	318027-9
66	Crank Box	317900-0 (N/L/A)	318028-7

*\*Above parts are interchangeable as a set.*

### **2. Changes on Cap and Crank Housing Cap**

34	Cap Cover	418953-3 (N/L/A)	419263-1
33	Crank Housing Cap	418955-9 (N/L/A)	419262-3
135	Tapping Screw M4x18	-----	265995-6

*\*Above parts are interchangeable as a set.*

### **3. Changes on Connecting Rod, etc.**

<b>Item No.</b>	<b>Description</b>	<b>Type 1</b>	<b>Type 2</b>
64	Connecting Rod	324535-0	154946-3
63	Needle Roller Bearing	212075-9	-----
71	Ring 10 / Spacer	257267-3 (Ring 10)	331718-5 (Spacer)

*\*Above parts are interchangeable as a set.*

### **4. Changes on Barrel Complete, etc.**

<b>Item No.</b>	<b>Description</b>	<b>Type 1</b>	<b>Type 2</b>	<b>Type 3</b>
76	H.S.H Bolt M5x16	-----	265908-7	266464-0
81	Barrel / Barrel Com.	317905-0 (N/L/A)	154692-8	158861-3

*\*Above parts are interchangeable as a set.*

### **5. Changes on Cap, etc.**

<b>Item No.</b>	<b>Description</b>	<b>Type 1</b>	<b>Type 2</b>
79	Cap	324606-3	450347-6
133	O Ring 22	213373-4 (Size 22)	213953-6 (Size 24)

*\*Above parts are interchangeable as a set.*